



# RAPID 3

TL-LD630

## Manual / Manuel



066610710 V1

### Run time

- Rapid / Rapide  
Up to 20h
- Flash  
Up to 80h
- Constant  
Up to 3h

### Battery Installation / Installation des piles

Power Mark  
Indicateur  
d'allumage

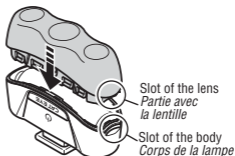
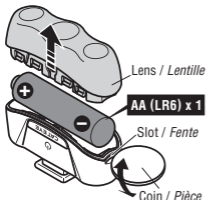
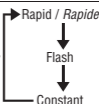


### On/off switch

Long press:  
Longue pression: **ON / OFF**

Short press:  
Switch the lighting mode

Pression courte:  
Sélection des différents modes d'éclairage



Close the lens with the slot facing to the body slot.  
Refermez la lampe en mettant les 2 parties en face.

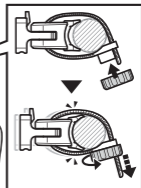
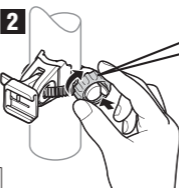
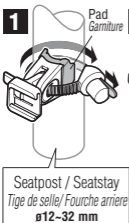
### Caution

- \* Carefully install batteries, insuring proper polarity.
- \* For best performance, do not mix new and old batteries.
- \* Please be sure to securely attach the light to your bicycle.
- \* Do not shine this light directly into eyes.
- \* The battery life will vary depending on the conditions of use.

### Attention

- \* Respectez la polarité des piles.
- \* Evitez de mélanger nouvelles et anciennes piles.
- \* S'assurer de bien attacher la lumière au vélo.
- \* Ne regardez pas cette lampe directement dans les yeux.
- \* La durée de vie de la pile varie en fonction des conditions d'utilisation.

### Mounting & removing the light to from bracket / Montage et dépose de la lampe

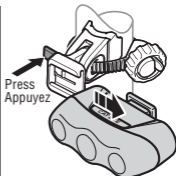
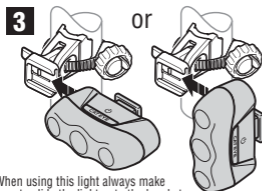


Seatpost / Seatstay  
Tige de selle/ Fourche arriere  
ø12-32 mm



When cutting off the protruding part of the bracket band, rounding the edges to prevent injury.

Lorsque vous découpez les parties saillantes du ruban du support, arrondissez les angles pour éviter les blessures.



When using this light always make sure to slide the light onto the bracket completely (until it "clicks" into place).  
Lorsque vous utilisez cet éclairage assurez vous de bien introduire l'éclairage dans son support (jusqu'à entendre un "clic")

To remove the light, press the lever and slide it off.  
Pour enlever la lampe, appuyez sur le levier et faite la glisser.

### Spare Accessories / Accessoire de Montage

#534-2280 (SP-11)  
FlexTight™ bracket  
Collier FlexTight™



\*OPTION  
#544-0900N  
Clip  
Attache



\*OPTION  
#544-5620  
Rear rack bracket  
Fixation porte-bagages

