



ENG

TL-LD620G

RAPIDmicro

K 1318

Manual



Before using the light, read this manual thoroughly and keep it for future reference.

Design Pat. Pending
Copyright © 2016 CATEYE Co., Ltd.
TLLD620G-161011 3



⚠ PRECAUTIONS ON USE

- Check periodically to ensure that the light unit is attached securely.
Do not use a damaged rubber band.
- Before your trip, please make sure the light is firmly mounted to the bracket, it lights up, and the light is not blocked by baggage, etc.
- Do not place it within children's reach.
- Charging, discharging, and storing in high temperatures will cause the rechargeable battery to deteriorate faster. Do not place the light inside a vehicle or near a heater.
- This product is water-resistant under normal daily use and can be used in the rain. However, do not intentionally submerge it in water.
- If the light unit or parts become dirty with mud, etc., clean with a soft cloth which is moistened with mild soap.
Never apply paint thinner, benzene or alcohol; damage will result.

⚠ PRECAUTIONS ON CHARGING

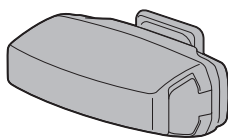
- We recommend using 500+mA (USB2.0) USB battery charger.
- Avoid charging in direct sunlight or in a vehicle parked under direct sunlight, and make sure to charge only when the ambient temperature is between 41°F and 104 °F (5 and 40°C).
- Before charging, be sure that no dust or other foreign objects attach to the USB plug.
- Do not subject the light to vibrations while charging.
- When your PC is in sleep state, the unit cannot be charged.
- Once charging is complete, be sure to disconnect the USB plug.
- Charging and lighting times are approximate values, and will vary by environmental and user conditions.
- If the illumination time is significantly reduced even after proper charging, the rechargeable battery may be nearing the end of its service life. Dispose of the battery as described in "PRECAUTIONS ON DISPOSAL".

⚠ STORAGE PRECAUTIONS

Cool and dry storage is recommended. For long period storage, it is important to charge the battery 30 minutes every 6 months.

⚠ PRECAUTIONS ON DISPOSAL

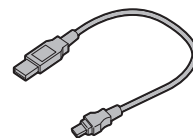
When disposing of the light unit, remove the internal rechargeable battery and dispose of it according to local regulations.



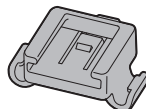
Light unit



Bracket rubber pad



(MICRO USB) USB cable



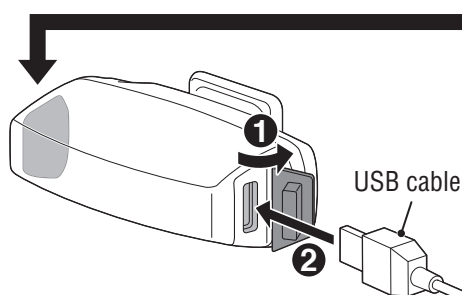
(SP-14-R) Bracket



Rubber band

1 HOW TO CHARGE

⚠ Always charge the product before use.



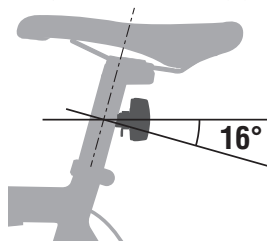
To PC or USB battery charger

Switch (Indicator)

Standard charging time | Approx. **2 h** (USB 2.0)

2 HOW TO MOUNT

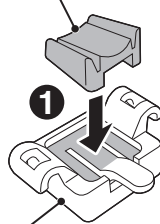
Attach securely in the mounting position.



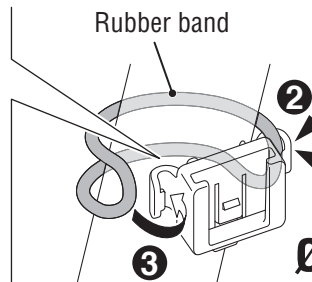
- * The light can be used even when mounted upside down or flipped horizontally.
- * Mount the light at least 250 mm above the ground.

Bracket rubber pad

Rubber band

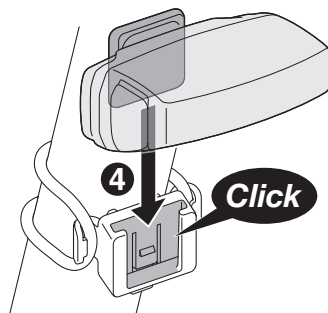


Bracket

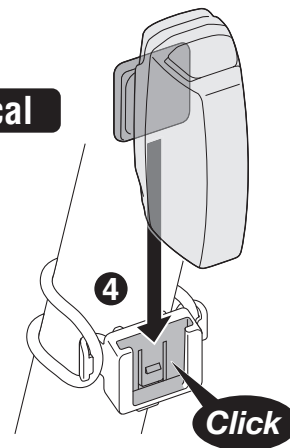


Ø21.5 – 32 mm

Horizontal



Vertical



3 SWITCH OPERATION

Switch (Indicator)

OFF ↔ ON
Press and hold

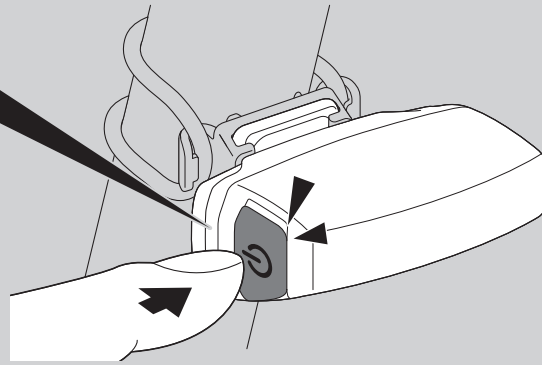
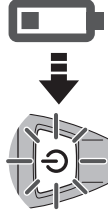
Constant

Approx. **5 h**

When the remaining battery power is low, the lighting mode switch turns on. Charge the light as soon as possible.

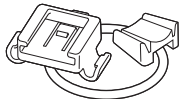
⚠ **Caution:**

- The light must not be covered.
- If any of LEDs is broken, stop use of the light.



INCLUDED

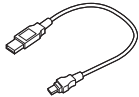
5342450



(SP-14-R)

Bracket

5342730



(MICRO USB)

USB cable

SPECIFICATIONS

Battery	: Rechargeable lithium-ion battery (320 mAh)
Temperature range	: 14°F – 104°F (-10°C – 40°C)
Recharge/discharge number of times	: About 300 times (until the rated capacity drops to 70%)
Dimensions/weight	: 2-3/64" x 25/32" x 1-17/64" (52 x 20 x 32 mm) / 0.74 oz (21 g)

* The specifications and design are subject to change without notice.

LIMITED WARRANTY

2-year Warranty: Light unit only (excludes battery deterioration)

CatEye products are warranted to be free of defects from materials and workmanship for a period of 2 years from original purchase. If the product fails to work during normal use, CatEye will repair or replace the defect at no charge. Service must be performed by CatEye or an authorized retailer. To return the product, pack it carefully and enclose the warranty certificate (proof of purchase) with instruction for repair. Please write or type your name and address clearly on the warranty certificate. Insurance, handling and transportation charges to CatEye shall be borne by person desiring service.

For UK and REPUBLIC OF IRELAND consumers, please return to the place of purchase. This does not affect your statutory rights.

Please register your CatEye product on the website.
<http://www.cateye.com/en/support/regist/>

CATEYE CO., LTD.

2-8-25, Kuwazu, Higashi Sumiyoshi-ku, Osaka 546-0041 Japan

Attn : CATEYE Customer Service Section

Phone : (06)6719-6863

Fax : (06)6719-6033

E-mail : support@cateye.co.jp

URL : <http://www.cateye.com>