



SYNC WEARABLE™

CatEyeSYNC™ Compatible
Rechargeable Safety Light

SL-NW100 Manual

Information in the instruction manual is subject to change without notice.

SLNW100-191010 3

Introduction



How to Charge



How to Mount



Switch Operation



Firmware Update



**Frequently Asked
Questions**



Appendix





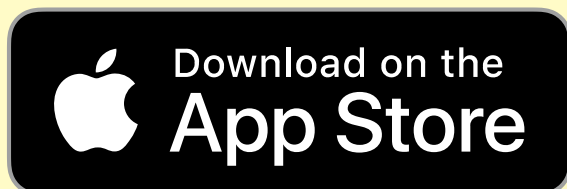
Install CatEyeSYNC™

SYNCWearable™ is capable of the following when used with the CatEyeSYNC™ smartphone app.

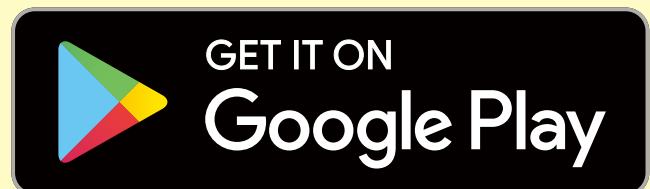
- **Synchronize on/off operations with other CatEyeSYNC™-compatible lights**
- **Synchronize modes and flashing timing with other CatEyeSYNC™-compatible lights***
- **Synchronize Kinetic mode operation (when connected to compatible models)**
- **Configure light settings, check remaining battery level, and receive notifications via the app**

* Excluding headlights

If using an iPhone

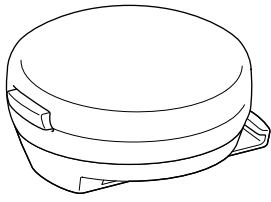


If using an Android smartphone

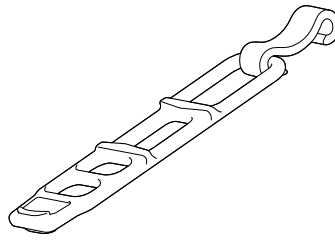


- * Downloading and using the app incurs communication fees. A Wi-Fi connection is recommended.
- * For the latest information on compatible smartphones, see [“CatEyeSYNC™ Compatible Devices”](#).
- * This manual describes how to perform operations using the light only. For information on operations using CatEyeSYNC™, refer to the [“CatEyeSYNC™ instruction manual”](#).
- * Pairing with CatEyeSYNC™ is required to synchronize the lights.

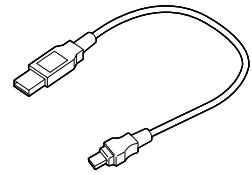
Checking package contents



Light unit
+ Clip bracket



Rubber band and hook



USB cable
(MICRO USB)

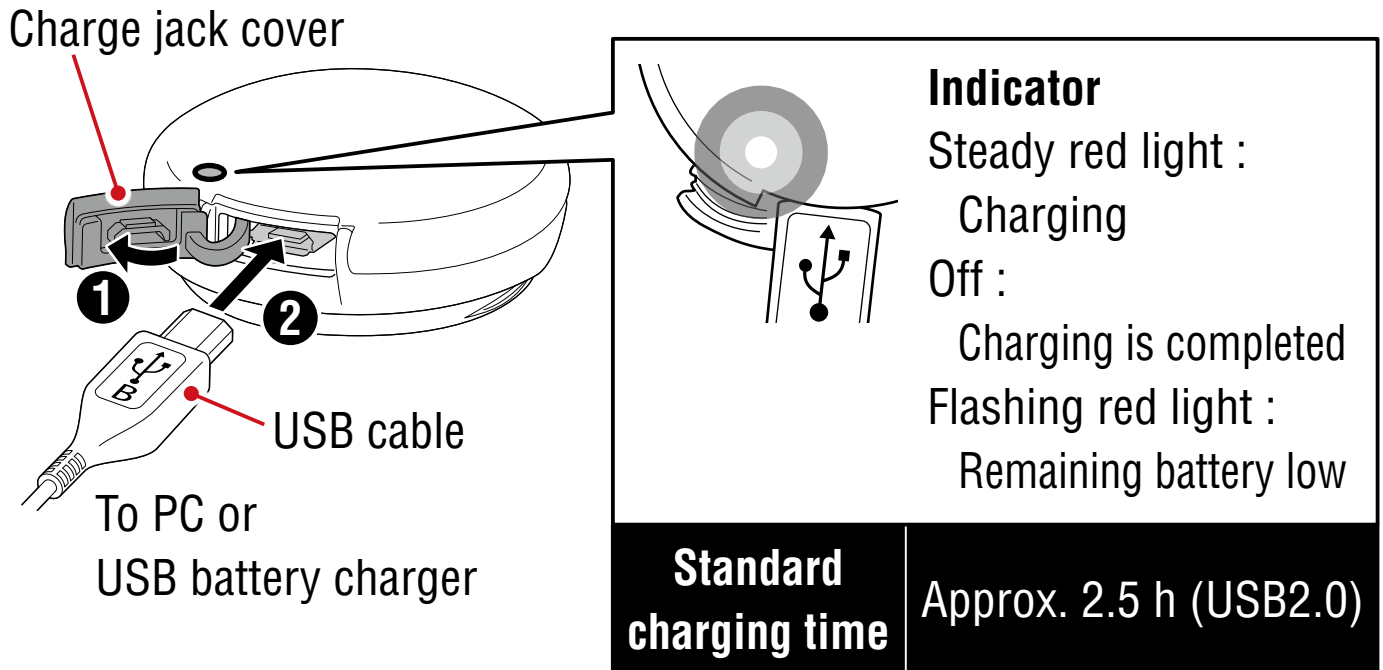
⚠ Before Initial Use

This unit is shipped with small charge to check the light. Be sure to charge it before use, according to the instructions [“How to Charge” \(Page 3\)](#) and [“Cautions on recharging” \(Page 11\)](#).

How to Charge

- 1. Connect the light unit to your PC or a commercial USB battery charger using the USB cable.**

The indicator turns on and charging starts.



- * When your PC is in sleep state, the unit cannot be charged.
- * Use a USB battery charger of 500mAh (USB2.0) or more. The cartridge can be fast-charged with high capacity USB battery charger.

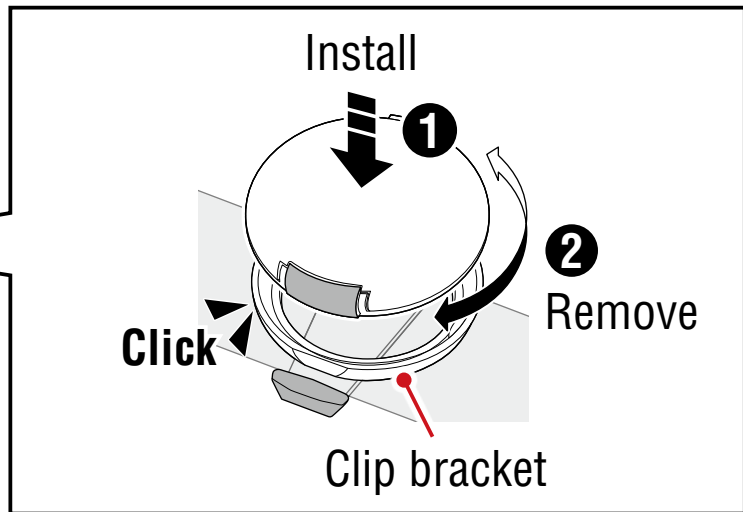
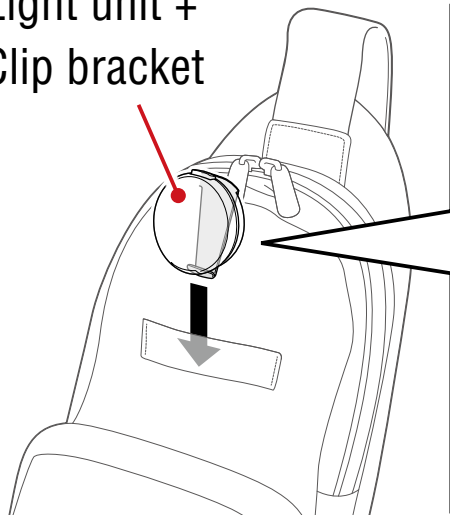
2. Once charging is complete, be sure to disconnect the USB plug.

- * Charging time is approximate values, and will vary depending on the environmental and usage conditions.

How to Mount

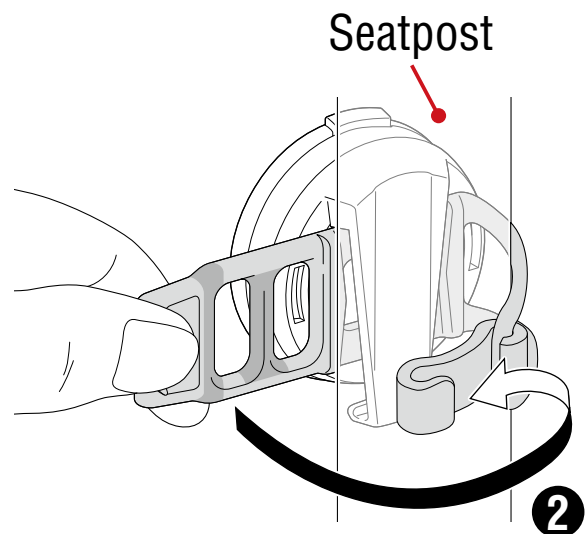
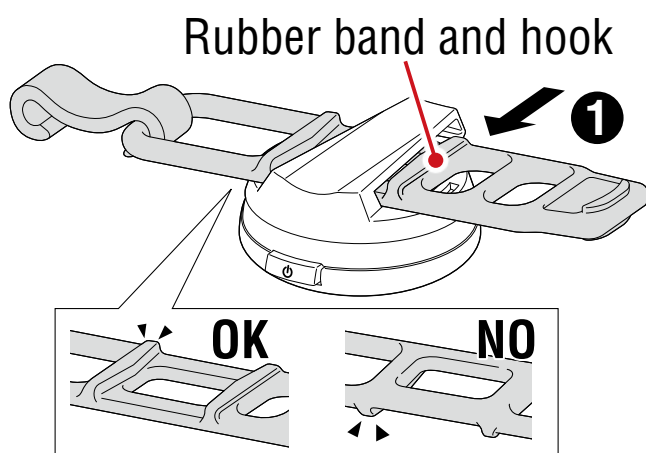
How to attach to a backpack or jersey pocket

Light unit +
Clip bracket



- 1. Confirm the jack cover of the light unit facing the clip bracket tab, and snap the unit on the bracket.**
- 2. Remove the unit from the bracket by turning the unit to the left or right.**

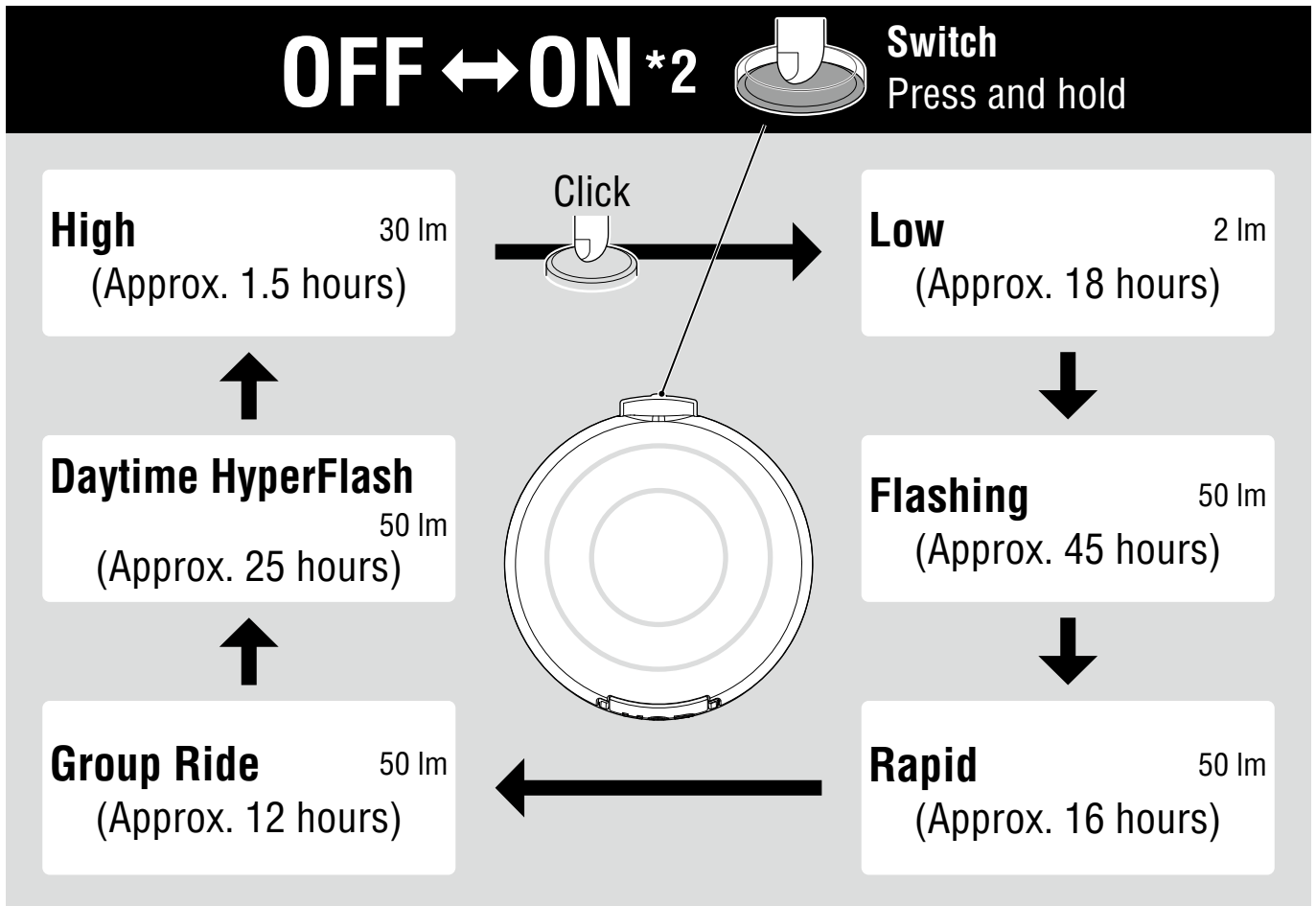
How to mount to a bicycle



Mountable diameter range:
Approx. $\varnothing 22 - \varnothing 32$ mm

Switch Operation

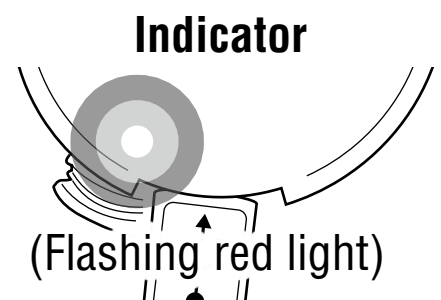
Press the switch to turn the light on/off or to select the mode.



*2 When turning the light on, it lights up in the mode that was used last time. (Mode memory function)

Battery auto-save function

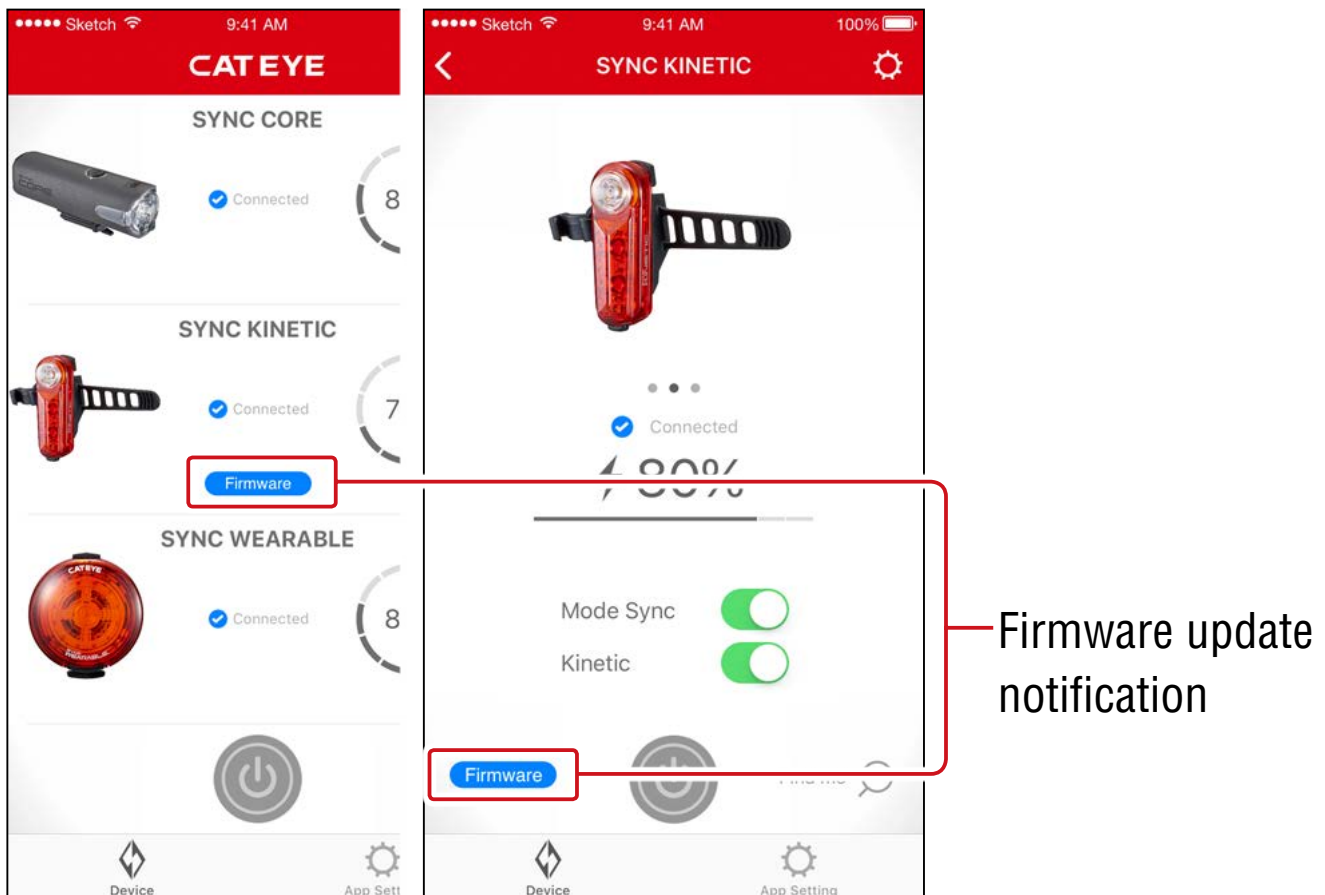
When the remaining battery power is low, the lighting mode changes to slow flashing. Charge the light as soon as possible.



Firmware Update

Update Notifications

When a new firmware version is available, CatEyeSYNC™ will show a notification.



Installing and Executing Firmware Updater for CatEyeSYNC™

To update the firmware, install Firmware Updater for CatEyeSYNC™ on your PC.

* The PC must be connected to the Internet.

**Operating environment : Windows 7 / 8 / 8.1 / 10, or
Mac OS 10.10 or later**

3. [Download the updater](#) from the **CATEYE website.**

Download location

Home page

> SUPPORT

> Downloads

> Software and App

> Firmware Updater for CatEyeSYNC™

4. **Download the Firmware Updater for CatEyeSYNC™ that matches your OS.**

After download is complete, follow the on-screen instructions to install.

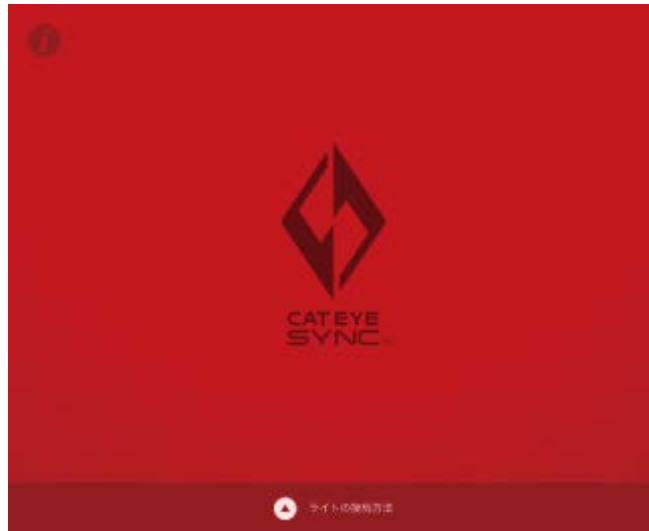
Executing Firmware Updater for CatEyeSYNC™

* The PC must be connected to the Internet.

1. Fully charge the light being used.

Important : Please make sure the light is fully charged before updating the firmware.

2. Start Firmware Updater for CatEyeSYNC™.



3. Follow the on-screen instructions to connect the light to a PC and update the firmware.

- Important :**
- **Be sure to use the included USB cable when connecting a light to a PC.**
 - **Do not simultaneously connect any other lights.**
 - **Do not power off the PC or disconnect the light while updating. Doing so may damage the light.**

Click [Update] button to begin updating. Wait until a dialog appears with the message [Updating complete].

4. After the update is complete, disconnect the light.

After updated, the light will enter a sleep state.

Click the switch on the light to wake the light.

- * For information on operations using CatEyeSYNC™, refer to the [“CatEyeSYNC™ instruction manual”](#).

Frequently Asked Questions

The firmware update does not finish, or an alert is displayed.

Try updating the firmware again from the beginning.

- * Please make sure the light is fully charged before updating the firmware.
- * Be sure to use the included USB cable when connecting a light to a PC.
- * Do not simultaneously connect any other lights.

Appendix

Warning!!!

- Check periodically to ensure that the light unit is attached securely. Do not use a damaged rubber band.
- Always attention to the remaining battery power by checking the indicator periodically while using.

Caution!

- **Stop your bicycle to operate the switch.**
- **Do not place it within children's reach.**
- **This unit is not totally waterproof. Please wipe and dry it completely after using in rain. Otherwise, it may cause failure.**
- **If the light unit or parts become dirty with mud, etc., clean with a soft cloth which is moistened with mild soap. Never apply paint thinner, benzine or alcohol; damage will result.**

Lithium-ion batteries

Cautions on recharging

- **Avoid charging in direct sunlight or in a vehicle parked under direct sunlight, and make sure to charge only when the ambient temperature is between 41°F and 104 °F (5 and 40°C).**
- **Before charging, be sure that no dust or other foreign objects attach to the USB plug.**
- **Do not subject the light to vibrations while charging.**
- **Once charging is complete, be sure to disconnect the USB plug.**

Cautions in use

- **Charging, discharging, and storing in high temperatures will cause the rechargeable battery to deteriorate faster. Do not place the light inside a vehicle or near a heater.**

- **If the illumination time is significantly reduced even after proper charging, the rechargeable battery may be nearing the end of its service life. Dispose of the battery as described in “Cautions for dispose”.**

Cautions on storage

Cool and dry storage is recommended. For long period storage, it is important to charge the battery 30 minutes every 6 months.

Cautions for dispose

When disposing of the light unit, remove the internal rechargeable battery and dispose of it according to local regulations.

Communication

Interference occurs in the following places and/or environments, which may result in incorrect operation.

- **Near TVs, PCs, radios, or motors or in cars or trains.**
- **Near railroad crossings, along railway tracks, around television transmitting stations and radar bases, etc.**
- **Used with other wireless devices or certain battery-powered lights.**

Frequency Band: 2.4 GHz Radiated Power: -4.6 dBm

Hereby, CATEYE Co., Ltd. declares that the radio equipment type SL-NW100 is in compliance with Directive 2014/53/EU. The full text of the EU declaration of conformity is available at the following internet address: cateye.com/doc

This device complies with Industry Canada’s RSS-210. Operation is subject to the condition that this device must not cause harmful interference and must accept any interference, including interference that may cause undesired operation of the device.

Specifications

Battery	Rechargeable lithium-ion polymer battery 300 mAh	
Charge	Micro USB plug	
Operating time	High	: Approx. 1.5 hours
	Low	: Approx. 18 hours
	Flashing	: Approx. 45 hours
	Rapid	: Approx. 16 hours
	Group Ride	: Approx. 12 hours
	Daytime HyperFlash	: Approx. 25 hours
	* Average runtime at 20°C.	
Approximate illumination times based on 60 operations of the Kinetic mode in 1 hour	High	: Approx. 1.4 hours
	Low	: Approx. 6 hours
	Flashing	: Approx. 7 hours
	Rapid	: Approx. 5 hours
	Group Ride	: Approx. 5 hours
	Daytime HyperFlash	: Approx. 6 hours
Standard charging time	Approx. 2.5 hours	
Temperature range	Charging : 41°F – 104°F (5°C – 40°C)	
	Operating : 14°F – 104°F (-10°C – 40°C)	
Recharge/discharge number of times	About 300 times (until the rated capacity drops to 70%)	

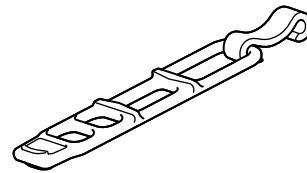
Dimensions/weight	1-51/64" x 1-47/64" x 25/32" (45.5 x 44 x 20 mm) / 0.74 oz (21 g)
-------------------	--

* The specifications and design are subject to change without notice.

Spare / optional parts

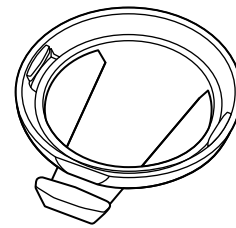
5442620

Rubber band and hook
(WA100)



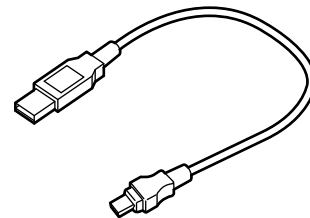
5442610

Clip bracket



5342730

USB cable
(MICRO USB)



Limited warranty

2-year Warranty: Light unit only (excludes battery deterioration)

CatEye products are warranted to be free of defects from materials and workmanship for a period of 2 years from original purchase. If the product fails to work during normal use, CatEye will repair or replace the defect at no charge. Service must be per-

formed by CatEye or an authorized retailer. To return the product, pack it carefully and enclose the warranty certificate (proof of purchase) with instruction for repair. Please write or type your name and address clearly on the warranty certificate. Insurance, handling and transportation charges to CatEye shall be borne by person desiring service.

For UK and REPUBLIC OF IRELAND consumers, please return to the place of purchase. This does not affect your statutory rights.

CATEYE CO., LTD.

2-8-25, Kuwazu, Higashi Sumiyoshi-ku, Osaka 546-0041 Japan

Attn: CATEYE Customer Service

Phone : (06)6719-6863

Fax : (06)6719-6033

E-mail : support@cateye.co.jp URL : <https://www.cateye.com>

[For US Customers]

CATEYE AMERICA, INC.

2825 Wilderness Place Suite 1200, Boulder CO 80301-5494 USA

Phone : 303.443.4595

Toll Free : 800.5.CATEYE

Fax : 303.473.0006

E-mail : service@cateye.com