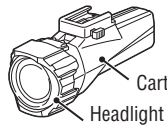




GVOLT100 FEATURES

The GVOLT100 includes a visor to direct the light distribution, allowing the unit to be mounted on the top or bottom of the handlebar. See "Mounting above or below the handlebar" for how to change the mounting position of the headlight and the cartridge battery. The cartridge battery can also be replaced with the optional E-Bike adapter for connection to the E-Bike drive unit. See "USING THE E-BIKE ADAPTER (OPTIONAL)" for more information.

Light unit

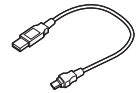


Cartridge battery
Headlight

FlexTight™ bracket (H-34N)



USB cable (MICRO USB)



Before using the light, read this manual thoroughly and keep it for future reference.

⚠ WARNING!!!

- Make sure the illumination angle will not dazzle oncoming traffic, and never position the visor to the bottom of the headlight.
- Before your trip, please make sure the light is firmly mounted to the bracket and it lights up.
- Always attention to the remaining battery power by checking the indicator periodically while using.

⚠ CAUTION!

- Do not place it within children's reach.
- In preparation for unexpected battery shutoff, we recommend you carry a spare cartridge battery and light.
- Do not attach the cartridge battery if water droplets, dust, or other foreign matter is attached to the unit. Also, do not touch the terminals.
- This device is rated IPX4 based on JIS C0920. Do not immerse the device in water. Doing so may cause a malfunction. Wipe off any moisture after using the device in rainy weather.
- If the light unit or parts become dirty with mud, etc., clean with a soft cloth which is moistened with mild soap. Never apply paint thinner, benzine or alcohol; damage will result.

⚠ LITHIUM-ION BATTERIES

Cautions on recharging

- Avoid charging in direct sunlight or in a vehicle parked under direct sunlight, and make sure to charge only when the ambient temperature is between 41°F and 104°F (5 and 40°C).
- Before charging, be sure that no dust or other foreign objects attach to the USB plug.
- Do not subject the light to vibrations while charging.
- Once charging is complete, be sure to disconnect the USB plug.

Cautions in use

- Charging, discharging, and storing in high temperatures will cause the rechargeable battery to deteriorate faster. Do not place the light inside a vehicle or near a heater.
- If the illumination time is significantly reduced even after proper charging, the rechargeable battery may be nearing the end of its service life. Dispose of the battery as described in "Cautions for dispose".

Cautions on storage

Cool and dry storage is recommended. For long period storage, it is important to charge the battery 30 minutes every 6 months.

Cautions for dispose

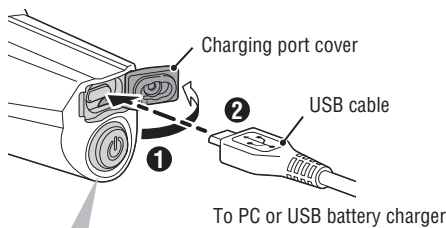
Dispose of used cartridge batteries appropriately according to local regulations.

SPECIFICATIONS

Light source	High-brightness multi-white LED
Battery type	Li-ion 3.6 v - 3400 mAh
Charge	Micro USB plug
Operating time	High : Approx. 1.5 hours
	Middle : Approx. 3 hours
	Low (Eco) : Approx. 15 hours
	* Average runtime at 68°F (20°C).
Standard charging time	Approx. 3.5 hours (1.5 A)
Temperature range	Charging : 41°F - 104°F (5°C - 40°C)
	Operating : 14°F - 104°F (-10°C - 40°C)
Recharge/discharge number of times	About 300 times (until the rated capacity drops to 70%)
Waterproof	IPX4
Dimensions/weight	5" x 2-9/64" x 1-51/64" (127.0 x 54.5 x 45.5 mm) / 64 oz (181.5 g) (Light unit only)

* The specifications and design are subject to change without notice.

1 HOW TO CHARGE



Switch (indicator)	: Charging status
Constant red light	: Charging
Constant orange light	: Approx. 60 - 40 %
Constant green light	: Charging is completed

Standard charging time Approx. **3,5 St (1.5A)**

CAUTION!

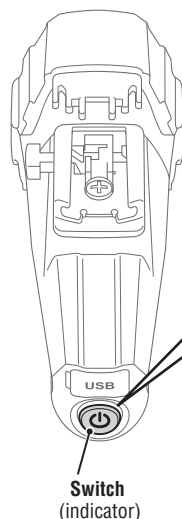
- Always charge the product before use.
- Once charging is completed, securely close the charging port cover.
- Do not remove the cartridge battery while charging or when the light is on.
- Do not press and hold the switch on the cartridge battery if the battery is not mounted to the headlight.

* When your PC is in sleep state, the unit cannot be charged.

* We recommend using 1.5+A USB battery charger.

* Charging and lighting times are approximate values, and will vary by environmental and user conditions.

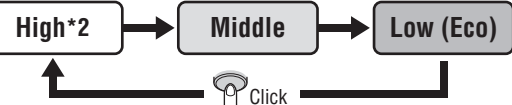
2 SWITCH OPERATION



Switch (indicator)

OFF ← ON*¹ Press and hold

Switching the lighting mode



*¹ When turning the light on, it lights up in the mode that was used last time. (Mode memory function)

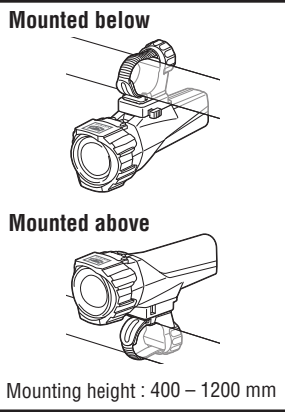
*² If the bicycle is stationary for a certain period of time, brightness is reduced to prevent the temperature from rising.

Remaining battery capacity

The switch (indicator) will flash red if the remaining battery power is low. Charge the product as soon as possible.

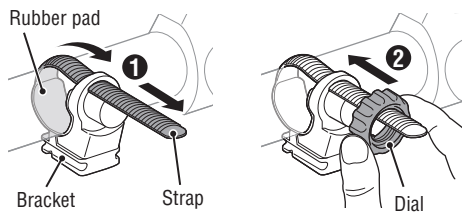
Switch	Remaining battery power
Constant orange light	Approx. 60 to 50 %
Constant red light	Approx. 50 to 30 %
Flashing red light	Less than Approx. 30 %

3 HOW TO MOUNT TO A BICYCLE



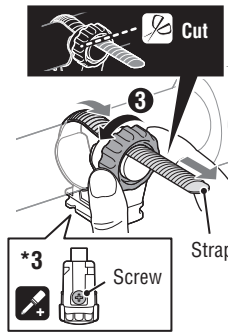
* This section explains how to mount the light unit below the handlebar.

1. Mounting the bracket



Wrap the strap around the handlebar.

Attach the dial.



Securely tighten the dial.

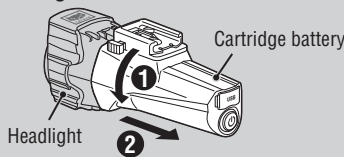
CAUTION!:

- Be sure to tighten the dial by hand. When you tighten it too hard with a tool, the screw thread may be stripped.
- Check the dial and screw (*3) on the bracket periodically, and use them without any loosening.
- Round off the cut edge of the bracket strap to prevent injury.

2. Mounting above or below the handlebar

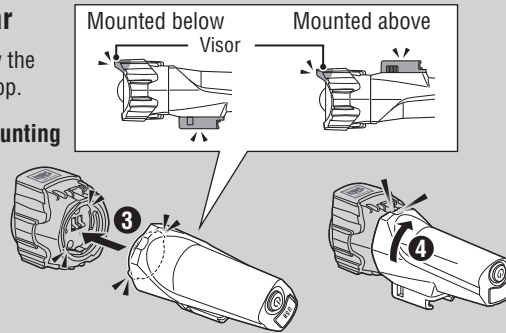
The head unit can be mounted on either above or below the handle by positioning the visor of the head unit to the top.

Removing



Turn the cartridge battery counterclockwise to remove it from the headlight.

Mounting



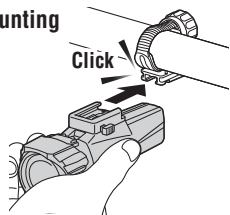
Align the grooves and turn clockwise until the cartridge battery stops.

CAUTION!:

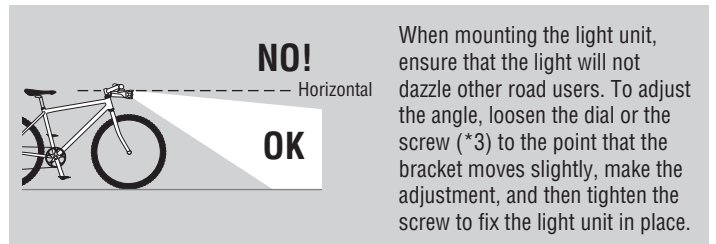
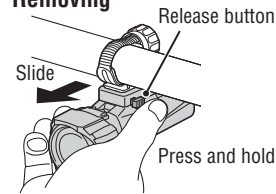
- When attaching or removing the cartridge battery, be sure to hold the headlight to prevent it from dropping and becoming damaged.
- Do not attach the cartridge battery if water droplets, dust, or other foreign matter is attached to the unit, and do not touch the terminals.
- Never position the visor to the bottom of the headlight. Doing so will dazzle oncoming traffic.

3. Attaching/removing the light

Mounting

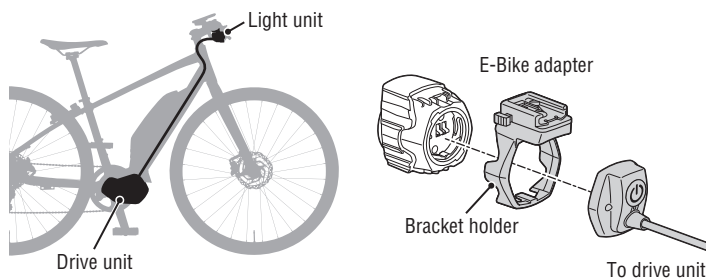


Removing



USING THE E-BIKE ADAPTER (OPTIONAL)

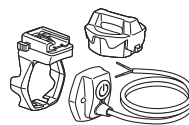
You can use this light with your E-Bike by combining the light module with the optional E-Bike adaptor (sold separately).



SPARE/OPTIONAL PARTS

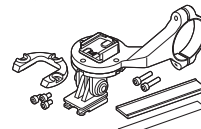
5336920

E-Bike adapter
(Min 5.5V-Max 14.5V)



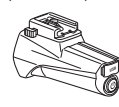
1604110

Out-front bracket 2
(OF-200)



5336840

Cartridge battery
(BA-3.4DS)



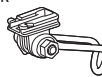
5338827N

FlexTight™ bracket
(H-34N)



5342440

Center fork bracket
(CFB-100)



5445340

GP bracket



5336860

Protective cover



5342730

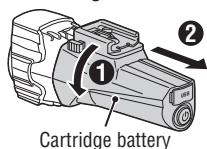
USB cable
(MICRO USB)



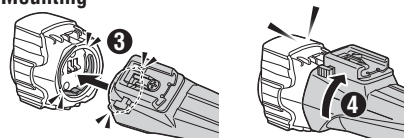
HOW TO REPLACE THE CARTRIDGE BATTERY

Follow the procedure below to attach or remove the cartridge battery.

Removing



Mounting



CAUTION!:

Be sure to hold the headlight to make sure the cartridge battery is securely attached or removed.

LIMITED WARRANTY

2-year Warranty: Light unit only (excludes battery deterioration)

CatEye products are warranted to be free of defects from materials and workmanship for a period of 2 years from original purchase. If the product fails to work during normal use, CatEye will repair or replace the defect at no charge. Service must be performed by CatEye or an authorized retailer. To return the product, pack it carefully and enclose the warranty certificate (proof of purchase) with instruction for repair. Please write or type your name and address clearly on the warranty certificate. Insurance, handling and transportation charges to CatEye shall be borne by person desiring service.

CAT EYE CO., LTD.

2-8-25, Kuwazu, Higashi Sumiyoshi-ku, Osaka 546-0041 Japan

Attn: CATEYE Customer Service Section

Phone : (06)6719-6863

Fax : (06)6719-6033

E-mail : support@cateye.co.jp

URL : <https://www.cateye.com>