



# RECHARGEABLE HEADLIGHT

ENG

# G VOLT50™

HL-EL550G RC

Manual

K 1190



Before using the light, please read this manual and the included separate sheet "LITHIUM-ION / LITHIUM-ION POLYMER BATTERIES" thoroughly, and keep them for future reference.

Design Pat. Pending  
Copyright© 2016 CATEYE Co., Ltd.  
HLEL550GRC-160614 3



## ⚠ PRECAUTIONS ON USE

- Before your trip, please make sure the light is firmly mounted to the bracket, it lights up, and the light is not blocked by baggage, etc.
- Do not place it within children's reach.
- Mounting the light unit too close to a wireless computer may adversely affect the reading of the computer.
- In preparation for unexpected battery shutoff, we recommend you carry a spare light.
- This product is water-resistant under normal daily use and can be used in the rain. However, do not intentionally submerge it in water.

- If the light unit or parts become dirty with mud, etc., clean with a soft cloth which is moistened with mild soap. Never apply paint thinner, benzene or alcohol; damage will result.

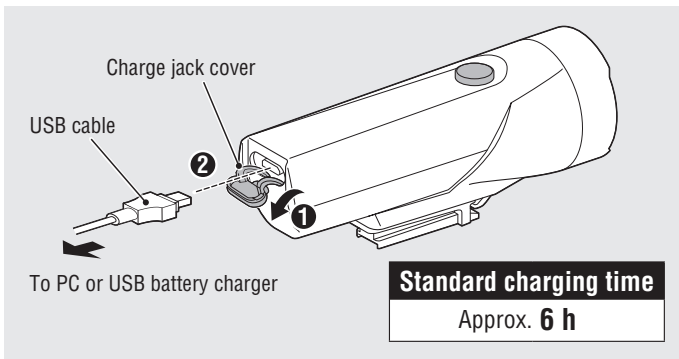
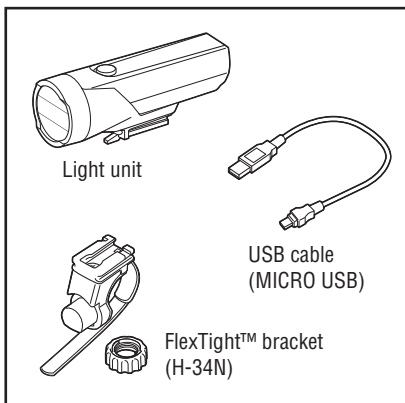
## ⚠ PRECAUTIONS ON DISPOSAL

When disposing of the light unit, remove the internal rechargeable battery and dispose of it according to local regulations.

### ❗ Before Initial Use

This unit is shipped with a small charge to check the light. Be sure to charge it before use, according to the instructions "HOW TO CHARGE".

## 1 HOW TO CHARGE



1. Connect the light unit to your PC or a commercial USB battery charger using the USB cable. (1 - 2). The switch indicator turns on and charging starts.

Indicator light	State
On	Charging
Off	Charging is completed

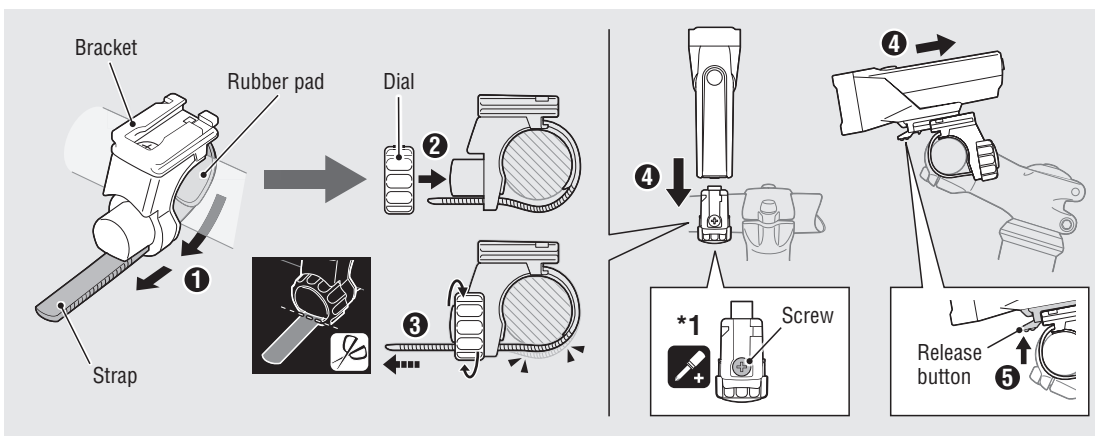
- \* When your PC is in sleep state, the unit cannot be charged.

- \* We recommend using 500+mAh (USB 2.0) USB battery charger.
- \* If the indicator flashes rapidly, there is a charging error. Remove the cable and try again.

2. After charging is completed, remove the USB cable, and install the charge jack cover.

- \* Charging and lighting times are approximate values, and will vary by environmental and user conditions.

## 2 HOW TO MOUNT TO A BICYCLE



1. Mount the bracket to the handlebar. (1 - 3)
  2. Insert the light unit into the bracket until it clicks, and adjust the beam angle. (4)
  3. To remove the light unit, pull out it forward while pressing down on the release button (5).
- \* To re-adjust the beam angle, loosen the dial enough to move the bracket, and firmly tighten it after adjustment.
  - \* The light can be mounted under the handlebar.

### CAUTION!:

- Be sure to tighten the dial by hand. When you tighten it too hard with a tool, the screw thread may be stripped.
- Check the dial and screw (\*1) on the bracket periodically, and use them without any loosening.
- Round off the cut edge of the bracket strap to prevent injury.

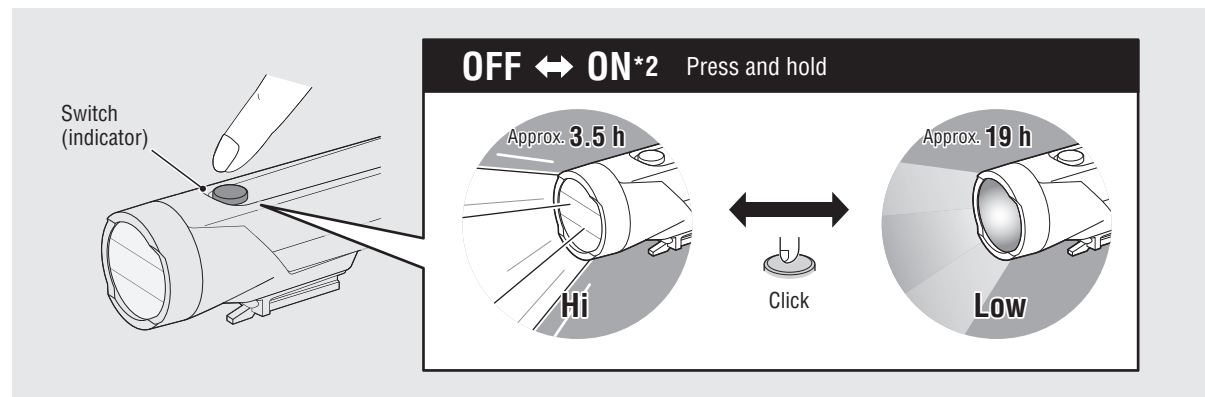
### 3 SWITCH OPERATION (SWITCHING THE LIGHTING MODE)

The ON/OFF and lighting modes are selected using a switch.

\*2 When you turn the light on, etc., it lights up in the last lighting mode used. (Mode memory function)

#### Remaining battery capacity

When the switch (indicator) lights up, the remaining battery power is 20% or less. Please charge as soon as possible.



### SPECIFICATIONS

Light source	High-intensity LED x 1
Battery	Li-ion 3.6v 2200 mAh
Charge	Micro USB plug
Operating time	Hi : Approx. 3.5 hours
	Low : Approx. 19 hours * Average runtime at 20°C.
Standard charging time	Approx. 6 hours
Temperature range	Charging : 41°F – 104°F (5°C – 40°C)
	Operating : 14°F – 104°F (-10°C – 40°C)
Recharge/discharge number of times	About 300 times (until the rated capacity drops to 70%)
Dimensions/weight	1-27/64" x 4-11/64" x 1-47/64" (36 x 106 x 44 mm) / 3.25 oz (92 g)

\* The specifications and design are subject to change without notice.

### LIMITED WARRANTY

#### 2-year Warranty: Light unit only (excludes battery deterioration)

CatEye products are warranted to be free of defects from materials and workmanship for a period of 2 years from original purchase. If the product fails to work during normal use, CatEye will repair or replace the defect at no charge. Service must be performed by CatEye or an authorized retailer. To return the product, pack it carefully and enclose the warranty certificate (proof of purchase) with instruction for repair. Please write or type your name and address clearly on the warranty certificate. Insurance, handling and transportation charges to CatEye shall be borne by person desiring service.

For UK and REPUBLIC OF IRELAND consumers, please return to the place of purchase.

This does not affect your statutory rights.

Please register your CatEye product on the website.

<http://www.cateye.com/en/support/regist/>

#### CATEYE CO., LTD.

2-8-25, Kuwazu, Higashi Sumiyoshi-ku, Osaka 546-0041 Japan

Attn : CATEYE Customer Service Section

Phone : (06)6719-6863

Fax : (06)6719-6033

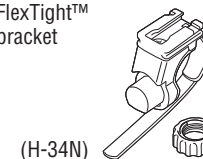
E-mail : support@cateye.co.jp

URL : <http://www.cateye.com>

### SPARE/OPTIONAL PARTS

#### 5338827N

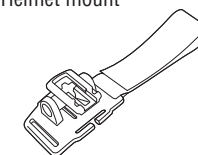
FlexTight™ bracket



(H-34N)

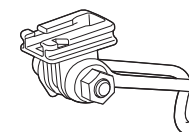
#### 5341831N

Helmet mount



#### 5342440

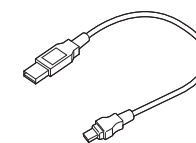
Center fork bracket



(CFB-100)

#### 5342730

USB cable



(MICRO USB)