

ENG



RECHARGEABLE HEADLIGHT
G VOLT 25™

HL-EL360G RC
Manual
K 1189 

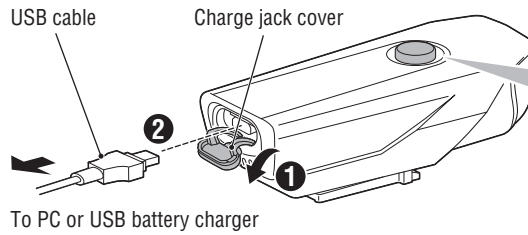
 Before using the light, please read this manual and the included separate sheet "LITHIUM-ION / LITHIUM-ION POLYMER BATTERIES" thoroughly, and keep them for future reference.

Design Pat. Pending
Copyright © 2016 CATEYE Co., Ltd.
HLEL360GRC-160614 4

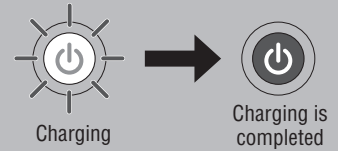



1 HOW TO CHARGE

 Always charge the product before use.

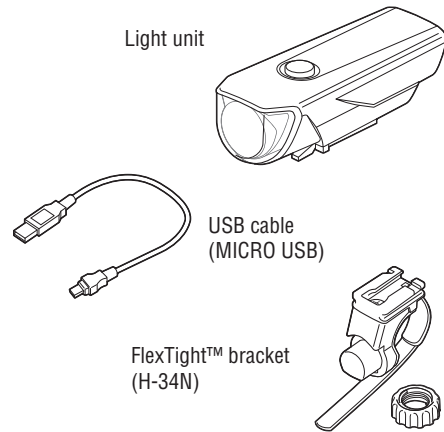


Switch (Indicator)

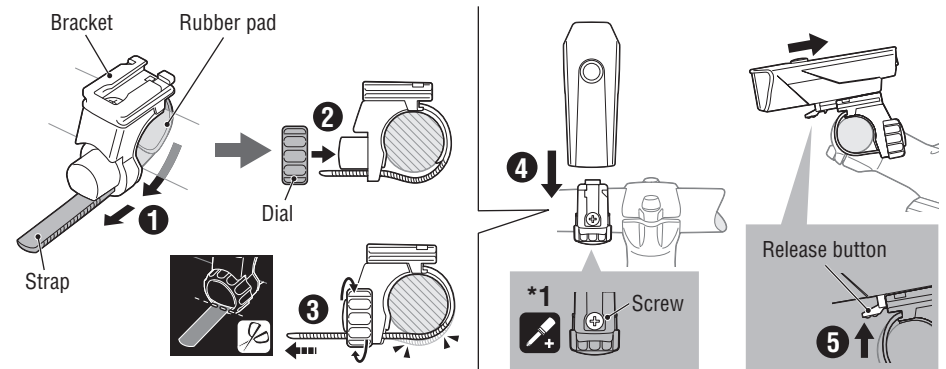


Standard charging time Approx. **3h**
(USB 2.0)

* If the indicator flashes, there is a charging error.
Remove the cable and try again.



2 HOW TO MOUNT TO A BICYCLE



*1 Check the dial and screw on the bracket periodically, and use them without any loosening.

PRECAUTIONS ON USE

- Before your trip, please make sure the light is firmly mounted to the bracket, it lights up, and the light is not blocked by baggage, etc.
- Do not place it within children's reach.
- Mounting the light unit too close to a wireless computer may adversely affect the reading of the computer.
- In preparation for unexpected battery shutoff, we recommend you carry a spare light.
- This product is water-resistant under normal daily use and can be used in the rain. However, do not intentionally submerge it in water.
- If the light unit or parts become dirty with mud, etc., clean with a soft cloth which is moistened with mild soap. Never apply paint thinner, benzene or alcohol; damage will result.

PRECAUTIONS ON CHARGING

- We recommend using 500-mA (USB2.0) USB battery charger.
- When your PC is in sleep state, the unit cannot be charged.
- Charging and lighting times are approximate values, and will vary by environmental and user conditions.

PRECAUTIONS WHEN MOUNTING

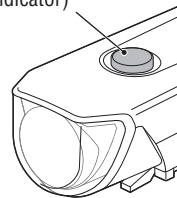
- Be sure to tighten the dial by hand. When you tighten it too hard with a tool, the screw thread may be stripped.
- Round off the cut edge of the bracket strap to prevent injury.
- To re-adjust the beam angle, loosen the dial enough to move the bracket, and firmly tighten it after adjustment.

PRECAUTIONS ON DISPOSAL

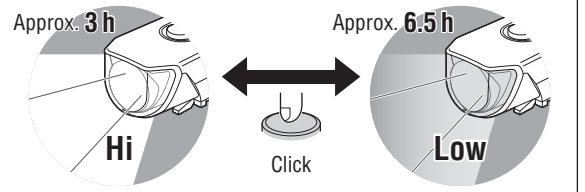
When disposing of the light unit, remove the internal rechargeable battery and dispose of it according to local regulations.

3 SWITCH OPERATION

Switch (Indicator)



OFF ↔ ON *2 Press and hold



*2 When you turn the light on, it lights up in the last lighting mode you used. (Mode memory function)

* When the switch (indicator) lights up, the remaining battery power is 20% or less. Please charge as soon as possible.

SPARE/OPTIONAL PARTS

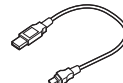
5338827N

FlexTight™ bracket (H-34N)



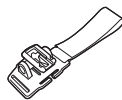
5342730

USB cable (MICRO USB)



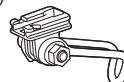
5341831N

Helmet mount



5342440

Center fork bracket (CFB-100)



SPECIFICATIONS

Battery : Li-ion 3.7V 800mAh
Temperature range : 14°F – 104°F (-10°C – 40°C)
Recharge/discharge number of times

: About 300 times (until the rated capacity drops to 70%)

Dimensions/weight : 1-27/64" x 3-37/64" x 1-29/64"
(36 x 91 x 37 mm) / 2.26 oz (64 g)

* The specifications and design are subject to change without notice.

LIMITED WARRANTY

2-year Warranty: Light unit only (excludes battery deterioration)

CatEye products are warranted to be free of defects from materials and workmanship for a period of 2 years from original purchase. If the product fails to work during normal use, CatEye will repair or replace the defect at no charge. Service must be performed by CatEye or an authorized retailer. To return the product, pack it carefully and enclose the warranty certificate (proof of purchase) with instruction for repair. Please write or type your name and address clearly on the warranty certificate. Insurance, handling and transportation charges to CatEye shall be borne by person desiring service. For UK and REPUBLIC OF IRELAND consumers, please return to the place of purchase. This does not affect your statutory rights.

Please register your CatEye product on the website.
<http://www.cateye.com/en/support/regist/>

CAT EYE CO., LTD.

2-8-25, Kuwazu, Higashi Sumiyoshi-ku, Osaka 546-0041 Japan
Attn : CATEYE Customer Service Section
Phone : (06)6719-6863
Fax : (06)6719-6033
E-mail : support@cateye.co.jp
URL : <http://www.cateye.com>