



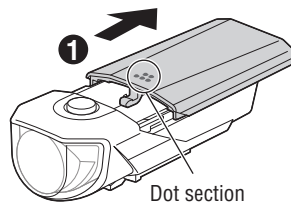
ENG
BATTERY HEADLIGHT
G VOLT 20
HL-EL350G
Manual
K 1187

Before using the product, please thoroughly read this manual and keep it for future reference.

Design Pat. Pending
Copyright © 2018 CATEYE Co., Ltd.
HLEL350G-180423 4

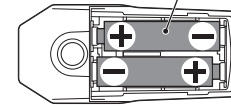


1 HOW TO INSTALL BATTERY

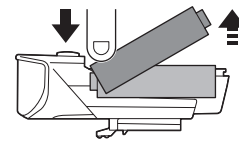


Slide the cover to the back while pressing down on the dot section.

2 AA alkaline battery (x 2)



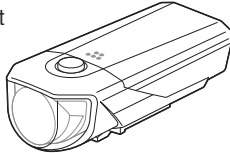
Insert the batteries according to the marks on the case.



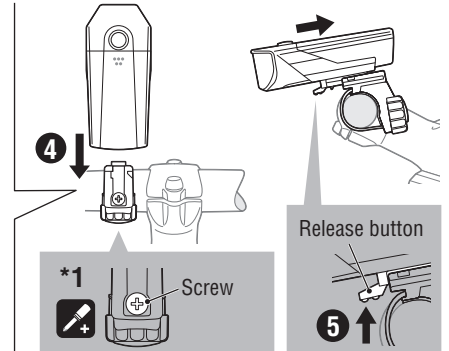
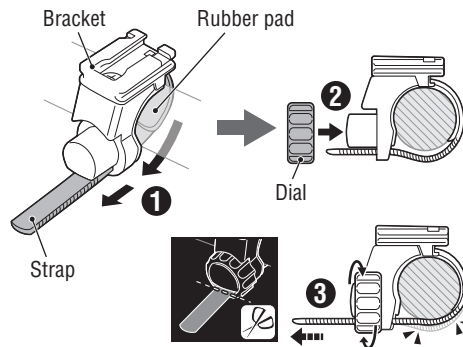
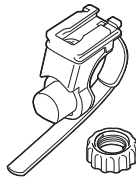
How to remove batteries

2 HOW TO MOUNT TO A BICYCLE

Light unit



FlexTight™ bracket (H-34N)



*1 Check the dial and screw on the bracket periodically, and use them without any loosening.

⚠ PRECAUTIONS ON USE

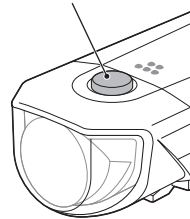
- Before your trip, please make sure the light is firmly mounted to the bracket, it lights up, and the light is not blocked by baggage, etc.
- Do not place it within children's reach.
- Do not use in combination with new and old batteries, or different types of batteries.
- Be sure to install batteries in the correct direction.
- Mounting the light unit too close to a wireless computer may adversely affect the reading of the computer.
- Remove and store batteries when you will not use the light for a long period of time. Otherwise, batteries may leak liquid, which may result in failure.
- This product is water-resistant under normal daily use and can be used in the rain. However, do not intentionally submerge it in water.
- If the light unit or parts become dirty with mud, etc., clean with a soft cloth which is moistened with mild soap. Never apply paint thinner, benzene or alcohol; damage will result.
- The battery life will vary depending on the conditions of use.

⚠ PRECAUTIONS WHEN MOUNTING

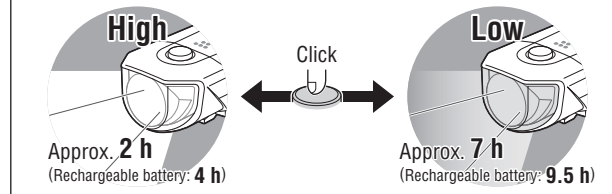
- Be sure to tighten the dial by hand. When you tighten it too hard with a tool, the screw thread may be stripped.
- Round off the cut edge of the bracket strap to prevent injury.
- To re-adjust the beam angle, loosen the dial enough to move the bracket, and firmly tighten it after adjustment.

3 SWITCH OPERATION

Switch (Battery indicator)



OFF ↔ ON *2 Press and hold



*2 When you turn the light on, it lights up in the last lighting mode you used. (Mode memory function)
* When the switch (battery indicator) lights up, the remaining battery level is low. Replace with new batteries.

SPARE/OPTIONAL PARTS

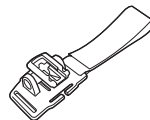
5338827N

FlexTight™ bracket (H-34N)



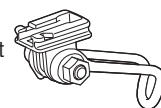
5341831N

Helmet mount



5342440

Center fork bracket (CFB-100)



LIMITED WARRANTY

2-year Warranty: Light unit only

CatEye products are warranted to be free of defects from materials and workmanship for a period of 2 years from original purchase. If the product fails to work during normal use, CatEye will repair or replace the defect at no charge. Service must be performed by CatEye or an authorized retailer. To return the product, pack it carefully and enclose the warranty certificate (proof of purchase) with instruction for repair. Please write or type your name and address clearly on the warranty certificate. Insurance, handling and transportation charges to CatEye shall be borne by person desiring service.

CAT EYE CO., LTD.

2-8-25, Kuwazu, Higashi Sumiyoshi-ku, Osaka 546-0041
Japan

Attn: CATEYE Customer Service Section

Phone: (06)6719-6863

Fax: (06)6719-6033

E-mail: support@cateye.co.jp

URL: http://www.cateye.com

SPECIFICATIONS

Battery : AA alkaline battery x 2
Temperature range : 14°F - 104°F (-10°C - 40°C)
Dimensions/weight : 1-39/64" x 3-37/64" x 1-7/16"
(41 x 91 x 36.5 mm) / 3.21 oz (91 g)

* The specifications and design are subject to change without notice.