



ENG

HL-EL160™

BATTERY HEADLIGHT
Manual

Before using the light, read this manual thoroughly and keep it for future reference. Do not use the light in any way other than as described in this manual.

Design Pat. Pending
Copyright © 2022 CATEYE Co., Ltd.
HLEL160-220608 1.1

⚠ Warning (Risk of serious injury or accident)

- Be sure to direct the light beam downward so approaching car or pedestrian are not dazzled.
- Before your trip, please make sure the light is firmly mounted to the bracket and it lights up.
- Always pay attention to the remaining battery power by checking the indicator periodically while using the light.
- Do not disassemble or modify the light or any of the included items.

⚠ Caution (Risk of injury, malfunction, or damage)

- Due to the variability of LEDs, the color and brightness may differ even between devices with the same model number.
- Do not place it within children's reach.
- Do not stare directly at the light when it is on or flashing.
- When used with a cyclocomputer, attach the headlight as far away from the cyclocomputer as possible, as it may affect measurement.
- This device is rated IPX7 based on JIS C0920. However, do not operate the headlight underwater. Doing so may cause a malfunction.
- If the light unit or parts become dirty with mud, etc., clean with a soft cloth which is moistened with mild soap. Never apply paint thinner, benzene or alcohol; damage will result.
- Dispose of the batteries according to local regulations.

SPECIFICATIONS

Light source	LED x 1
Battery	2 x AA Alkaline batteries
Operating time	Constant : Approx. 30 hours
(Alkaline batteries)	Flashing : Approx. 250 hours
Waterproof	IPX7
Temperature range	14°F - 104°F (-10°C - 40°C)
Dimensions/weight	3-1/2" x 1-1/2" x 1-17/64" (89 x 38 x 32 mm) / 2.93 oz (83 g) (Incl. batteries)

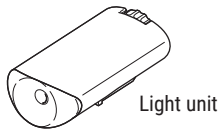
* The specifications and design are subject to change without notice.

LIMITED WARRANTY

2-year Warranty: Light unit only
CatEye products are warranted to be free of defects from materials and workmanship for a period of 2 years from original purchase. If the product fails to work during normal use, CatEye will repair or replace the defect at no charge. Service must be performed by CatEye or an authorized retailer. To return the product, pack it carefully and enclose the warranty certificate (proof of purchase) with instruction for repair. Please write or type your name and address clearly on the warranty certificate. Insurance, handling and transportation charges to CatEye shall be borne by person desiring service.

CATEYE CO., LTD.

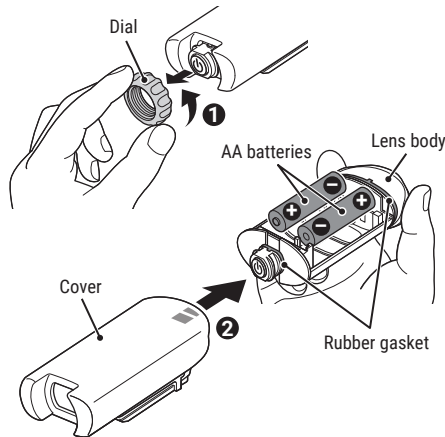
2-8-25, KUWAZU, HIGASHI SUMIYOSHI-KU, OSAKA, JAPAN 546-0041
For inquiries, please visit <https://cateye.com/intl/contact/>
[For US Customers]
CATEYE AMERICA, INC.
Please visit <https://www.cateyeamerica.com/contact-us/>
Toll Free : 800.5.CATEYE



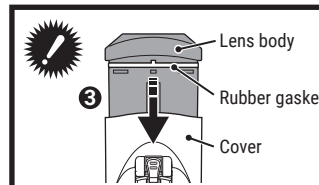
Light unit

FlexTight™ bracket
(H-34N)Alkaline AA batteries
(x2)

1 HOW TO REPLACE BATTERY



- 1 Rotate the dial to remove.
- 2 Pull the lens body out of the cover, and insert the batteries in the indicated orientation.
⚠ CAUTION!
 - Hold near the lens when removing the lens body from the cover.
 - Do not change the batteries when the headlight is wet.
 - To prevent injury or malfunction due to battery leakage or other problems, do not mix old and new batteries or different types of batteries, and be sure to insert the batteries in the indicated orientation. Also, be sure to remove the batteries if they are dead or if the headlight will not be used for a long time.
- 3 Put the lens body back into the cover.

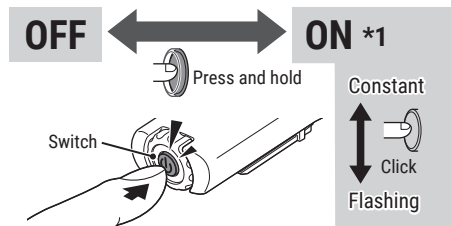


Precautions when replacing the battery

To maintain the high level of waterproofing, note the following points.

1. Ensure the rubber gasket is not misaligned or sticking out when inserting the lens body into the cover.
2. Firmly push the lens body into the cover, and then tighten the dial until it stops.

2 SWITCH OPERATION

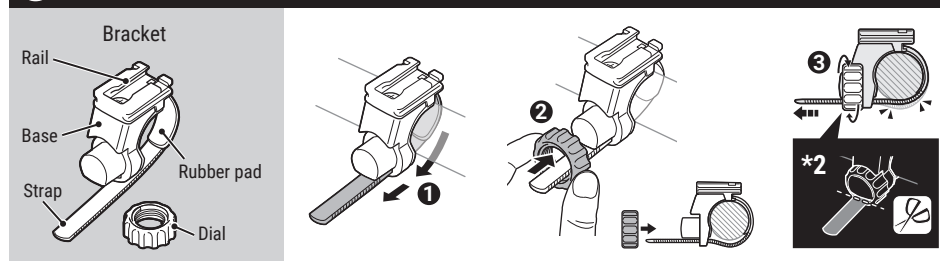


*1 When turning the light on, it lights up in the mode that was used last time. (Mode memory function)

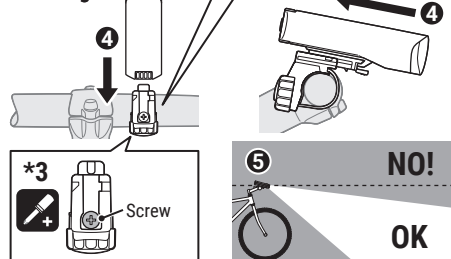
Remaining battery power:

The brightness of the headlight will decrease below the normal level about 30 minutes after the switch (indicator) turns red. Replace the battery as soon as possible.

3 HOW TO MOUNT TO A BICYCLE

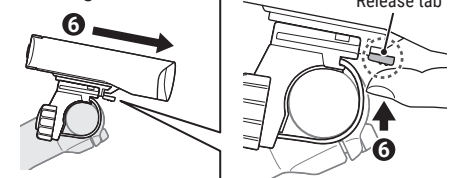


Mounting



- 1 Wrap the strap around the handlebar and thread it through the hole on the base.
- 2 Pass the strap through the dial and attach the dial to the protrusion on the base.
- 3 Rotate the dial to tighten.
- 4 Slide the light unit into the rail until it clicks.
- 5 Adjust the angle of the light.
* To readjust the angle of the light, loosen the dial and/or the screw enough to move the bracket, and firmly tighten them after adjustment. (*3)
- 6 Pull the light unit forward while pressing the release tab.

Removing



- ⚠ CAUTION!:**
- Be sure to tighten the dial by hand. If tightened too hard with a tool, the screw thread may be stripped.
 - If cutting the strap, be careful of injury from where the strap is cut. (*2)
 - Check the dial and screw (*3) on the bracket periodically, to monitor for any loosening.

Standard accessories

5338827N

FlexTight™ bracket



(H-34N)

Optional accessories

5340920

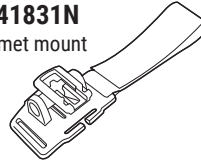
Bracket spacer



(H-37)

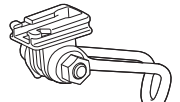
5341831N

Helmet mount



5342440

Center fork bracket



(CFB-100)