



RECHARGEABLE HEADLIGHT

ENG

AMPP200™

HL-EL042RC Manual

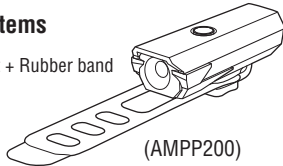
Before using the light, read this manual thoroughly and keep it for future reference. Do not use the light in any way other than as described in this manual.

Design Pat. Pending
Copyright © 2021 CATEYE Co., Ltd.
HLEL042RC-210305 1



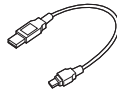
Included Items

Light unit + Rubber band



(AMPP200)

USB cable



(MICRO USB)

⚠ WARNING!!! (Risk of death; Prevention of accidents)

- Do not look directly at the light source. In addition, when mounting the light unit, ensure that the light will not dazzle other road users.
- Before riding, make sure the light unit is securely attached to the handlebar and that the light turns on. Do not use a damaged rubber band.
- Always attention to the remaining battery power by checking the indicator periodically while using.
- Do not disassemble or modify the light or any of the included items.

⚠ CAUTION! (Prevention of injury, damage, or property damage)

- Operating the light while riding is dangerous. Always ride safely.
- Note that the light becomes hot while illuminated. Do not block the lens or cover the light.
- Do not place it within children's reach.
- Carrying a spare headlight is recommended in case the battery runs out.
- When used with a cyclocomputer, attach the headlight as far away from the cyclocomputer as possible, as it may affect measurement.
- This device is rated IPX4 based on JIS C0920. Do not immerse the device in water. Doing so may cause a malfunction. Wipe off any moisture after using the device in rainy weather.
- Do not subject the light to strong vibrations, impacts, or excessive force. Discontinue use if any abnormality occurs.
- Do not charge the battery in any way or at any voltage other than that specified. Do not short-circuit the battery.
- Do not drop the light into a fire or heat the light.
- If the light unit or parts become dirty with mud, etc., clean with a soft cloth which is moistened with mild soap. Never apply paint thinner, benzine or alcohol; damage will result.

⚠ LITHIUM-ION BATTERIES

Recharge the battery for first time use or after long period of storage:

The voltage of the battery may drop due to self-discharge during long period of storage. Always fully charge the battery before use.

Cautions for charging and usage:

- Using a PC or USB battery charger with an output current of 500 mA or more is recommended for charging.
- Be sure that no dust or other foreign objects are attached to the plug of the USB cable before charging.
- Do not subject the light to vibrations while charging.
- When your PC is in sleep state, the unit cannot be charged.
- Once charging is completed, be sure to disconnect the USB cable from the charging port.
- Charging and lighting times are approximate values, and will vary by environmental and user conditions.
- Charging, discharging, and storing in high temperatures will cause the rechargeable battery to deteriorate faster. Do not place the light inside a vehicle or near a heater. Make sure to charge only when the ambient temperature is between 41°F and 104°F (5°C and 40°C).
- If the illumination time is significantly reduced even after proper charging, the rechargeable battery may be nearing the end of its service life.

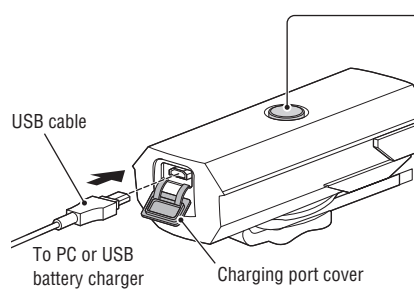
Cautions on storage:

- If the device will not be used for a long period of time, store it in a location that is not too hot or too humid.
- Charge the battery for about 30 minutes every 6 months.

Cautions for dispose:

When disposing the light unit, please do so in accordance with your local regulations.

1 CHARGING / SWITCH OPERATION



Switch (Indicator)



Charging



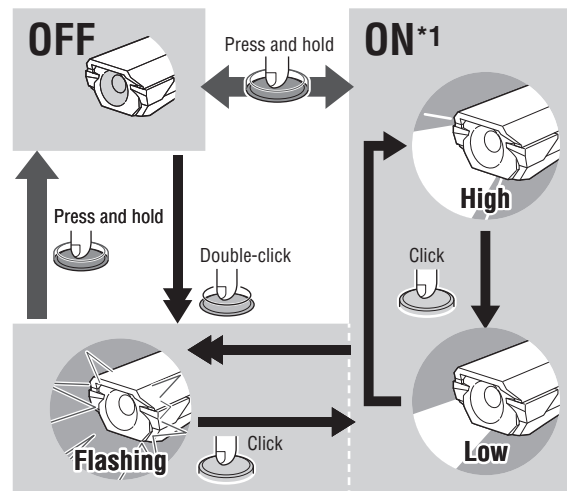
Charging is completed

* A flashing light indicates a charging error. Remove the USB cable and try again.

Standard charging time

Approx. **2.5h** (0.5A)

Switching the lighting mode



⚠ CAUTION!:

- Always charge the product before use.
- Once charging is completed, securely close the charging port cover.

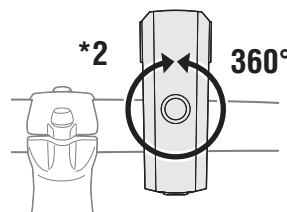
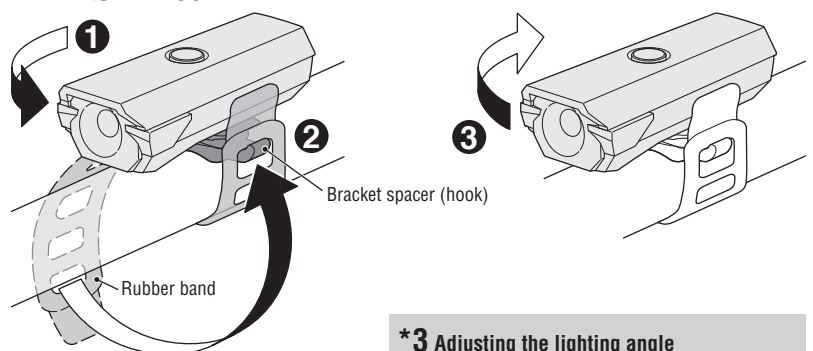
*1: When turning the light on, it lights up in the mode that was used the last time. (Mode memory function)

Remaining battery capacity:

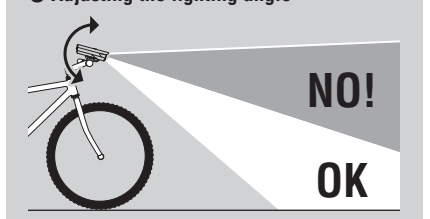
If the switch (indicator) turns red, charge the product as soon as possible.

2 HOW TO MOUNT TO A BICYCLE

Fold back $\varnothing 22 - 35$ mm



*3 Adjusting the lighting angle



- 1 Turn the light unit 90 degrees (perpendicular to rubber band), and attach the headlight to the handlebar.
- 2 Pull the rubber band tight and secure it to the hook on the bracket spacer so that the light unit is not loose.
- 3 Turn the light unit back toward the direction of travel.

*2: The light unit can be turned 360 degrees.

*3: When mounting the light unit, ensure that the light will not dazzle other road users.

SPECIFICATIONS

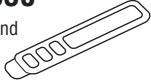
Light source	High-intensity LED x 1
Battery type	Li-ion 3.7 v - 800 mAh
Charge terminal	Micro B USB
Operating time	High : Approx. 1.5 hours
	Low : Approx. 13 hours
	Flashing : Approx. 30 hours
	* Average runtime at 68°F (20°C).
Standard charging time	Approx. 2.5 hours (0.5 A)
Charge voltage	5 v - 500 mA
Temperature range	Charging : 41°F – 104°F (5°C – 40°C)
	Operating : 14°F – 104°F (-10°C – 40°C)
Recharge/discharge number of times	About 300 times (until the rated capacity drops to 70%)
Waterproof	IPX4
Dimensions/Weight	3-25/64" x 1-3/8" x 1-19/64" (86 x 35 x 33 mm)
	(Excluding rubber band) / 2.19 oz (62 g)

* The specifications and design are subject to change without notice.

Standard accessories

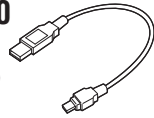
5343530

Rubber band



5342730

USB cable
(MICRO USB)



LIMITED WARRANTY

2-year Warranty: Light unit only (excludes battery deterioration)

CatEye products are warranted to be free of defects from materials and workmanship for a period of 2 years from original purchase. If the product fails to work during normal use, CatEye will repair or replace the defect at no charge. Service must be performed by CatEye or an authorized retailer. To return the product, pack it carefully and enclose the warranty certificate (proof of purchase) with instruction for repair. Please write or type your name and address clearly on the warranty certificate. Insurance, handling and transportation charges to CatEye shall be borne by person desiring service.

For UK and REPUBLIC OF IRELAND consumers, please return to the place of purchase. This does not affect your statutory rights.

CATEYE CO., LTD.

2-8-25, KUWAZU, HIGASHI SUMIYOSHI-KU, OSAKA, JAPAN 546-0041
For inquiries, please visit <https://cateye.com/intl/contact/>

[For US Customers]

CATEYE AMERICA, INC.

Please visit <https://www.cateyeamerica.com/contact-us/>

Toll Free : 800.5.CATEYE