



CATEYE URBAN WIRELESS

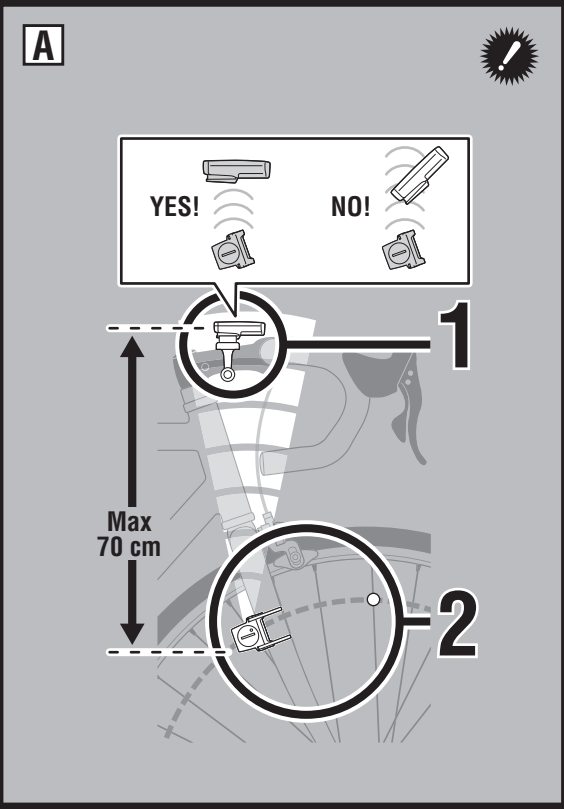
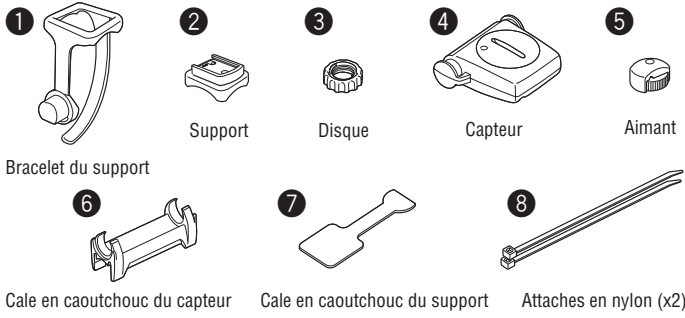
CYCLOCOMPUTER
CC-VT220W

Owner's Manual



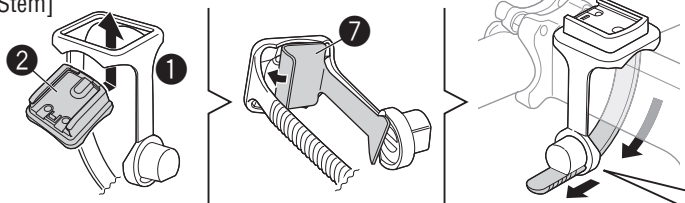
FR

INSTALL

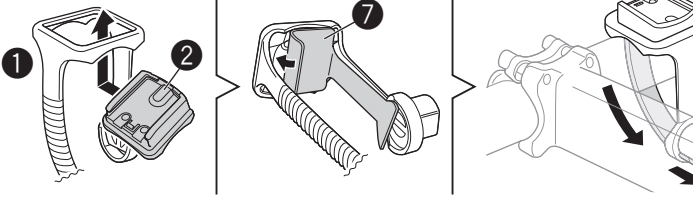


1 | Bracket

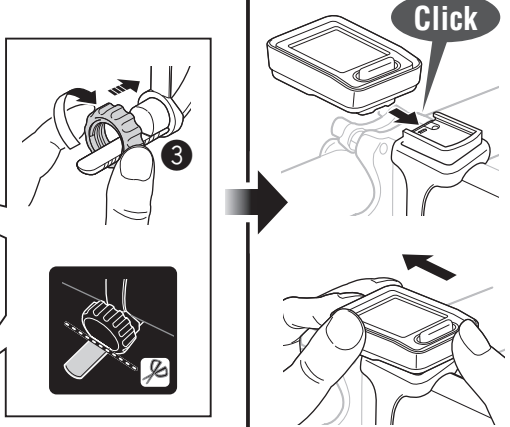
[Stem]



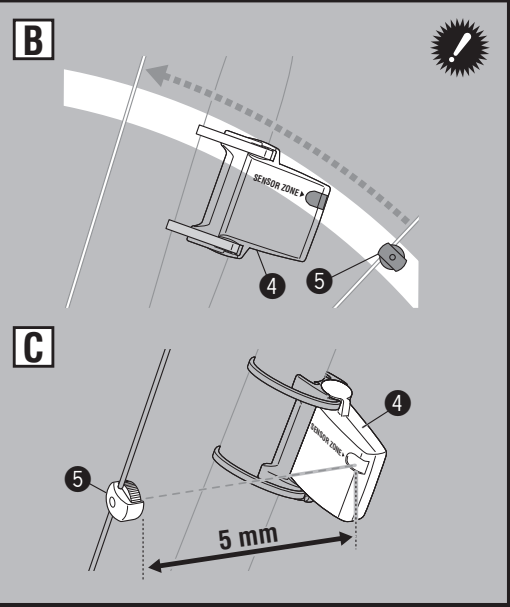
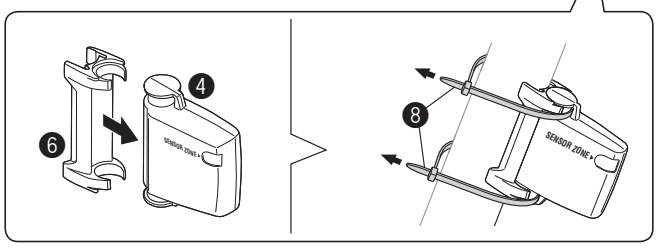
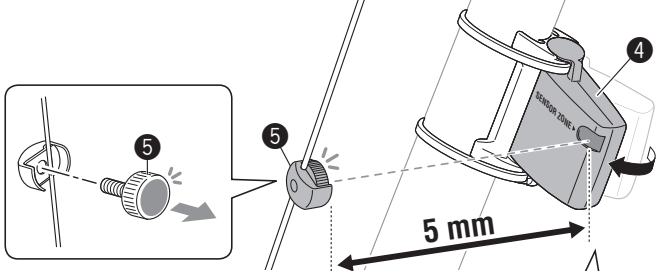
[Handlebar]



Computer



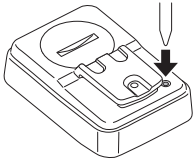
2 | Sensor/Magnet



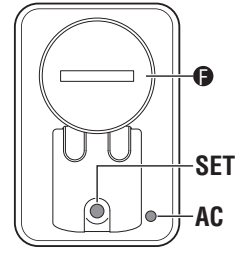
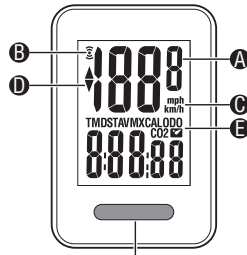
CC-VT220W URBAN WIRELESS

SETTING

1 | All Clear



TM = 0
DST = 0
AV = 0
MX = 0
CAL = 0
CO2 = 0
ODO = 0
☑ = 0



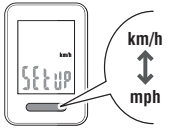
MODE

- A Vitesse actuelle
- B Icône de réception de signal du capteur
- C Unité de vitesse km/h mph
- D Flèche d'allure ▲▼

- E Mode sélectionné
 - F Couvercle du compartiment de la pile
- * Se référer à "Noms des éléments" pour plus de détails.

2 | Select km/h or mph

Set: km/h



Register the setting SET

3 | Tire Size

[Quick setting size]



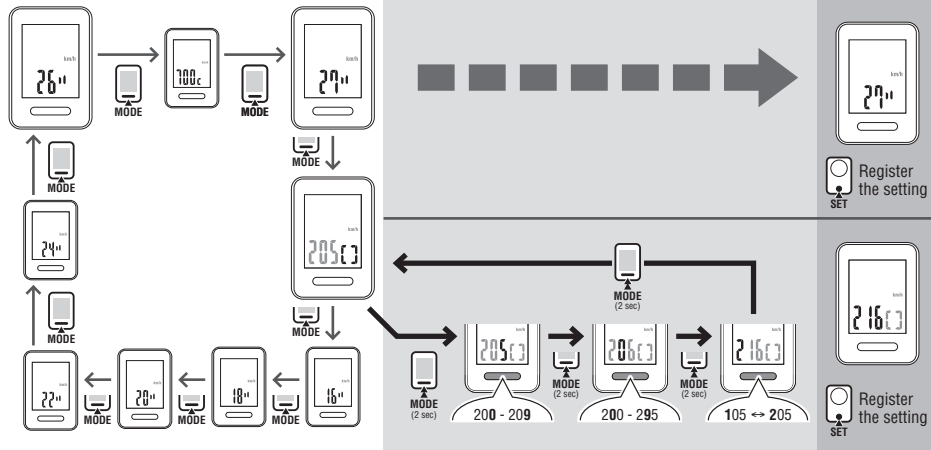
TIRE SIZE
Set: 27"

or

[Detailed setting size]



Set: 216

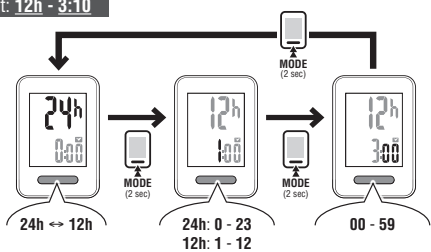


Register the setting SET

Register the setting SET

4 | Clock Setting

Set: 12h - 3:10

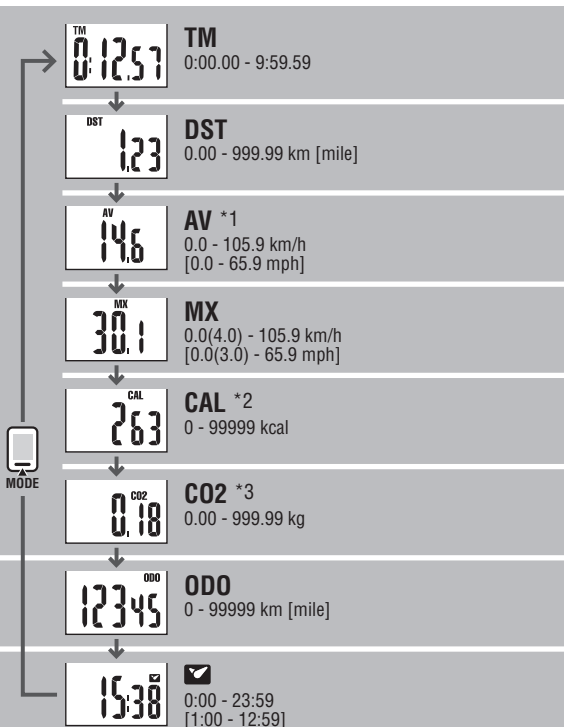
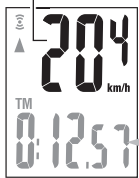


Register the setting (Finish) SET

OPERATION FLOW

Current Speed

0.0(4.0) - 105.9 km/h
[0.0(3.0) - 65.9 mph]



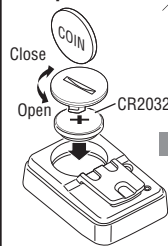
Data Reset



TM = 0
DST = 0
AV = 0
MX = 0
CAL = 0
CO2 = 0

Battery

Computer



SETTING
1.All clear

Sensor

