



Online Manual

PADRONE SMART +

CC-SC100B



Before use, ensure that you have read the usage instructions for the devices you have and that you sufficiently understand the functions of this device to ensure that you can use it safely and correctly.

To use Padrone Smart+, the “Cateye Cycling™” smartphone application (free of charge) is required.

For the latest information on the smartphones that are compatible with Cateye Cycling™ operations, see [“Cateye Cycling™ Recommended Devices”](#).



For troubleshooting related to the smart computers or to Cateye Cycling™, see [“Frequently Asked Questions”](#).

- * For explanatory purposes, in this manual red text/icons on the smart computer screen represent flashing items.
- * The display screens and illustrations used in this manual are provided for instructional purposes only. Actual screens and illustrations may differ depending on devices used.
- * The online manual and YouTube videos for this product are subject to change without notice.

Setup Flowchart

The setup procedure is as follows.

1. Checking package contents
2. Install Cateye Cycling™
3. Pairing with smart computer
4. Pairing with a sensor
(If you have sensors)
5. Mounting the bracket
6. Mounting the speed (cadence) sensor
(ISC-12) (Optional)
7. Wearing the heart rate sensor (HR-12)
(Optional)



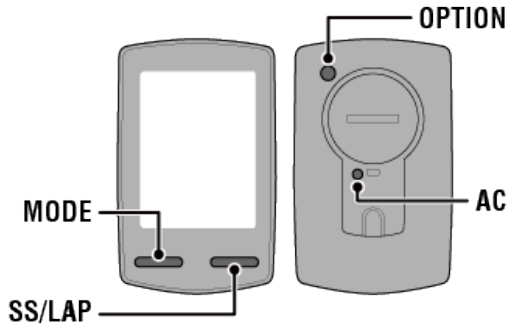
After setup is complete, please see How to Use.

Usage Instructions

Setup Flowchart

1. Checking package contents

• Smart computer unit



* Check button locations before starting set up.

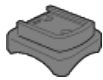
• Accessories



Bracket band



Bracket rubber pad



Bracket



Dial

* The Speed + Cadence Kit includes an integrated speed (cadence) sensor (ISC-12) in addition to the items above.

* The Triple Wireless Kit includes an integrated speed (cadence) sensor (ISC-12) and a heart rate sensor (HR-12).

2. Install Cateye Cycling™

3. Pairing with smart computer

4. Pairing with a sensor

(If you have sensors)

5. Mounting the bracket

6. Mounting the speed (cadence) sensor

(ISC-12) (Optional)

7. Wearing the heart rate sensor (HR-12)

(Optional)



Usage Instructions

Setup Flowchart

1. Checking package contents

2. Install Cateye Cycling™

Install the Cateye Cycling™ smartphone app (free) on the smartphone to be used.

Smartphone

1. Install Cateye Cycling™.



If using an iPhone



If using an Android smartphone



* See [Cateye Cycling Recommended Devices](#) for the latest information about smartphones recommended for use with Cateye Cycling™.

2. Launch Cateye Cycling™.

Follow the on-screen instructions and allow the use of GPS and Bluetooth® devices.

Important

When the smartphone's Bluetooth settings are turned on, it will search for devices, but do not configure settings at this stage. Switch to Cateye Cycling™ and follow the procedure below.

Once basic settings are complete the Trip screen appears.

To continue, refer to "Pairing with smart computer".

3. Pairing with smart computer

4. Pairing with a sensor

(If you have sensors)

5. Mounting the bracket

**6. Mounting the speed (cadence) sensor
(ISC-12) (Optional)**

**7. Wearing the heart rate sensor (HR-12)
(Optional)**



Usage Instructions

Setup Flowchart

1. Checking package contents

2. Install Cateye Cycling™

3. Pairing with smart computer

The following section explains how to format (initialize) the smart computer and then pair with a smartphone.

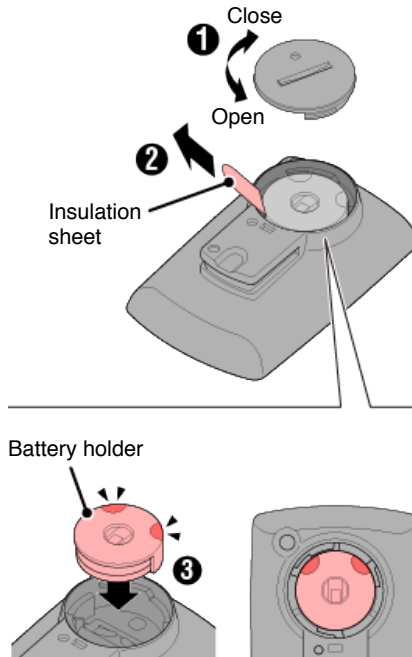
Important

- Pairing is necessary to use a smart computer or a sensor.
- Do not pair sensors at a race venue or in similar locations where there are a lot of other users.
Doing so may cause the smart computer to be paired with another device.

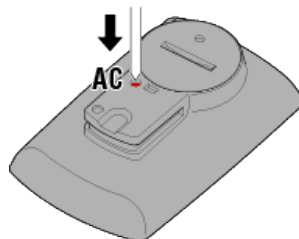
Smart computer

1. Pull free the smart computer's insulation sheet.

After pulling out the insulation sheet, return the battery holder and battery cover to their previous locations.



2. Press the AC button on the smart computer.

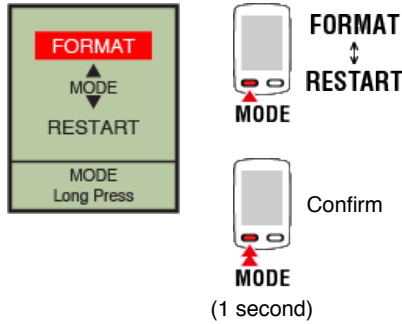


The initialization screen is displayed.

3. Press **MODE** once to cause **[FORMAT]** to blink, and then press **MODE** for **1 second**.


Caution

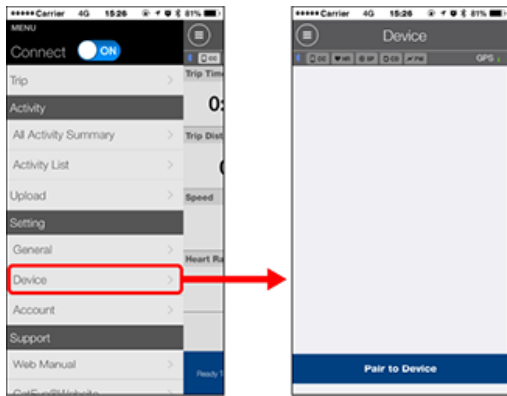
All data will be deleted and smart computer will be reset to factory default settings.



The display switches to the smartphone search screen.

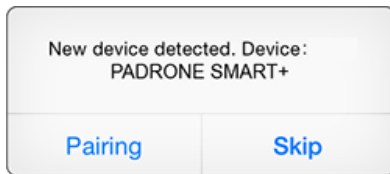
Smartphone

4. From  (**MENU**) at the top left of the screen, turn on **[Connect]** and tap **[Device]**.



Tap **[Pair to Device]** to start pairing.

When Cateye Cycling™ detects smart computer, a message is displayed on the smartphone.



Tap **[Pairing]** to complete pairing.

* Tap **[Smart computer name]** to display the settings configuration screen for the various smart computer settings.

 **Device**

Smart computer pairing is now complete.

If you have sensors, proceed to "Pairing with a sensor". If you do not have sensors, skip to "Mounting the bracket".

4. Pairing with a sensor

(If you have sensors)

5. Mounting the bracket

6. Mounting the speed (cadence) sensor

(ISC-12) (Optional)

7. Wearing the heart rate sensor (HR-12)

(Optional)



Usage Instructions

Setup Flowchart

1. Checking package contents

2. Install Cateye Cycling™

3. Pairing with smart computer

4. Pairing with a sensor

(If you have sensors)

Smart computer can be used with sensors compatible with Bluetooth SMART. Pair it with optional accessories or commercial sensors as required.

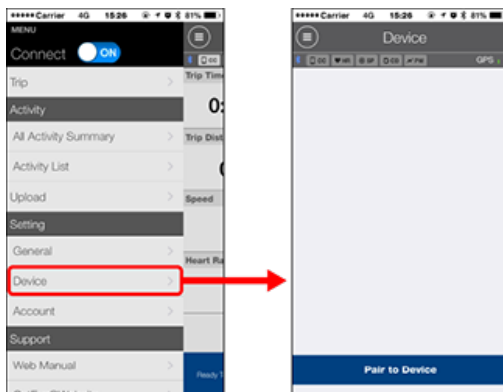
Important

- Pair all sensors that you intend to use.
- When using an iPhone, you cannot sync settings of commercial sensors. When measuring in Sensor Direct Mode, it is necessary to configure sensor settings separately via smart computer.

- ➔ 1. Switching to Sensor Direct Mode
2. Pairing a smart computer with a sensor
3. Tire circumference setting

Smartphone

1. Verify that [Connect] is set to ON in the  (MENU), and then tap [Device].



Tap [Pair to Device] to start pairing.

2. Activate the sensor.

- ➔ Activating the sensor

When Cateye Cycling™ detects the sensor signal, a message is displayed on the smartphone.

Tap [Pair]. The synchronized sensor is displayed on the [Device] screen and pairing is completed.

* When pairing a sensor with Cateye Cycling™, an "A" is displayed after the sensor name.

* If you have paired a sensor capable of speed measurement, proceed to step 3.

3. Set the tire circumference for a sensor capable of speed measurement.

Tap [Device], and then tap [Sensor name] > [Tire Circumference] (the length of the outer circumference of the tire).

Select the tire circumference according to the tire size written on the side of the tire.

[➔ Determining tire circumference](#)

* Default value: 2096 mm (700x23c)

* Requires to set tire circumference for each sensor.

* You can also change sensor names and cancel pairing from this screen.

Sensor pairing is now complete.

* If you want to pair another sensor, repeat the same procedure again.

Important

Cadence, heart rate, and power data will not be displayed under the initial configuration. Change the measurement screen to be able to display measured values from paired sensors.

[➔ Changing the measurement screen](#)

5. Mounting the bracket

6. Mounting the speed (cadence) sensor

(ISC-12) (Optional)

7. Wearing the heart rate sensor (HR-12)

(Optional)



Usage Instructions

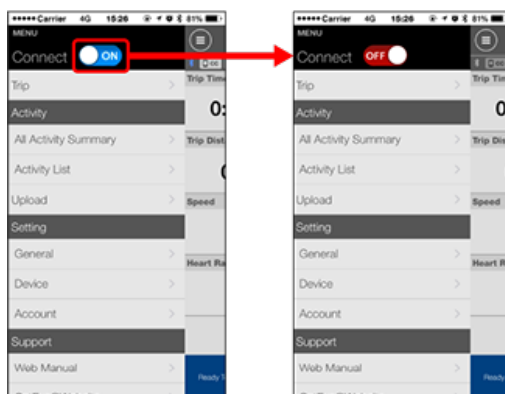
Pairing with a sensor

Switching to Sensor Direct Mode

Switch from Mirror Mode to Sensor Direct Mode.

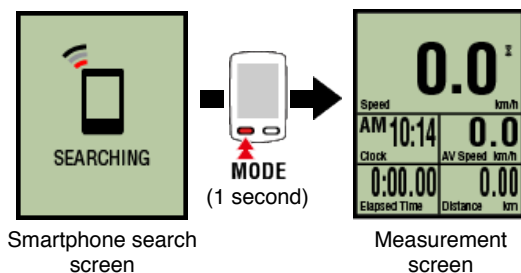
Smartphone

1. Close Cateye Cycling™ or from  (MENU), turn off [Connect].



Smart computer

2. From the smartphone search screen, press **MODE** for 1 second to switch to **Sensor Direct Mode**.



* Smart computer will search for a sensor instead of your smartphone. In this mode, the sensor icon flashes to indicate sensor reception status.

- **S** (Flash): When the speed signal is received
- **C** (Flash): When the cadence signal is received
- **S/C** (S and C flash simultaneously): When the speed/cadence (ISC) sensor signal is received
- **H** (Flash): When the heart rate signal is received
- **P** (Flash): When the power signal is received

Important

Sensor Direct Mode and Mirror Mode measure independently and data has no continuity.

Pairing a smart computer with a sensor

Tire circumference setting

Pairing with a sensor

Switching to Sensor Direct Mode

Pairing a smart computer with a sensor

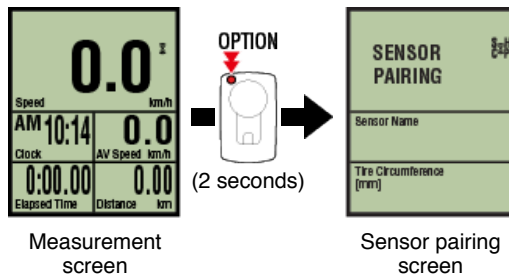
Pair a sensor that you want to use with smart computer.

Important

- Pairing (sensor ID synchronization) must be performed in order to use a sensor.
- Do not pair sensors at a race venue or in similar locations where there are a lot of other users. Doing so may cause the smart computer to be paired with another device.
- Pair all sensors that you intend to use.
- During pairing or when connected to a smartphone, if sensor information is stored in Cateye Cycling™, this information is written to the smart computer.

[➔ Pairing with a sensor](#)

1. From the measurement screen, press **OPTION** for 2 seconds to switch to the sensor pairing screen.



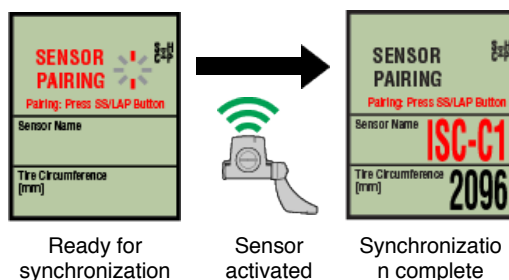
* When the sensor pairing screen is left on for 1 minute, the smart computer returns to the measurement screen.

2. Press **SS/LAP** to start pairing.



3. Activate the sensor that you want to pair.

[➔ Activating the sensor](#)



The name of the synchronized sensor is displayed and pairing is completed.

- **SP** : Speed sensor

- **ISC** : Speed/cadence sensor

- **CD** : Cadence sensor

- **HR** : Heart rate sensor

- **PW** : Power sensor

* When pairing a sensor with a smart computer, a "C" is displayed after the sensor name.

Important

When the smart computer displays [**ID FULL**] on the screen and returns to the sensor pairing screen, the maximum number of sensors have been paired.

Up to 9 separate sensor IDs can be paired with the smart computer.

If the maximum number of sensors have been paired, in the sensor pairing screen, press **OPTION** for 4 seconds to clear all pairings.

Then re-pair the required sensors.

* Pairing standby time is 5 minutes.

Activate the sensor within this time.

* If you want to pair another sensor, repeat steps 2 and 3.

4. Press **OPTION** to return to the measurement screen.



Pairing is now complete.

If you have paired a sensor capable of speed measurement, proceed with setting the tire circumference.

Tire circumference setting

Pairing with a sensor

Switching to Sensor Direct Mode

Pairing a smart computer with a sensor

Tire circumference setting

Set the tire circumference for a sensor capable of speed measurement.

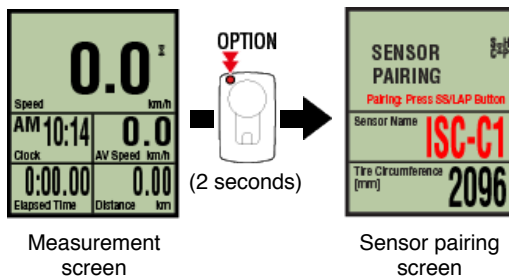
Important

- Pairing (sensor ID synchronization) must be performed first.

[➔ Pairing a smart computer with a sensor](#)

- Set tire circumference for each sensor.
The default value is 2096 mm (700x23c).

1. From the measurement screen, press **OPTION** for 2 seconds to switch to the sensor pairing screen.



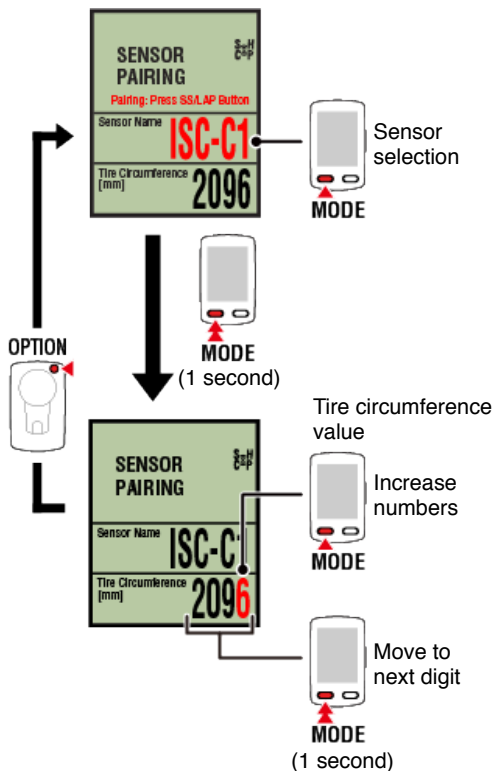
* When the sensor pairing screen is left on for 1 minute, the smart computer returns to the measurement screen.

2. Select the sensor you want to set, and enter the tire circumference.

Enter the circumference in mm of the tire (the length of the outer circumference of the tire) on which the sensor is installed.

(Setting range: 0100 – 3999 mm)

[➔ Determining tire circumference](#)



* Sensors that can be selected are those that have been paired with Cateye Cycling™ or a smart computer. The letter that appears after the sensor name indicates how the sensor was paired.

- **A** : Sensor paired with Cateye Cycling™
- **C** : Sensor paired with a smart computer

* Error is displayed if values outside the setting range are entered.

3. Press **OPTION** to confirm settings.



Pressing **OPTION** again returns to the measurement screen.

* If you have changed settings, always press **OPTION** to confirm changes.

This completes the tire circumference setting procedure.

Setup Flowchart

1. Checking package contents

2. Install Cateye Cycling™

3. Pairing with smart computer

4. Pairing with a sensor

(If you have sensors)

5. Mounting the bracket

The bracket can be mounted on either the stem or the handlebar.

Watch video

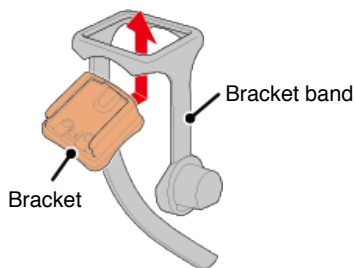


See illustrations

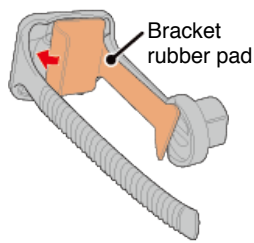
- ➔ [When mounting on the stem](#)
- ➔ [When mounting on the handlebar](#)
- ➔ [Mounting and removing the smart computer unit](#)

• When mounting on the stem

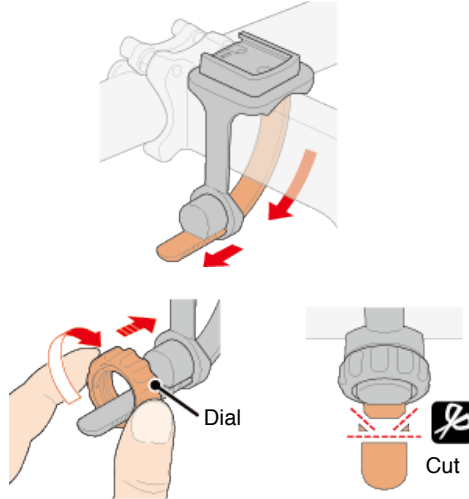
1. Check bracket orientation and attach it to the bracket band.



2. Remove the seal from the bracket rubber pad and stick the bracket rubber pad onto the bracket band.



3. Loop the bracket band around the stem and tighten the dial to secure it.

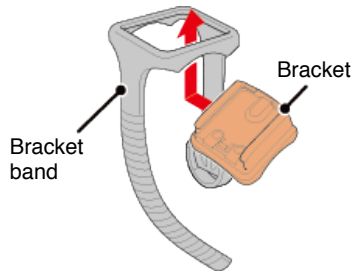


Caution

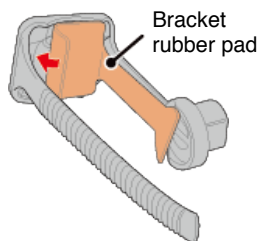
- Always tighten the dial by hand.
Using a tool or other object to tighten the dial may crush the screw thread.
- Trim bracket band carefully so the cut end will not cause injury (see step 3 above).

• When mounting on the handlebar

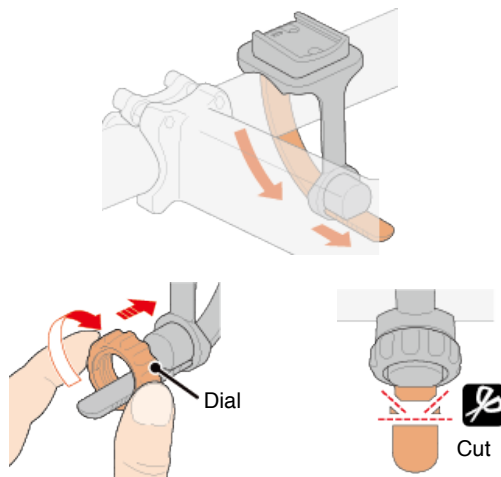
1. Check bracket orientation and attach it to the bracket band.



2. Remove the seal from the bracket rubber pad and stick the bracket rubber pad onto the bracket band.



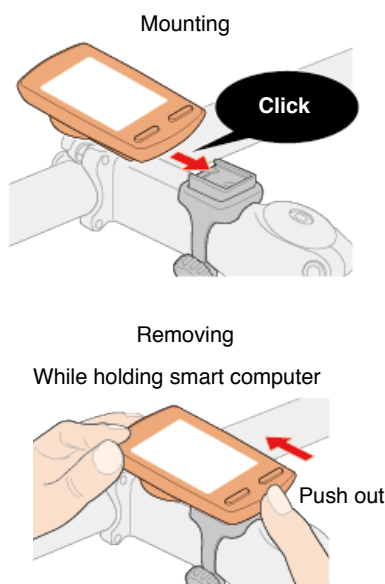
3. Loop the bracket band around the handlebar and tighten the dial to secure it.



Caution

- Always tighten the dial by hand. Using a tool or other object to tighten the dial may crush the screw thread.
- Trim bracket band carefully so the cut end will not cause injury (see step 3 above).

• Mounting and removing the smart computer unit



Caution

To remove smart computer, push out while holding the unit with the other hand to ensure that it does not fall.

6. Mounting the speed (cadence) sensor (ISC-12) (Optional)

7. Wearing the heart rate sensor (HR-12) (Optional)

Usage Instructions

Setup Flowchart

1. Checking package contents

2. Install Cateye Cycling™

3. Pairing with smart computer

4. Pairing with a sensor

(If you have sensors)

5. Mounting the bracket

6. Mounting the speed (cadence) sensor

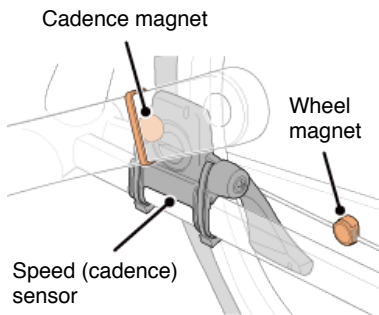
(ISC-12) (Optional)

The speed (cadence) sensor can be mounted either on the top or bottom of the chain stay.

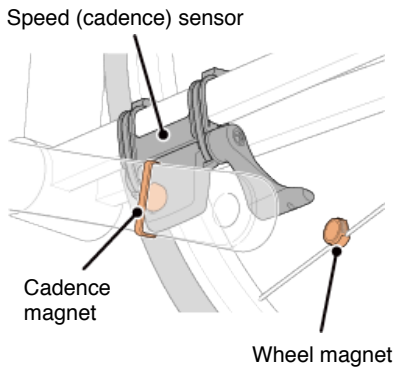
Caution

If the speed (cadence) sensor is mounted on the bottom of the chain stay rather than on the top, the adjustment range between the sensor and the magnet will be narrower.

• Mounting on top of chain stay



• Mounting on bottom of chain stay



* Mounting procedures give instructions for mounting on the top of the chain stay.

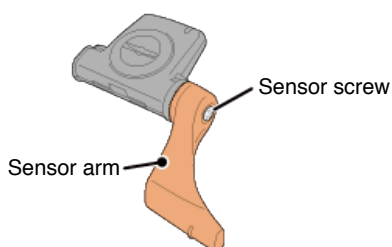
Watch video



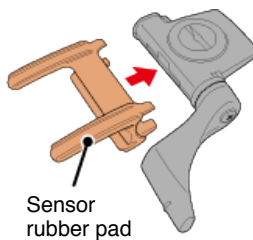
See illustrations

1. Temporarily attach the sensor to the left chain stay.

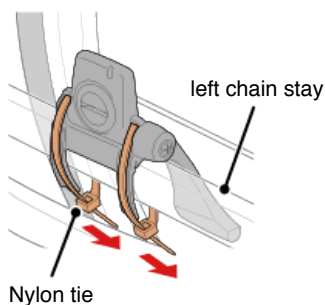
- (1) Loosen the sensor screw using a Phillips screwdriver and check that the sensor arm moves.



- (2) Attach the sensor rubber pad to the sensor.



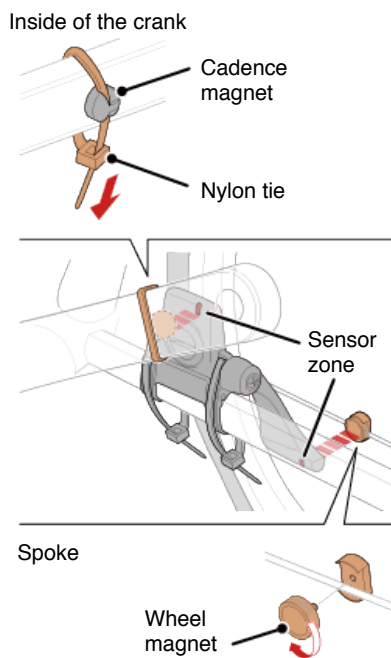
- (3) Refer to the illustration and temporarily attach the sensor to the left chain stay with nylon ties.



Caution

Do not fully tighten the nylon ties. Once the nylon ties are fully tightened they cannot be removed.

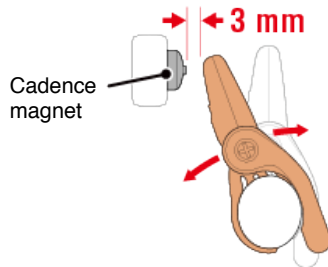
2. Temporarily attach the magnet.



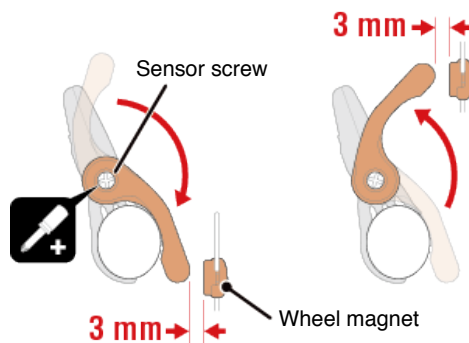
- (1) Using a nylon tie, temporarily attach the cadence magnet to the inside of the left crank arm so that it faces the cadence sensor zone.
 - (2) Rotate the sensor arm and temporarily attach the wheel magnet to a spoke facing the speed sensor zone.
- * If the sensor cannot be positioned so that both magnets (speed and cadence) pass through their respective sensor zones, reposition the sensor and the magnets so that each magnet passes through its sensor zone.

3. Adjust the gap between the sensor zone and the magnet.

- (1) Tilt the sensor so that the gap between the cadence magnet and the cadence sensor zone is approximately 3 mm, then fasten the sensor securely with nylon ties.



- (2) Rotate the sensor arm so that the gap between the wheel magnet and the speed sensor zone is approximately 3 mm, then tighten the sensor screw securely.



4. Secure all parts.

Tighten the sensor's nylon ties, the sensor screw, and the magnets, and check that they are not loose.

Trim off the excess nylon tie.

* If using pedals with steel axles, the cadence magnet can be attached magnetically to the

pedal axle. In this case, remove the adhesive tape from the magnet and do not use the nylon tie.

7. Wearing the heart rate sensor (HR-12)

(Optional)



Usage Instructions

Setup Flowchart

1. Checking package contents
2. Install Cateye Cycling™
3. Pairing with smart computer
4. Pairing with a sensor
(If you have sensors)
5. Mounting the bracket
6. Mounting the speed (cadence) sensor
(ISC-12) (Optional)
- 7. Wearing the heart rate sensor (HR-12)**
(Optional)

Heart rate measurement is performed by wearing a heart rate sensor around the chest.

Before wearing the heart rate sensor

Warning

Never use this device if you use a pacemaker.

- To eliminate measurement errors, it is recommended to moisten the electrode pads with water or apply electrolyte cream to the pads.
- If you have sensitive skin, moisten the electrode pads with water and wear it over a thin shirt.
- Chest hair may interfere with measurement in some cases.

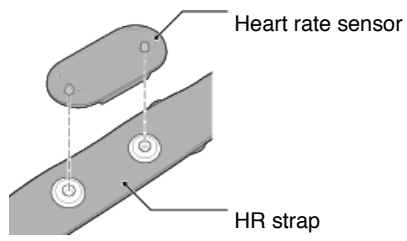
Watch video



See illustrations

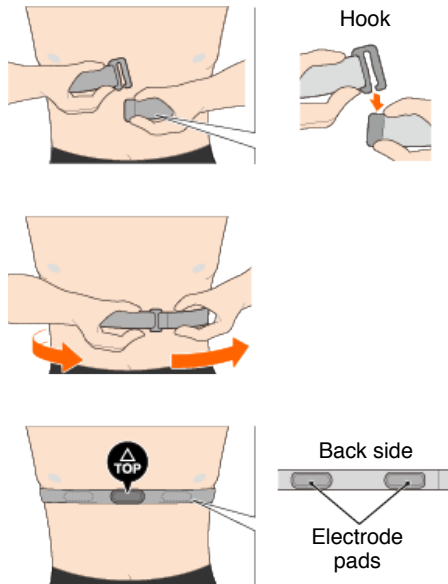
1. Attach the sensor to the HR strap.

Press until you hear a clicking sound.



2. Wear the HR strap by sliding the hook over the other end of the strap.

Wind the HR strap around your body and adjust the length to suit your chest (underbust). Overtightening the strap may cause discomfort during measurement.



- * Wear the heart rate sensor so that **TOP** faces up.
- * Ensure that the electrode pads are in close contact with your body.
- * If you have dry skin or are wearing the sensor over a shirt, measurement errors may result. In such cases, moisten the electrode pads with water.

Usage Instructions

Usage Instructions

You can use smart computer in mirror mode or sensor direct mode depending on your preferences or the situation.

Important Information for iPhone Users

Mirror Mode and Sensor Direct Mode functions and display details

Mirror Mode

Sensor Direct Mode

What is Mirror Mode?

About screen displays

Smart computer screen

Cateye Cycling™ screen

Start measurement

Viewing activities

With Cateye Cycling™, you can check and manage trip and summary data (called "activities").

All activity summary

Activity list

Uploading

Changing settings

Cateye Cycling™ can be used to configure all settings for smart computer and connected devices.

* Only sensor pairing settings can be configured with just the smart computer.

Important

Sensor information on the smart computer is overwritten with data from Cateye Cycling™ when the smart computer connects to the smartphone.

* Information on commercial sensors paired with the smart computer remains as it is.

General

Device

Account

Usage Instructions

Important Information for iPhone Users

Important


Currently, some restrictions on functions that can be used with Padrone Smart+ apply to Cateye Cycling™ for iPhone.

These functions will become available through updates to the Padrone Smart+ firmware and the Cateye Cycling™ app.

It is recommended that users update to the most recent version of Cateye Cycling™ and Padrone Smart+ firmware whenever possible.

* Areas relevant to the above are described with the  mark.

Updating the firmware:

With the smart computer connected to the iPhone, tap  (MENU) > [Device] > [Smart computer name] > [Update Firmware].

Usage Instructions

Functions and details displayed in Mirror Mode and Sensor Direct Mode

The following functions can be used in Mirror Mode and Sensor Direct Mode.

Measured data and functions	Mirror Mode		Sensor Direct Mode
	CC	App	
Measurements			
Current speed	OK	OK	OK
Average speed	OK	NO	OK
Maximum speed	OK	NO	OK
Trip distance	OK	OK	OK
Total distance	OK	NO	OK
Countdown distance	OK	NO	NO
Elapsed time	OK	OK	OK
Trip time	OK	OK	NO
Countdown time	OK	NO	NO
Cadence	OK*1	OK*1	OK*1
Average cadence	OK*1	NO	OK*1
Maximum cadence	OK*1	NO	OK*1
Heart rate	OK*1	OK*1	OK*1
Average heart rate	OK*1	NO	OK*1
Maximum heart rate	OK*1	NO	OK*1
Power	OK*1	OK*1	OK*1
Average power	OK*1	NO	OK*1
Maximum power	OK*1	NO	OK*1
Custom average power	OK*1	NO	NO
Power balance	OK*2	NO	OK*2
Date	OK	NO	OK
Clock time	OK	NO	OK
Calorie consumption	OK	NO	NO
Altitude	OK	NO	NO
Ascending altitude	OK	NO	NO
Total altitude	OK	NO	NO
Slope angle	OK*3	NO	NO
Maximum slope	OK*3	NO	NO
Average slope	OK*3	NO	NO
Notifications			
Incoming phone, SMS (Text) and email application notifications	OK	NO	NO
Function			
Compass	OK	NO	NO
Simple navigation function	OK	NO	NO
Lap function	OK	NO	NO
Auto lap function	OK	OK	NO
Countdown function	OK	NO	NO
Auto pause function	OK	NO	NO
Recording			
Route	NO	OK	NO
Graph	NO	OK	NO
Lap	NO	OK	NO

*1 Heart rate, cadence, and power measurements require pairing with each sensor.

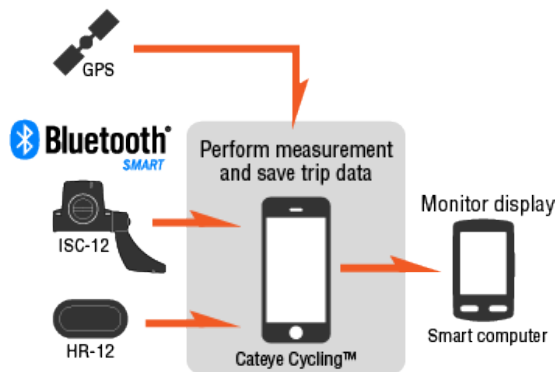
*2 Requires separate left and right power sensors.

*3 Requires a smartphone with a built-in pressure sensor.

Usage Instructions

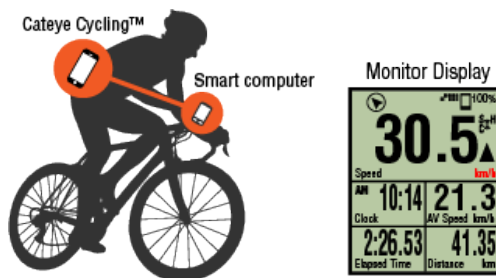
What is Mirror Mode?

Mirror Mode refers to syncing smart computer with Cateye's smartphone app, Cateye Cycling™. By using smart computer with Cateye Cycling™, you can connect smart computer and optional/commercial sensors (speed, cadence, heart rate, and power) with your smartphone, and record log information including your smartphone's GPS function while you measure. In this case smart computer becomes a monitor that displays smartphone measurement data in real time.



The Bluetooth word mark and logos are owned by the Bluetooth SIG, Inc. and any use of such marks by CATEYE Co., Ltd. is under license. Other trademarks and trade names are those of their respective owners.

By mounting a smart computer on your handlebars, in addition to being able to operate the Cateye Cycling™ smartphone app when your smartphone is in your bag or pocket, you can also view measurement data and check if you have received any phone calls or emails. This feature reduces smartphone battery consumption and avoids the danger of dropping your smartphone.



It is possible to upload measurement results (trip data) immediately to a service site such as Cateye Atlas™.

* Even if you do not have a sensor capable of speed measurement, you can use smart computer as a "sensorless" cyclocomputer using your smartphone's GPS function.

Smart computer screen

Cateye Cycling™ screen

Usage Instructions

What is Mirror Mode?

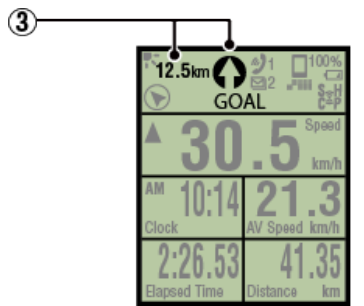
Smart computer screen

The screen segments and display functions to be displayed on the measurement screen can be assigned through screen customization.


The following explains about customizable display, using the default screen as an example.



Measurement screen



Simple Navigation display


* To customize the screen, tap  (MENU) > [Device] > [Smart computer name] > [Display Customization].

[➔ Changing the measurement screen](#)

① Explanation of icons:

(Night Mode)

Turns on when the Night Mode setting is ON.

* The Night Mode settings can be accessed by tapping  (MENU) > [Device] > [Smart computer name].

[➔ Device](#)

(Compass)

Allows you to check which direction is north.

(Incoming call/SMS/email notification icon)


The display shows the number of incoming notifications and flashes for apps with incoming notifications.

When an incoming notification is received, the display will show the app name as well as the name of the sender.

! iPhone

Only incoming notifications for e-mail addresses registered through [Phone] and [Add Account] will be displayed.

When an incoming notification is received, the display will not show the app name or the name of the sender.

- * Contact name registered with non-alphabet characters will be displayed as "Other".
- * The incoming notification icons and count are reset when measurement is paused, reset, or finished.
- * The notification settings can be accessed by tapping  (MENU) > [Device] > [Notification Setting].

 [Configuring Incoming Notifications](#)

 100% (Remaining smartphone battery)

Indicates the smartphone's remaining battery.

 (Smart computer battery alarm)

Flashes when the smart computer's remaining battery power is low. Replace battery as soon as possible.

 [Battery Replacement : Smart computer](#)

 (GPS sensitivity)

Indicates GPS signal reception status.

 (Sensor signal icon)

Indicates the Bluetooth® sensor's signal reception status.

- Types of icons:

S (Speed signal)

Indicates the speed sensor signal.

C (Cadence signal)

Indicates the cadence sensor signal.

S / C (S and C displayed simultaneously)

Indicates the speed (cadence) sensor (ISC) signal.

H (Heart rate signal)

Indicates the heart rate sensor signal.

P (Power signal)

Indicates the power sensor signal.

- Icon states:



On

Receiving signal in Mirror Mode

Off

No signal

 (Pace arrows)

Indicate whether the current speed is faster () or slower () than the average speed.

km/h · m/h · rpm · bpm (measurement unit)

Displays the currently selected measurement unit.

- **On**

Measurement stopped


- **Flashing**

Measurement in progress

Displays various measurement data.

- Speed/cadence/heart rate flash:

If using a CATEYE sensor, the values related to the sensor's battery replacement period start flashing to indicate that it is time to replace the battery.

 Battery replacement : Optional sensors

- Power values flash:

When using separate left and right power sensors, power values flash on and off to indicate that only signals from one sensor are being received.

③ Direction and straight-line distance

Displays the direction and straight-line distance to the goal (or the start point).

Cateye Cycling™ screen

Usage Instructions

What is Mirror Mode?

Smart computer screen

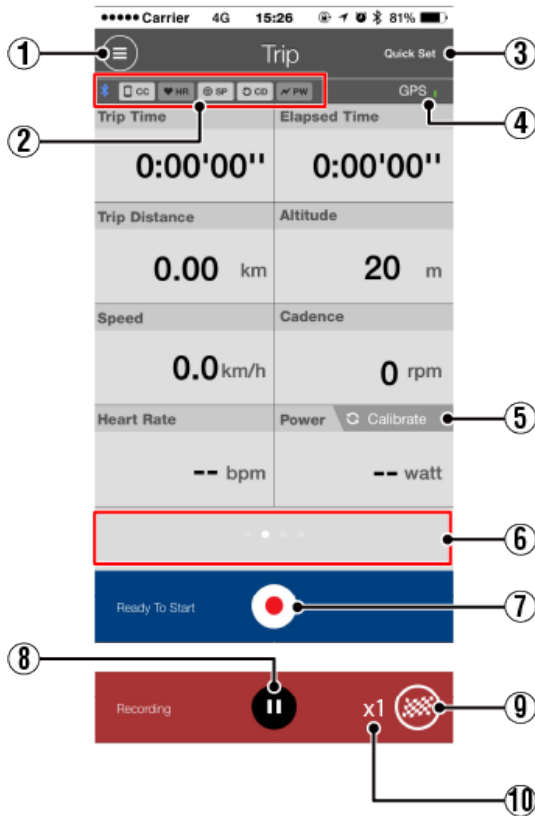
Cateye Cycling™ screen


This is the Cateye Cycling™ home screen.

From this screen you can start, pause, and finish measurement.





* Starting, pausing, and finishing measurement can be done remotely from the smart computer unit.

* Measurement data will be displayed as [--] if the sensor signal cannot be received.





①  **Menu button**
Displays the menu.

② **Device connection status icon**
Displays connection status with other devices.

-  **CC** (Smart computer)
-  **HR** (Heart rate sensor)
-  **SP** (Speed sensor)
-  **CD** (Cadence sensor)

·  (Power sensor)

* A grayed-out icon indicates an unconnected sensor.

* Speed (cadence) sensors (ISC) display both  **SP** and  **CD**.

③ Quick Set

The Quick Set function allows various measurement functions to be turned ON/OFF or a goal to be set in simple navigation quickly.

④ GPS icon

Indicates GPS signal reception status.

⑤ Calibration button

Returns the power sensor measurement to 0.

 Power sensor calibration

⑥ Switch display mode

Swiping the screen switches to the map display, graph display, and lap display, letting you check where you have been and view measurement data.



Graph display



Map display

Lap No.	LapTM	SplitTM	DST	SPD	HR	CDC	PW
	0:00:23	0:14:34	8.14	23.8	0	71	0
5A	0:02:42	0:14:10	1.00	26.7	0	79	0
4A	0:03:01	0:11:28	1.00	26.5	0	80	0
3A	0:02:44	0:08:27	1.00	25.2	0	80	0
2A	0:02:52	0:05:43	1.00	25.8	0	78	0
1A	0:02:51	0:02:51	1.00	25.8	0	75	0

Lap display

* Tap the screen on the lap display to switch between **AV** (average value) and **MX** (maximum value).

* Data recorded using Auto Lap will be shown with an "A" after the number.

⑦ Start measurement button

Starts measurement.

* Not available if speed signal or GPS signal cannot be received.


⑧ Pause button

Pauses measurement.

⑨ Flag button

Finishes measurement.

Switches to the trip upload screen.

 Saving and uploading trips

⑩ Number of temporarily saved trips

Displays the number of temporarily saved trips.

Important

The maximum number of trips that can be saved temporarily is 30. If this number is exceeded, the icon changes to [Full] and it is not possible to temporarily save any more trips. It is recommended that trip data is saved and uploaded regularly.

Usage Instructions

Start measurement

Important

- **Smartphone use**

When measuring, turn the smartphone display off, and with Cateye Cycling™ running, store the smartphone in a safe place such as a bag or pocket. As measurement start/pause/resume and reset operations (finish trip) can be performed remotely from smart computer, there is no need to take out your smartphone until you want to save or upload trips.

* Cateye Cycling™ can measure even when running in the background.

- **Restrictions on measurement**

In Mirror Mode, the maximum elapsed time that can be measured is approximately 1000 hours and maximum trip distance is 10000 km [6200 mile]. When either of these values is exceeded, measurement finishes and trip data is saved temporarily.

In this case, the display returns to the [READY] (measurement standby) screen ready to start the next trip measurement.

This section explains the measurement flow and the measurement functions.

1. Connecting smart computer and smartphone

2. Performing pre-measurement preparation

3. Starting measurement

4. Pausing/resuming measurement

5. Finishing measurement (reset operation)

6. Saving and uploading trips

- **Functions during measurement**

Switching measurement data display

Simple navigation function

Lap function

Auto lap function

Countdown function

Auto pause function

Power-saving mode

Button lock function

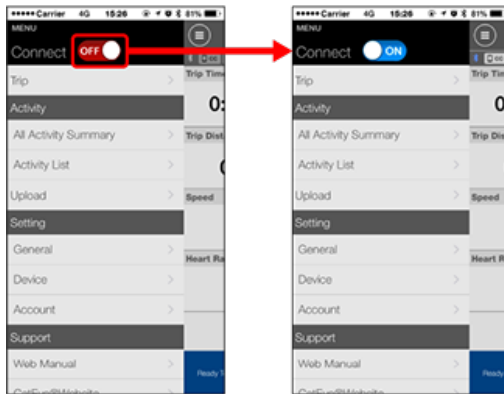
If you have power sensors

Start measurement

1. Connecting smart computer and smartphone

Smartphone

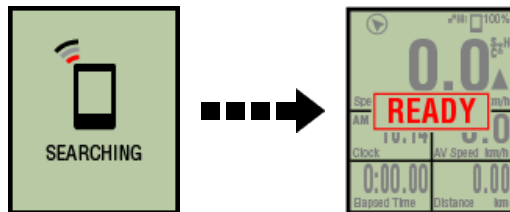
1. Launch Cateye Cycling™, and from  (MENU) turn on [Connect].



Smart computer

2. On the measurement screen, press **MODE** for 1 second to display the smartphone search screen and connect with your smartphone.

When smart computer connects to a smartphone, it switches to the measurement standby display.



Smartphone search screen

Measurement standby

* If the connection is made when Cateye Cycling™ is already measuring, [PAUSE] and measured values are displayed.

* The appearance of the smart computer screen depends on the state of Cateye Cycling™.

Smartphone connection is now complete.

2. Performing pre-measurement preparation

3. Starting measurement

4. Pausing/resuming measurement

5. Finishing measurement

(reset operation)

6. Saving and uploading trips

- **Functions during measurement**

Switching measurement data display

Simple navigation function

Lap function

Auto lap function

Countdown function

Auto pause function

Power-saving mode

Button lock function

If you have power sensors

Start measurement

1. Connecting smart computer and smartphone

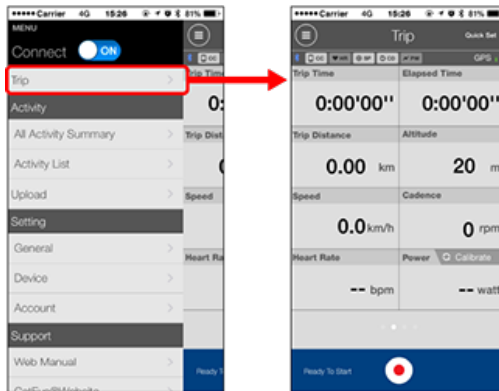
2. Performing pre-measurement preparation

The following procedure shows how to turn various measurement functions ON/OFF and how to configure goal settings as desired.

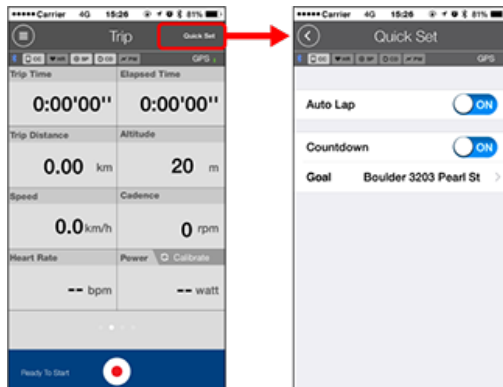
This section also explains the quick set feature for quickly configuring settings from the Trip screen.

Smartphone

1. Tap (MENU) and then [Trip].



2. Tap [Quick Set] on the upper right of the screen.




• Auto lap / Countdown

Turn the function ON/OFF as desired.


 Auto lap function

 Countdown function

* The settings reflect the previous setting configuration. Navigate to the following screens to change settings.

• Auto Lap :  (MENU) > [General] > [Auto Lap]

 General

• Countdown :  (MENU) > [Device] > [Countdown]

 Device

• **Goal**

Specifies a goal in simple navigation.

 [Simple navigation function](#)

3. Tap  (back).

The display returns to the Trip screen.

3. Starting measurement

4. Pausing/resuming measurement

**5. Finishing measurement
(reset operation)**

6. Saving and uploading trips

• **Functions during measurement**

Switching measurement data display

Simple navigation function

Lap function

Auto lap function

Countdown function

Auto pause function

Power-saving mode

Button lock function

If you have power sensors

Start measurement

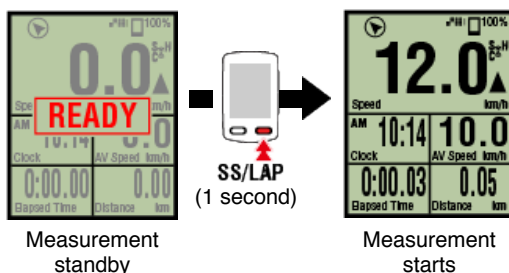
1. Connecting smart computer and smartphone

2. Performing pre-measurement preparation

3. Starting measurement

Smart computer

When smart computer is on the [READY] (measurement standby) screen, pressing **SS/LAP** for 1 second starts measurement.



* If the connection with the smartphone is interrupted during measurement, smart computer switches to the smartphone search screen. When the connection is reestablished, Smart computer returns to the measurement screen.

4. Pausing/resuming measurement

5. Finishing measurement (reset operation)

6. Saving and uploading trips

• Functions during measurement

Switching measurement data display

Simple navigation function

Lap function

Auto lap function

Countdown function

Auto pause function

Power-saving mode

Button lock function

If you have power sensors

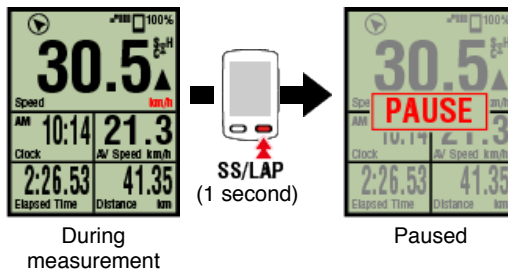
Start measurement

1. Connecting smart computer and smartphone
2. Performing pre-measurement preparation
3. Starting measurement
- 4. Pausing/resuming measurement**

Smart computer

Pressing **SS/LAP** for 1 second displays [PAUSE] and pauses measurement.

Pressing **SS/LAP** again for 1 second resumes measurement.



- 5. Finishing measurement (reset operation)**

- 6. Saving and uploading trips**

• Functions during measurement

Switching measurement data display

Simple navigation function

Lap function

Auto lap function

Countdown function

Auto pause function

Power-saving mode

Button lock function

If you have power sensors

Start measurement

1. Connecting smart computer and smartphone

2. Performing pre-measurement preparation

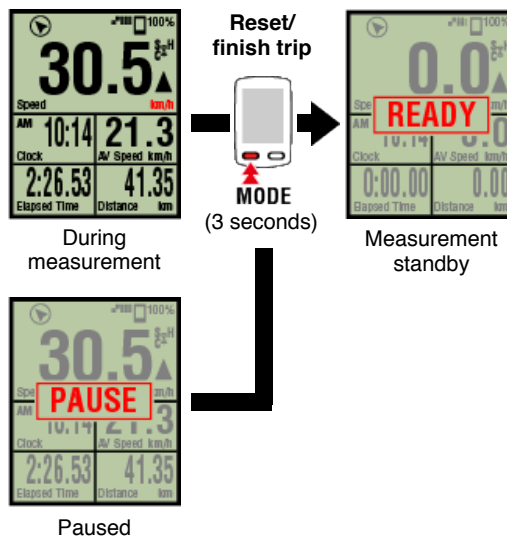
3. Starting measurement

4. Pausing/resuming measurement

**5. Finishing measurement
(reset operation)**

Smart computer

Pressing **MODE** for 3 seconds will end measurement and switch to the [READY] display. At this time, the trip data will be temporarily saved to the smartphone, and the measurements on the smart computer will be reset.



To continue measuring, press SS/LAP for 1 second.

To finish measuring, save and upload the trip data through the smartphone.

[➔ Saving and uploading trips](#)

6. Saving and uploading trips

• Functions during measurement

Switching measurement data display

Simple navigation function

Lap function

Auto lap function

Countdown function

Auto pause function

Power-saving mode

Button lock function

If you have power sensors

Start measurement

1. Connecting smart computer and smartphone

2. Performing pre-measurement preparation

3. Starting measurement

4. Pausing/resuming measurement

5. Finishing measurement
(reset operation)

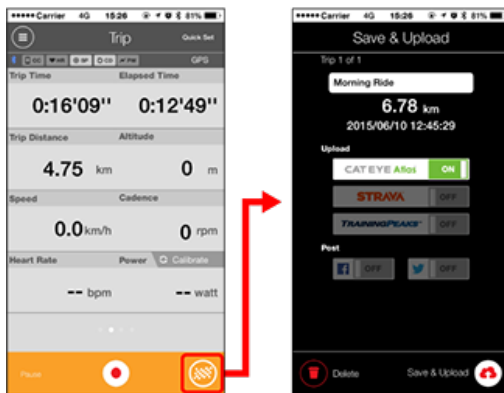
6. Saving and uploading trips

After measurement is complete, the trip can be saved in Cateye Cycling™ and can be uploaded to various service sites.

Smartphone

1. On the Trip screen, tap  (Flag) to finish measurement.

The app switches to the upload screen.




2. Turn on an upload destination.

* Trip names can be edited.


* You must have an account with the relevant site to upload data.


 [Account](#)

* Cateye Cycling™ only allows you to post links of trips uploaded to CATEYE Atlas™ on Facebook™ and Twitter™. Links to other service sites cannot be posted.


3. Tap  (Save & Upload). Trips are saved in Cateye Cycling™ and uploaded to the selected service sites.

* Repeat this action if there are multiple trips.

* Tap  (Delete) to delete a trip.

* Tap  (MENU) > [Activity List] to see the trips saved in Cateye Cycling™.

* When not performing measurement, it is recommended that you turn off [Connect] from

 (MENU) to minimize smartphone battery drain.

● **Functions during measurement**

Switching measurement data display

Simple navigation function

Lap function

Auto lap function

Countdown function

Auto pause function

Power-saving mode

Button lock function

If you have power sensors

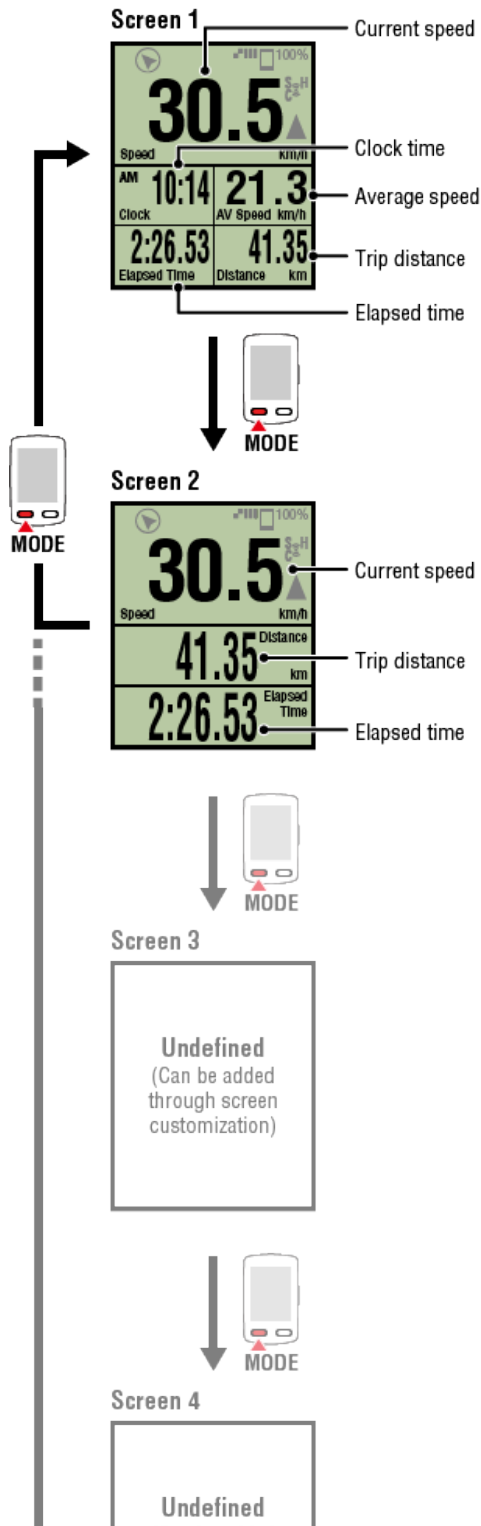
Start measurement

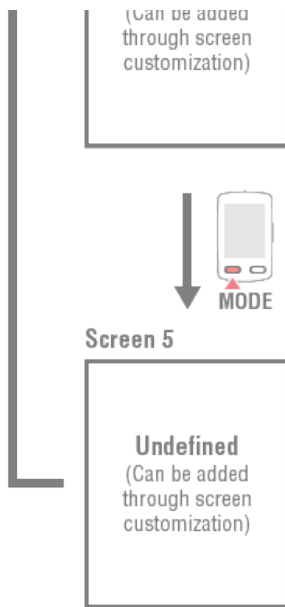
Switching measurement data display


Smart computer

You can switch the display of data being measured in Cateye Cycling™ by pressing **MODE**.

* The data displayed changes depending on the state of the sensor connection and the screen customization settings. The following gives an example of initial configuration of the measurement screen.





* During initial configuration, screens 3 through 5 are undefined and thus not shown. To add screens or to change screen segments or measurement data, tap  (MENU) > [Device] > [Smart computer name] > [Display Customization].

[➔ Changing the measurement screen](#)

* Measurement data will be displayed as [--] if the sensor signal cannot be received.

Simple navigation function
Lap function
Auto lap function
Countdown function
Auto pause function
Power-saving mode
Button lock function
If you have power sensors

Start measurement


Switching measurement data display

Simple navigation function

The Simple navigation function displays the direction and straight-line distance from a current location to a goal or a start point.

Important

- The simple navigation function shows the direction and straight-line distance. It does not provide route (street) guidance.
- The simple navigation function cannot be displayed when screen customization is set to display 7 or 8 screen segments.

* To configure the screen segment settings for the measurement screen, tap  (MENU) > [Device] > [Smart computer name] > [Display Customization].

 [Changing the measurement screen](#)

Display goal

Display the direction and straight-line distance to the goal.

Important

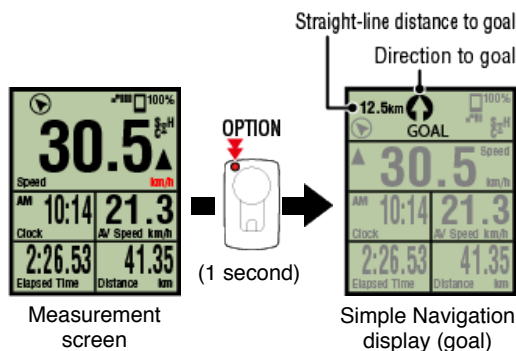
This function cannot be used if no goal is defined.

 [Designating a goal](#)

* Goals can also be set while a trip is being recorded if the smart computer is in the [PAUSE] state.

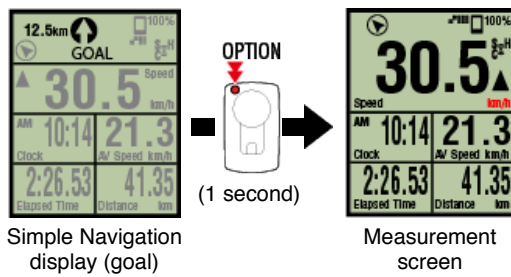
Smart computer

1. Press **OPTION** on the measurement screen for 1 second to show simple navigation (goal) on the upper part of the screen.



Being able to check the direction and straight-line distance to a goal makes it possible to continue travelling without losing sight of the goal.

2. Press **OPTION** for 1 second to return to the measurement screen.



- * Performing the same operation will display the simple navigation (goal) again.
- * To go back to a start point, see "Back to start point".

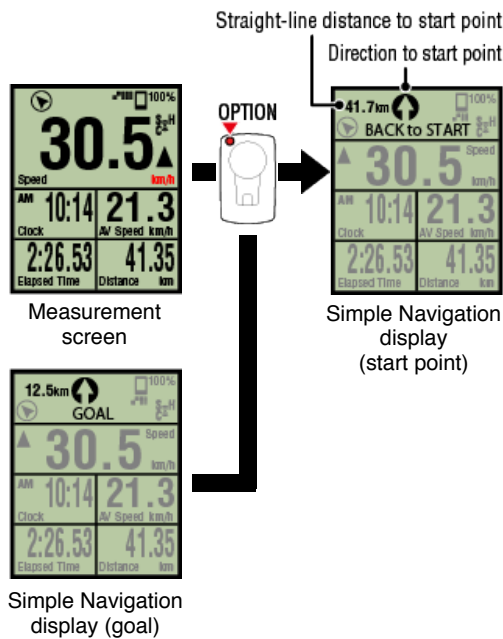
Back to start point

Display the direction and straight-line distance to the start point.

* Because a trip's start point is set automatically, this function can be used right away.

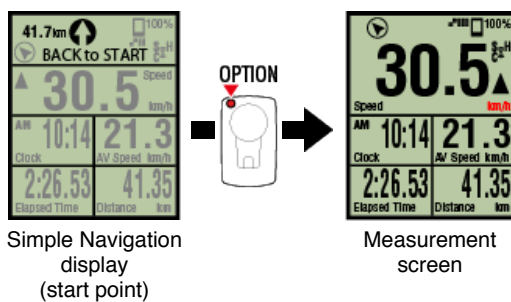
Smart computer

1. Press **OPTION** on the measurement screen or on the simple navigation display (goal) to show simple navigation (back to start point) on the upper part of the screen.



This function allows you to return to a start point while checking the direction and straight-line distance to the start point.

2. Press **OPTION** to return to the measurement screen.



* Performing the same operation will display the simple navigation (start point) again.

Lap function

Auto lap function

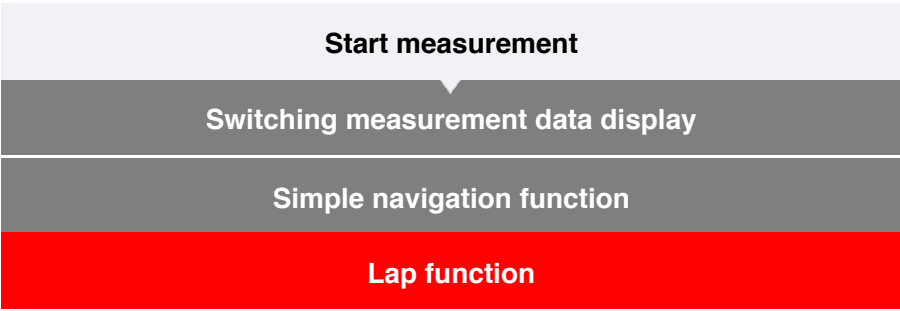
Countdown function

Auto pause function

Power-saving mode

Button lock function

If you have power sensors

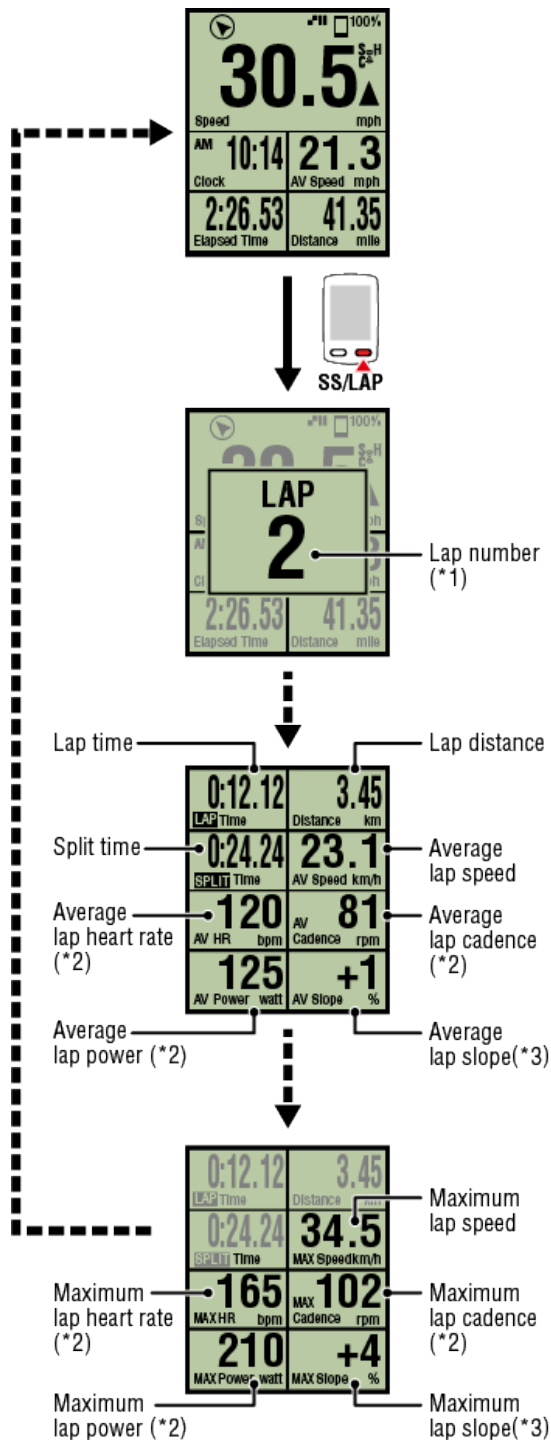


Smart computer

You can record a lap by pressing **SS/LAP** on the measurement screen during measurement. When the lap is recorded, the lap information is displayed temporarily before returning to the original measurement screen.

The displayed lap information is as follows.

* This feature can be used in conjunction with the auto lap function.



*1 The sequential lap number, including auto laps, will be displayed.

If the total number of laps exceeds 999, the following laps will not be recorded.

*2 Measurement data will be displayed as [--] if the sensor signal cannot be received.

*3 Requires a smartphone with a built-in pressure sensor.

Auto lap function

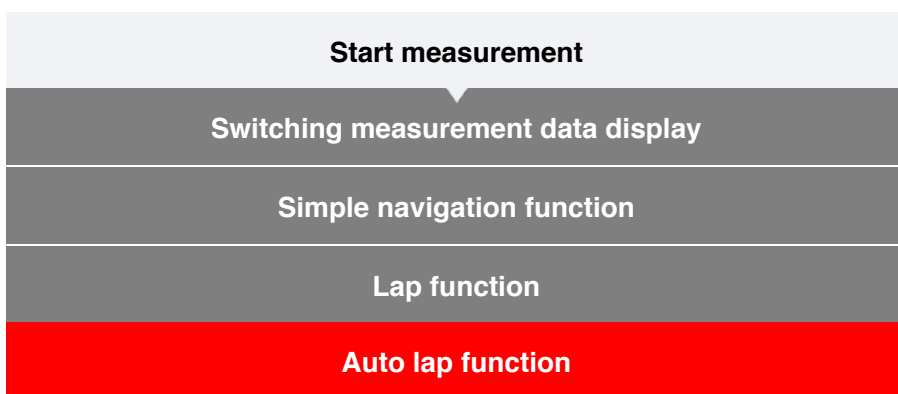
Countdown function

Auto pause function

Power-saving mode

Button lock function

If you have power sensors



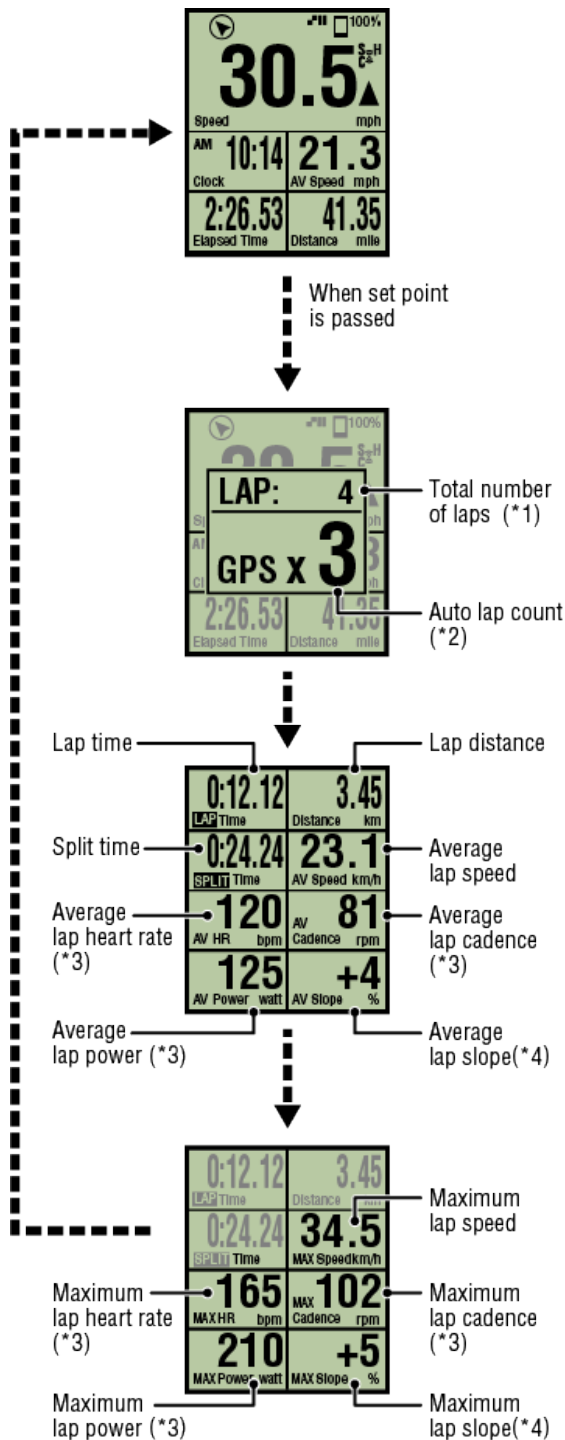
Smart computer

Laps can be recorded automatically without any button operation according to distances, times, or locations set in advance.

When the lap is recorded, the lap information is displayed temporarily before returning to the original measurement screen.

The displayed lap information is as follows.

* This feature can be used in conjunction with the lap function.




*1 A number that includes both the lap number and the auto lap number will be displayed. If the total number of laps exceeds 999, the following laps will not be recorded.

*2 The display shows the measurement status of the auto lap being measured and the lap count.

*3 Measurement data will be displayed as [--] if the sensor signal cannot be received.

*4 Requires a smartphone with a built-in pressure sensor.

* The Auto lap function settings can be accessed by tapping  (MENU) > [General] > [Auto Lap].

 General

Countdown function

Auto pause function

Power-saving mode

Button lock function

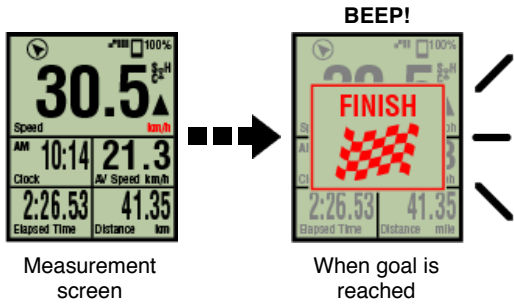
If you have power sensors


Start measurement
Switching measurement data display
Simple navigation function
Lap function
Auto lap function
Countdown function

Smart computer

This function delivers a notification when a distance or time set as a goal is reached. When the goal is reached, [FINISH] flashes on the screen and an alarm sounds.

- Distance: The specified distance is set as the goal.
- Time: The specified time is set as the goal.



* The countdown function settings can be accessed by tapping  (MENU) > [Device] > [Smart computer name] > [Countdown].

 [Device](#)

* The countdown restarts after measurement is finished.

 [Finishing measurement \(reset operation\)](#)

Auto pause function
Power-saving mode
Button lock function
If you have power sensors

Start measurement

Switching measurement data display

Simple navigation function

Lap function

Auto lap function


Countdown function

Auto pause function

Smartphone

This function automatically pauses measurement when the connection between the smartphone and smart computer is broken.

Measurement resumes automatically when the connection is reestablished.

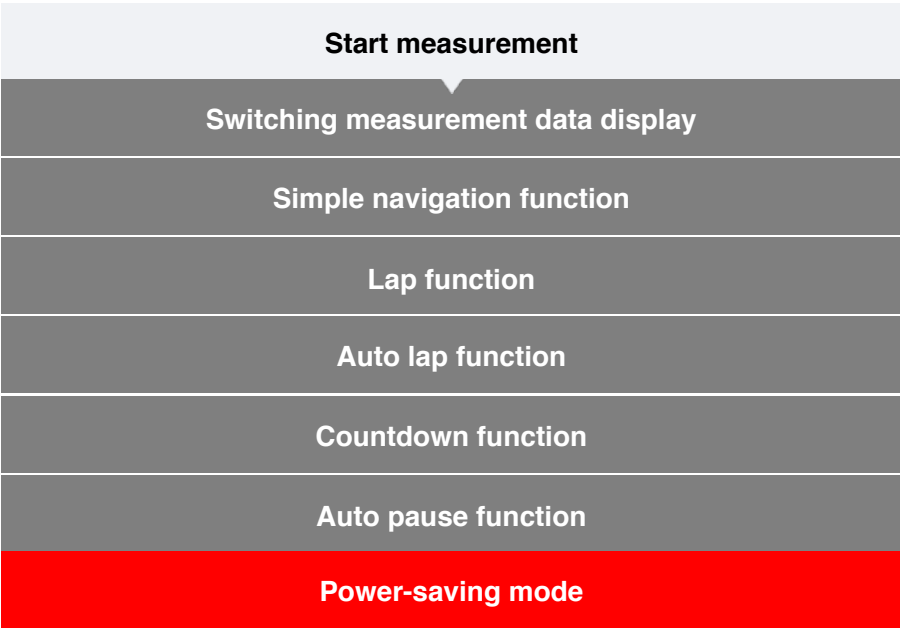
* The Auto Pause settings can be accessed by tapping  (MENU) > [Device].

 [Device](#)

Power-saving mode

Button lock function

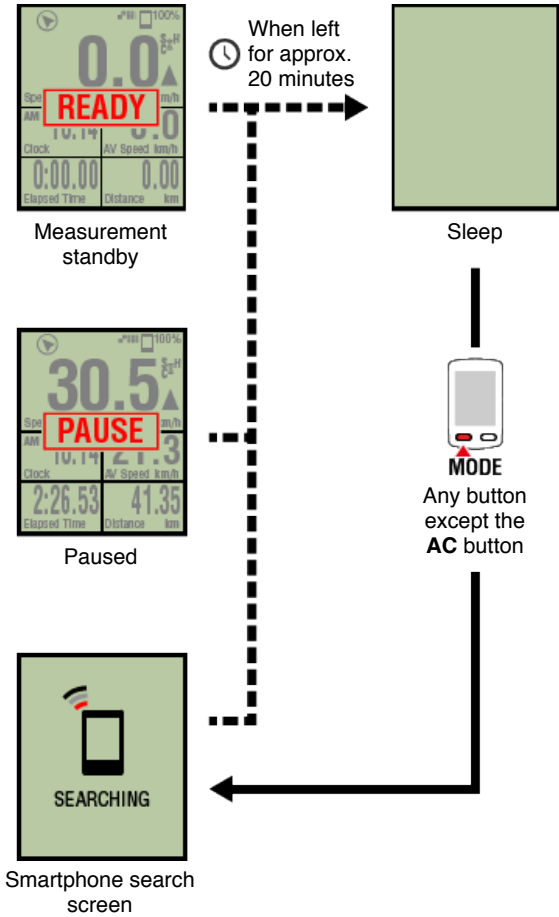
If you have power sensors



Smart computer

When smart computer is left on the [ready] (measurement standby) screen, [PAUSE] screen, or smartphone search screen for approximately 20 minutes; Cateye Cycling™ is closed; or [Connect] is turned off, the sleep display is activated.

When any button is pressed, the smart computer returns to the smartphone search screen and then returns to the measurement screen when the connection with the smartphone is reestablished.



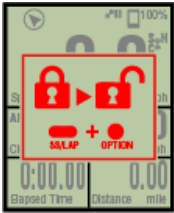
Button lock function

If you have power sensors

Start measurement
Switching measurement data display
Simple navigation function
Lap function
Auto lap function
Countdown function
Auto pause function
Power-saving mode
Button lock function

Smart computer

Pressing **SS/LAP** and **OPTION** simultaneously will lock the buttons, preventing accidental operation when the smart computer is stored in a pocket, etc.
 Repeating the same operation will unlock the buttons.



Button lock



Lock/unlock buttons

If you have power sensors

Start measurement
Switching measurement data display
Simple navigation function
Lap function
Auto lap function
Countdown function
Auto pause function
Power-saving mode
Button lock function
If you have power sensors

When a signal is received from a paired power sensor, power data is displayed as a value.

Smart computer

The power, average power, custom average power, maximum power, average lap power in real time, and power balance can be displayed on a smart computer.

- * Separate left and right power sensors are necessary for power balance measurement.
- * To display power data on the measurement screen, it is necessary to register functions (measurement data) by tapping (MENU) > [Device] > [Smart computer name] > [Display Customization].

[➔ Changing the measurement screen](#)

- * Tap (MENU) > [Device] > [Smart computer name] > [Custom Average Power] to specify the calculated number of seconds for the custom average power.

[➔ Device](#)

Smartphone

Only current power can be viewed on a smartphone.



Power

- * When the power value exceeds 999, the last three digits are displayed.
- * To increase precision, it is recommended to perform calibration before power measurement.

[➔ Power sensor calibration](#)

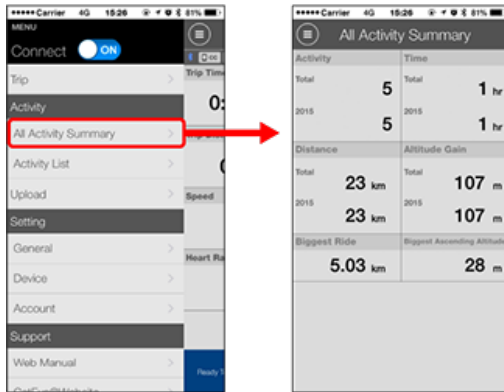
Usage Instructions

All activity summary

It is possible to check total values for all activities saved in Cateye Cycling™ and maximum values for individual trips.

Smartphone

1. Tap  (MENU) and then [All Activity Summary].



Activity list

Uploading

Usage Instructions

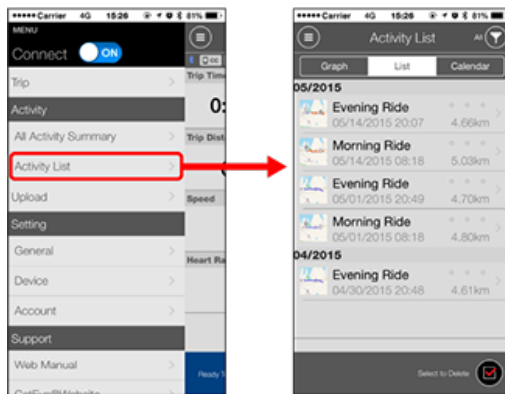
All activity summary

Activity list


It is possible to check individual activities (trip data and summary data collectively) saved in Cateye Cycling™.


Smartphone

1. Tap  (MENU) and then [Activity List].

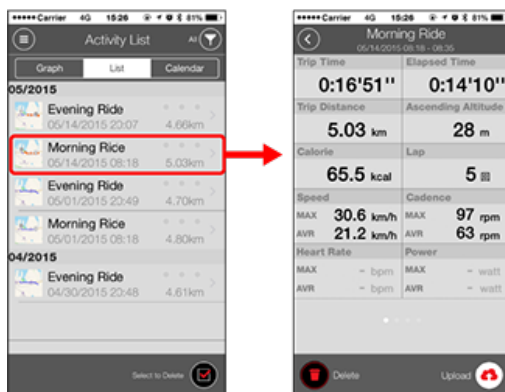


* The Activity List can be displayed in graph, list, or calendar format.

* Tapping  (Select to Delete) moves to the activity deletion screen.

Select the activities you want to delete and tap  (Delete).

2. Tap each activity to check details or upload/delete it.



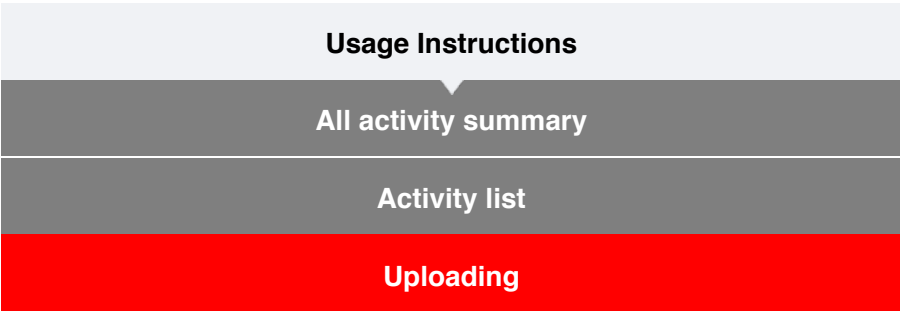
•  (Upload) :

Upload to service sites

•  (Delete) :


Delete activity

Uploading

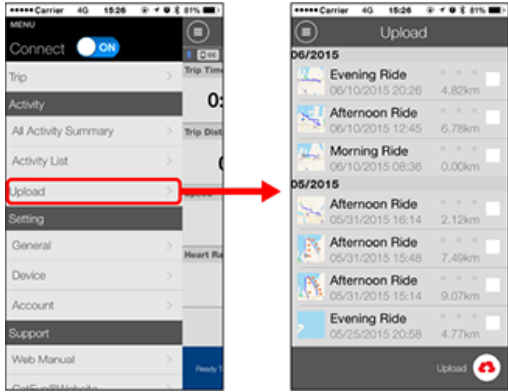


Multiple activities can be uploaded to service sites in one action.

Smartphone


1. Tap  (MENU) and then [Upload].

* Activities already uploaded to service sites are not displayed.



2. Select the activities you want to upload and tap  (Upload) to upload them to the specified sites.

* You must have an account with the relevant site to upload data.

* The upload destinations for Upload All are those sites turned on under  (MENU) > [Account].

 [Account](#)

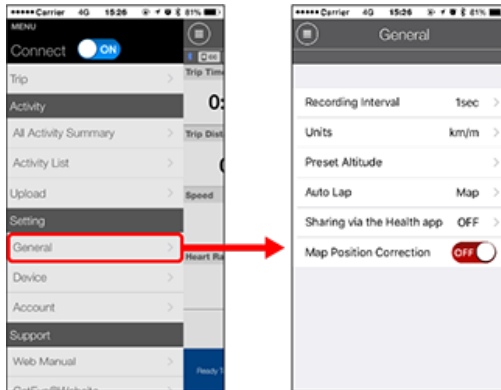
Usage Instructions

General

This section explains how to configure various measurement settings.

Smartphone

1. Tap (MENU) and then [General].



- **Recording Interval**

Selects the interval at which the log is recorded.

- **Units**

Selects the measurement unit.

Important

If the unit is changed with the smart computer unconnected, the settings will be applied the next time the smart computer is connected.

- **Preset Altitude**

Applies a preset to the altitude of a specified position such as your home.

Turning Preset Altitude ON will correct the altitude at the start point of the measurement, improving the reliability of the altitude measurement.

* The iPhone 6 and other smartphones with high-accuracy altitude measurement capabilities do not require an altitude preset.

- **Auto Lap**

Selects which method—distance, time, or map—to use for automatic lap input.

* Designating a point on the map:

To Designate a point, press and hold on the desired location on the map.

- **Sharing via the Health app (iPhone Only)**

Sends measurement data to the iPhone's healthcare app.

- **Map Position Correction (iPhone Only)**

[Map Position Correction] is a function for correcting map position offsets in China.

In countries other than China, turning [Map Position Correction] ON results in offset route positions being displayed in the activity list. Turning this function OFF corrects the offset positions.

Device

Account

Usage Instructions

General

Device


The following section explains how to pair a smart computer with a sensor and how to configure various settings.

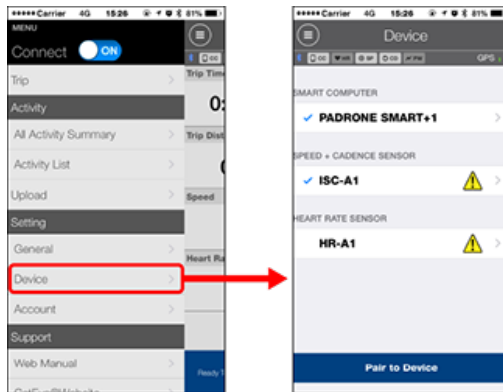
Important

- Device settings are shared when smart computer is connected to your smartphone.
- When using an iPhone, you cannot sync settings of commercial sensors.
When measuring in Sensor Direct Mode, it is necessary to configure sensor settings separately via smart computer.

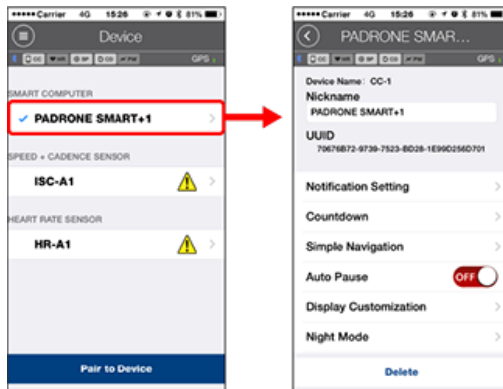
- ➔ 1. Switching to Sensor Direct Mode
2. Pairing a smart computer with a sensor
3. Tire circumference setting

Smartphone

1. Tap  (MENU) and then [Device].



Changing smart computer settings




- **Nickname**
Changes the name of the smart computer.

- **Notification Setting**

Configures settings for incoming call, email, and SMS app notifications and smartphone remaining battery notification.

Important

 Only incoming notifications for e-mail addresses registered through [Phone] and [Add Account] will be displayed.
When an incoming notification is received, the display will not show the app name or the name of the sender.

 [Configuring Incoming Notifications](#)

- **Countdown**

Sets a distance or a time as a goal.

- **Simple Navigation**

Designates a goal in simple navigation.

 [Designating a goal](#)

- **Auto Pause**

This function automatically pauses measurement when the connection between smart computer and your smartphone is interrupted if you move away from the bicycle with your smartphone during measurement.

- **Display Customization**

Lets you select the measurement screens to add or delete in addition to the screen segments and functions (measurement data) to be displayed on each screen.

 [Changing the measurement screen](#)

- **Night Mode**

Configures when to start and end backlight illumination.

When Night Mode is ON, pressing any button on the smart computer during the specified time will turn the backlight on.

- **Sounds**

Lets you turn the operation sounds, alert sounds, and notification sounds on or off.

- **Compass**

Lets you select whether to show or hide the compass on the measurement screen.

- **Odometer**

Lets you manually set total distance traveled.

* Use this function when you want to continue from the same distance after purchasing a new smart computer or when resetting smart computer.

- **Function Names**

Lets you select between [Abbreviated] or [Full] for displaying measurement data names on the measurement screen.

(Ex.) Abbreviated display for trip distance: DST

Full display for trip distance: Distance

- **Custom Average Power**

Sets the number of seconds for calculating average power to your preferences.

* Custom average power measurements require pairing with a power sensor.

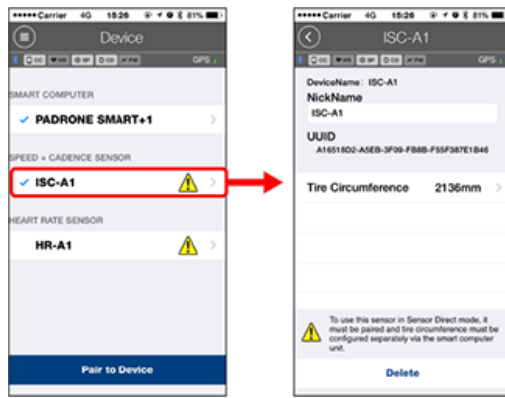
- **Firmware Update**

Updates the smart computer firmware to the most recent version.

Changing sensor settings

Important

These settings can be configured even when your smartphone is not connected to smart computer.
If settings differ between devices, they will be overwritten with data from Cateye Cycling™ the next time the devices are connected.
* Information on commercial sensors paired with the smart computer remains as it is.



- **Nickname**

Changes the name of the sensor.

* Paired sensors are displayed with "A" or "C" after the sensor name.

A : Sensor paired with Cateye Cycling™

C : Sensor paired with a smart computer

- **Tire Circumference (only with a sensor capable of speed measurement)**

Set the tire circumference for a sensor capable of speed measurement.

Select the tire circumference according to the tire size written on the side of the tire.

[➔ Determining tire circumference](#)

* Default value: 2096 mm (700x23C)

* Requires to set tire circumference for each sensor.

* See the following for pairing with a smart computer or a sensor.

[➔ Pairing with smart computer](#)

[➔ Pairing with a sensor](#)

Account

Device

Configuring Incoming Notifications

Notifications from smartphone applications and the smartphone's remaining battery can be displayed on the smart computer.

Important

- Cateye Cycling notification settings are applied to applications enabled in the smartphone's notification settings.
- Email notifications are shown for e-mail accounts registered in the smartphone settings.


! iPhone

Only incoming notifications for e-mail addresses registered through [Phone] and [Add Account] will be displayed.

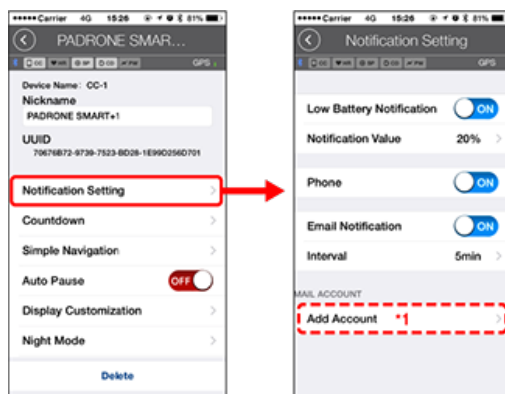
When an incoming notification is received, the display will not show the app name or the name of the sender.

Changing settings on an iPhone


Smartphone

Tap  (MENU) > [Device] > [Smart computer name], and then follow the procedure below.



1. Tap [Notification Setting].



• Low Battery Notification


When the smartphone battery reaches a specified amount,  100% (remaining smartphone battery) flashes on the smart computer.

• Phone / Email :

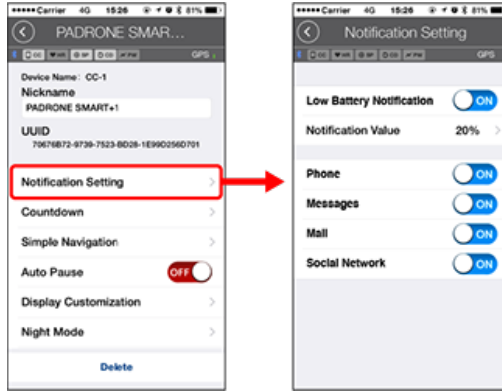
When a notification arrives, [Phone] or [Mail] flashes on the smart computer's screen, with an audible alarm. After the notification closes,  /  (incoming call/email notification icon) will flash.

*1: It is necessary to configure email account settings to receive incoming notification.


Smartphone

Tap  (MENU) > [Device] > [Smart computer name], and then follow the procedure below.

1. Tap [Notification Setting].



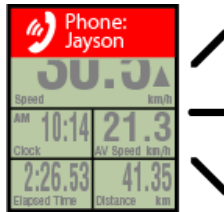
• Low Battery Notification

When the smartphone battery reaches a specified amount,  100% (remaining smartphone battery) flashes on the smart computer.

• Phone / Messages / Email / Social Network

When a notification arrives, [Application name] and [Contact name] (alphabetical), or [Phone number] or [Email address] flashes on the smart computer's screen, with an audible alarm.

BEEP! BEEP! BEEP!



* Contact name registered with non-alphabet characters will be displayed as "Other".

After the notification closes,  /  /  (incoming notification icon) and the notification count will flash.



* The incoming notification icons and count cannot be displayed when screen customization is set to display 8 screen segments.


* The incoming notification icons and count are reset when measurement is paused, reset, or finished.

Device

Designating a goal

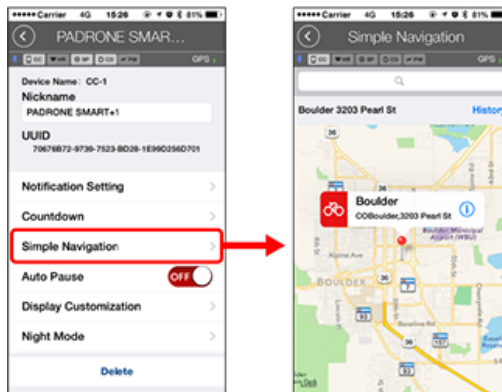
The following explains how to designate a goal in simple navigation.

Smartphone

Tap  (MENU) > [Device] > [Smart computer name], and then follow the procedure below.

1. Tap [Simple Navigation].

Under [Simple Navigation], there are four methods for designating a goal.




- **Enter the address:**
Enter an address in the search field.
- **Select from a map:**
Swipe the map to move the location, and long-press to confirm.
- **Select from an iPhone contact:**
Tap [History] > [Select from Contacts] to select a goal from the addresses of your registered contacts.
- **Select from history:**
Tap [History] to select a goal from the history list.

Device

Changing the measurement screen

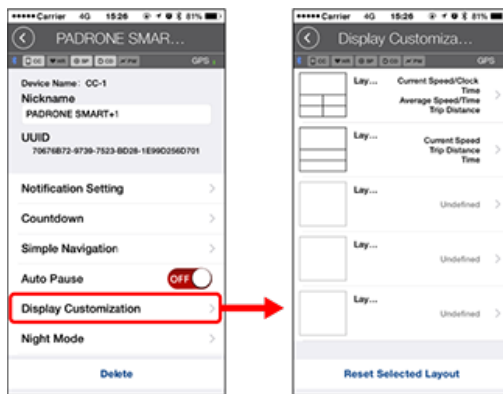
This section explains how to change the display of the measurement screen.

Smartphone

Tap  (MENU) > [Device] > [Smart computer name], and then follow the procedure below.

1. Tap [Display Customization].

Here, you can verify the current screen segments and functions (measurement data).

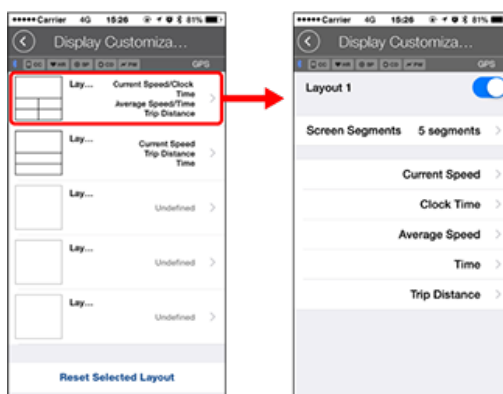


- **Changing the order of screens 1 through 5:**

Tap [Edit] and swipe the desired screen to change the order.

2. Tap a screen to change how it is displayed.

Select the measurement screens to show or hide and the screen segments and functions (measurement data) to be displayed.



- **Displaying/hiding the measurement screen**

If the screen display is set to ON, that measurement screen will be displayed.

If it's set to OFF, that screen will not be displayed.

- **Selecting screen segments:**


Tap [Screen Segments] to select between [None] and [8 segments].

* The simple navigation function cannot be displayed when [Screen Segments] is set to [7 segments] or [8 segments].

* The incoming notification icons and count cannot be displayed when [Screen

Segments] is set to [8 segments].

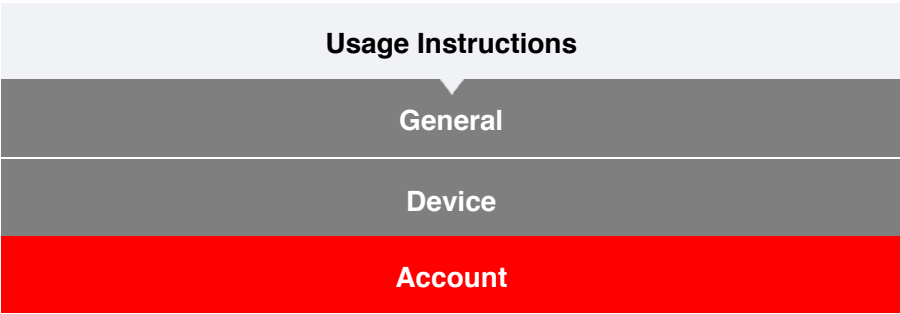
- **Selecting a function (measurement data):**

Tap [Function Names] or  to select a function.


- **Reordering functions:**

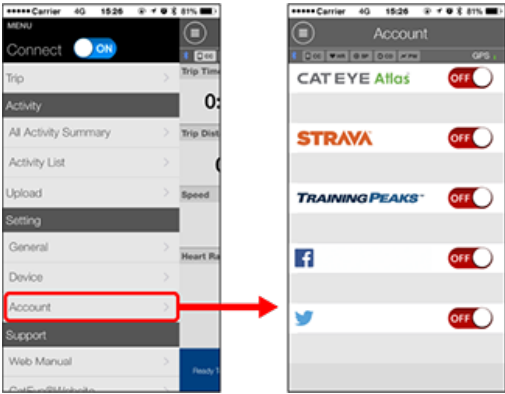
Tap [Edit] and swipe the desired function to another location to change the display position.

* Screen customization settings will be applied to both Mirror Mode and Sensor Direct Mode.



Set up the service sites and social networking services (SNSs) to upload your activities.

1. Tap  (MENU) and then [Account].



Adjust settings for the service sites below.

* You must have an account with the relevant site to upload data.

Service sites

- [CATEYE Atlas™](#)
- STRAVA™

* When entering an account, do not use [Log in using Google]. Instead, enter your email address to log in to STRAVA.

- TRAINING PEAKS™

SNS

- Facebook™
- Twitter™

* When using an SNS, links to activities uploaded to Cateye Atlas™ are posted.

Usage Instructions

You can use smart computer in mirror mode or sensor direct mode depending on your preferences or the situation.

Important Information for iPhone Users

Mirror Mode and Sensor Direct Mode functions and display details

Mirror Mode

Sensor Direct Mode

What is Sensor Direct Mode?

About screen displays

Smart computer screen

Start measurement

Viewing activities

With Cateye Cycling™, you can check and manage trip and summary data (called "activities").

All activity summary

Activity list

Uploading

Changing settings

Cateye Cycling™ can be used to configure all settings for smart computer and connected devices.

* Only sensor pairing settings can be configured with just the smart computer.

Important

- Sensor information on the smart computer is overwritten with data from Cateye Cycling™ when the smart computer connects to the smartphone.
- * Information on commercial sensors paired with the smart computer remains as it is.

• When using an iPhone, you cannot sync settings of commercial sensors.
When measuring in Sensor Direct Mode, it is necessary to configure sensor settings separately via smart computer.

- ➔ 1. Switching to Sensor Direct Mode
2. Pairing a smart computer with a sensor
3. Tire circumference setting

General

Device

Account

Usage Instructions

Important Information for iPhone Users

Important


Currently, some restrictions on functions that can be used with Padrone Smart+ apply to Cateye Cycling™ for iPhone.

These functions will become available through updates to the Padrone Smart+ firmware and the Cateye Cycling™ app.

It is recommended that users update to the most recent version of Cateye Cycling™ and Padrone Smart+ firmware whenever possible.

* Areas relevant to the above are described with the  mark.

Updating the firmware:

With the smart computer connected to the iPhone, tap  (MENU) > [Device] > [Smart computer name] > [Update Firmware].

Usage Instructions

Functions and details displayed in Mirror Mode and Sensor Direct Mode

The following functions can be used in Mirror Mode and Sensor Direct Mode.

Measured data and functions	Mirror Mode		Sensor Direct Mode
	CC	App	
Measurements			
Current speed	OK	OK	OK
Average speed	OK	NO	OK
Maximum speed	OK	NO	OK
Trip distance	OK	OK	OK
Total distance	OK	NO	OK
Countdown distance	OK	NO	NO
Elapsed time	OK	OK	OK
Trip time	OK	OK	NO
Countdown time	OK	NO	NO
Cadence	OK*1	OK*1	OK*1
Average cadence	OK*1	NO	OK*1
Maximum cadence	OK*1	NO	OK*1
Heart rate	OK*1	OK*1	OK*1
Average heart rate	OK*1	NO	OK*1
Maximum heart rate	OK*1	NO	OK*1
Power	OK*1	OK*1	OK*1
Average power	OK*1	NO	OK*1
Maximum power	OK*1	NO	OK*1
Custom average power	OK*1	NO	NO
Power balance	OK*2	NO	OK*2
Date	OK	NO	OK
Clock time	OK	NO	OK
Calorie consumption	OK	NO	NO
Altitude	OK	NO	NO
Ascending altitude	OK	NO	NO
Total altitude	OK	NO	NO
Slope angle	OK*3	NO	NO
Maximum slope	OK*3	NO	NO
Average slope	OK*3	NO	NO
Notifications			
Incoming phone, SMS (Text) and email application notifications	OK	NO	NO
Function			
Compass	OK	NO	NO
Simple navigation function	OK	NO	NO
Lap function	OK	NO	NO
Auto lap function	OK	OK	NO
Countdown function	OK	NO	NO
Auto pause function	OK	NO	NO
Recording			
Route	NO	OK	NO
Graph	NO	OK	NO
Lap	NO	OK	NO

*1 Heart rate, cadence, and power measurements require pairing with each sensor.

*2 Requires separate left and right power sensors.

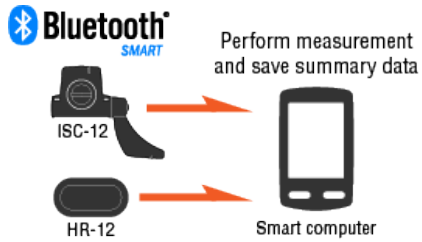
*3 Requires a smartphone with a built-in pressure sensor.

Usage Instructions

What is Sensor Direct Mode?

Sensor Direct Mode refers to using smart computer as a regular cyclocomputer without your smartphone.

In this case, Smart computer measures by receiving signals directly from each sensor (speed, cadence, heart rate, and power).



The Bluetooth word mark and logos are owned by the Bluetooth SIG, Inc. and any use of such marks by CATEYE Co., Ltd. is under license. Other trademarks and trade names are those of their respective owners.

Measurement results such as elapsed time and trip distance (summary data) can be forwarded to a smartphone via Cateye Cycling™ and uploaded to a service site such as CATEYE Atlas™.

* Trip logs cannot be recorded in Sensor Direct Mode.

* When using an iPhone, you cannot sync settings of commercial sensors.

When measuring in Sensor Direct Mode, it is necessary to configure sensor settings separately via smart computer.

1. Switching to Sensor Direct Mode
2. Pairing a smart computer with a sensor
3. Tire circumference setting

Smart computer screen

Usage Instructions

What is Sensor Direct Mode?


Smart computer screen

The screen segments and display functions to be displayed on the measurement screen can be assigned through screen customization.

The following explains about customizable display, using the default screen as an example.



Measurement screen


* To customize the screen, tap  (MENU) > [Device] > [Smart computer name] > [Display Customization].

[➔ Changing the measurement screen](#)

① Explanation of icons:

(Night Mode)

Turns on when the Night Mode setting is ON.

* The Night Mode settings can be accessed by tapping  (MENU) > [Device] > [Smart computer name].

[➔ Device](#)

(Smart computer battery alarm)

Flashes when the smart computer's remaining battery power is low. Replace battery as soon as possible.

[➔ Battery Replacement : Smart computer](#)

(Sensor signal icon)

Indicates the Bluetooth® sensor's signal reception status.

• Types of icons:

S (Speed signal)

Indicates the speed sensor signal.

C (Cadence signal)

Indicates the cadence sensor signal.

S / C (S and C displayed simultaneously)

Indicates the speed (cadence) sensor (ISC) signal.

H (Heart rate signal)

Indicates the heart rate sensor signal.

P (Power signal)

Indicates the power sensor signal.

• Icon states:

Flashing

Signal being received in Sensor Direct Mode

Off

No signal

▲▼ (Pace arrows)

Indicate whether the current speed is faster (▲) or slower (▼) than the average speed.

km/h · m/h · rpm · bpm (measurement unit)

Displays the currently selected measurement unit.

• **On**

Measurement stopped

• **Flashing**

Measurement in progress

② **Measurement screen**

Displays various measurement data.

• Speed/cadence/heart rate flash:

If using a CATEYE sensor, the values related to the sensor's battery replacement period start flashing to indicate that it is time to replace the battery.

 [Battery replacement : Optional sensors](#)

• Power values flash:

When using separate left and right power sensors, power values flash on and off to indicate that only signals from one sensor are being received.

Usage Instructions

Start measurement

This section explains the measurement flow and the measurement functions.

1. Switching to Sensor Direct Mode

2. Starting/stopping measurement

3. Saving measurement data (reset operation)

4. Importing summary data

- **Functions during measurement**

Switching measurement data display

Power-saving mode

Button lock function

If you have power sensors

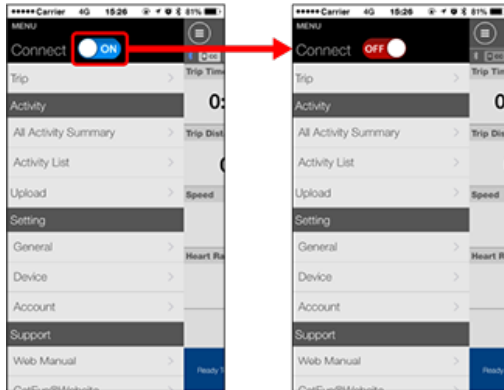
Start measurement

1. Switching to Sensor Direct Mode

Switch from Mirror Mode to Sensor Direct Mode.

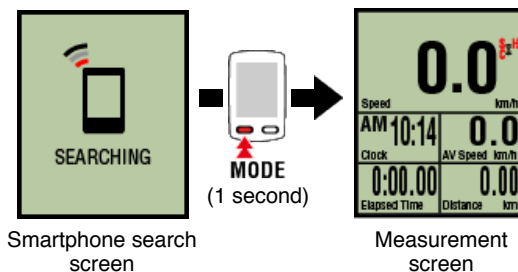
Smartphone

1. Close Cateye Cycling™ or from  (MENU), turn off [Connect].



Smart computer

2. From the smartphone search screen, press **MODE** for 1 second to switch to Sensor Direct Mode.



* Smart computer will search for a sensor instead of your smartphone. In this mode, the sensor icon flashes to indicate sensor reception status.

- **S** (Flash): When the speed signal is received
- **C** (Flash): When the cadence signal is received
- **S/C** (**S** and **C** flash simultaneously): When the speed/cadence (ISC) sensor signal is received
- **H** (Flash): When the heart rate signal is received
- **P** (Flash): When the power signal is received

Important

Sensor Direct Mode and Mirror Mode measure independently and data has no continuity.

2. Starting/stopping measurement

3. Saving measurement data

(reset operation)

4. Importing summary data

● **Functions during measurement**

Switching measurement data display

Power-saving mode

Button lock function

If you have power sensors

Start measurement

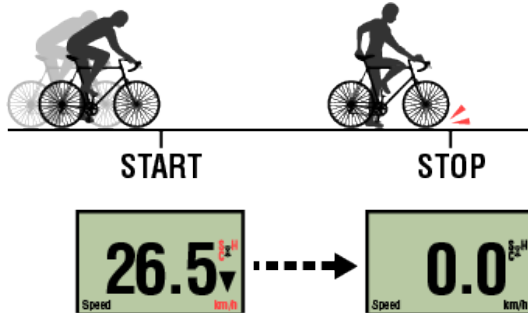
1. Switching to Sensor Direct Mode

2. Starting/stopping measurement

Smart computer

Measurement starts automatically when the bicycle moves.

During measurement the measurement unit flashes.



* The pause function is not available in Sensor Direct Mode.

3. Saving measurement data (reset operation)

4. Importing summary data

● Functions during measurement

Switching measurement data display

Power-saving mode

Button lock function

If you have power sensors

Start measurement

1. Switching to Sensor Direct Mode

2. Starting/stopping measurement

3. Saving measurement data (reset operation)

Smart computer

Pressing and holding **MODE** when on the measurement screen generates measurement data as summary results and resets measurement data to 0.

* When **MODE** has been pressed for 1 second, a smartphone search screen appears, but you should continue to hold down the button.

* Total Distance (**Odo**) cannot be reset.

* The summary data generated is loaded into the smartphone.

[➔ Importing summary data](#)



Important

The maximum number of trips that smart computer can save temporarily is 30. If this number is exceeded, the **M MEMORY FULL** appears on the screen, and the oldest summary data is deleted when smart computer is reset.

Frequent importing of summary data to a connected smartphone is recommended.

! iPhone

Currently, summary data cannot be generated for trips less than 3 minutes long.

4. Importing summary data

●Functions during measurement

Switching measurement data display

Power-saving mode

Button lock function

If you have power sensors

Start measurement

1. Switching to Sensor Direct Mode

2. Starting/stopping measurement

3. Saving measurement data
(reset operation)

4. Importing summary data

You can send summary data accumulated in smart computer (measurement results of sensor direct mode) to your smartphone.

Important

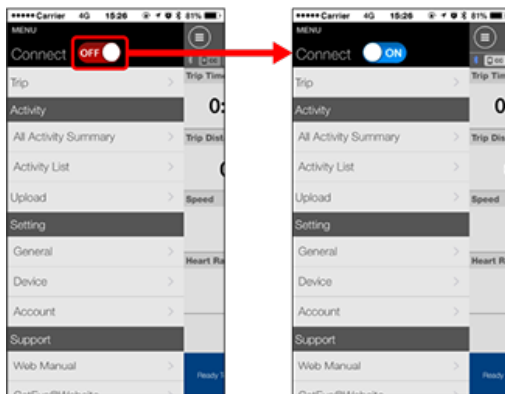
Before importing summary data, always finish smart computer measurement (reset operation).

You cannot import data for which measurement has not finished.

[Saving measurement data \(reset operation\)](#)

Smartphone

1. Launch Cateye Cycling™, and from  (MENU) turn on [Connect].



Smart computer

2. On the measurement screen, press **MODE** for 1 second to display the smartphone search screen and connect with your smartphone.

When smart computer connects to a smartphone, it switches to the measurement standby display.



Smartphone search screen



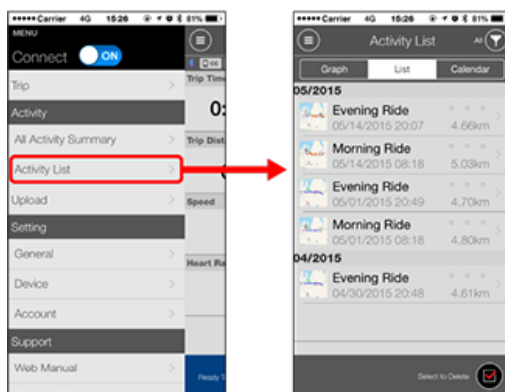
Measurement standby


* The appearance of the smart computer screen depends on the state of Cateye Cycling™.

* It is not possible to import data while measuring with Cateye Cycling™.

Smartphone


3. Tap (MENU) and then [Activity List].



If there is summary data in smart computer, the  (Import from CC) is displayed.

Tapping the button imports summary data to your smartphone and updates the activity list.

* This action deletes summary data from smart computer.

* After importing summary data, it is recommended that you turn off [Connect] from  (MENU) to minimize smartphone battery drain.

●Functions during measurement

Switching measurement data display

Power-saving mode

Button lock function

If you have power sensors

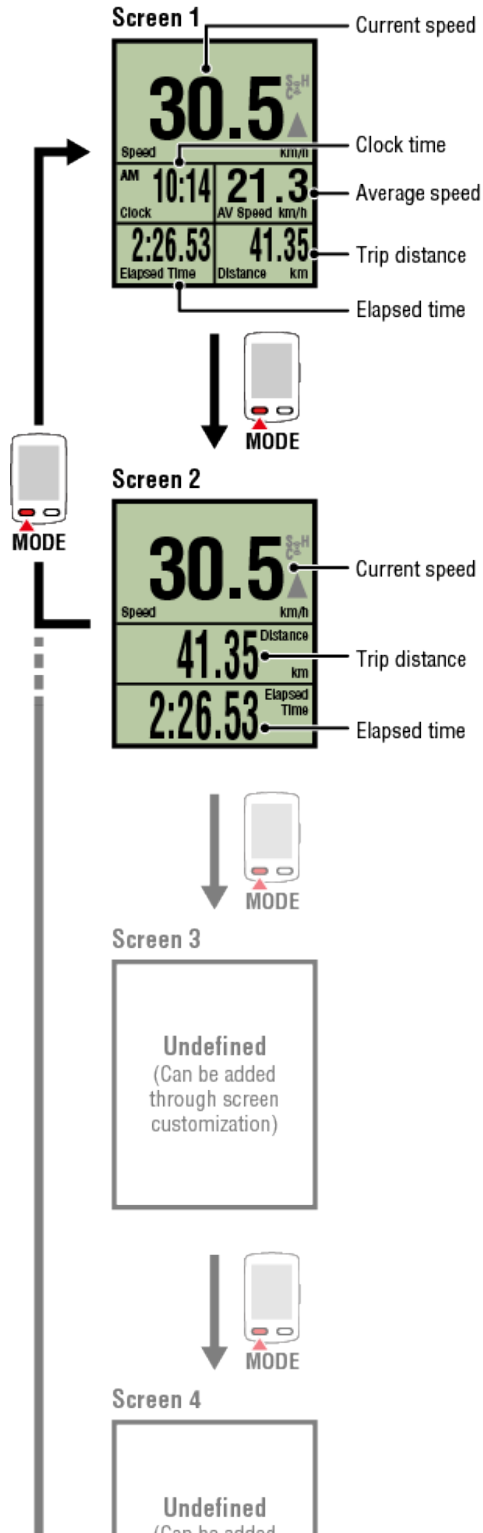
Start measurement

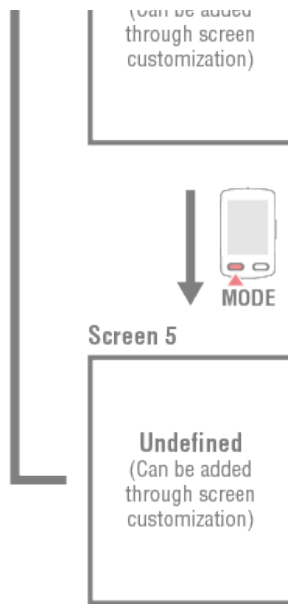
Switching measurement data display


Smart computer

Pressing **MODE** switches the measurement data displayed at the bottom of the screen.

* The data displayed changes depending on the state of the sensor connection and the screen customization settings. The following gives an example of initial configuration of the measurement screen.





* During initial configuration, screens 3 through 5 are undefined and thus not shown. To add screens or to change screen segments or measurement data, tap  (MENU) > [Device] > [Smart computer name] > [Display Customization].

[➔ Changing the measurement screen](#)

* Measurement data and lap-related data that require use of the smartphone's GPS will not be displayed in Sensor Direct Mode.

[➔ Functions and details displayed in Mirror Mode and Sensor Direct Mode](#)

* Measurement data will be displayed as [--] if the sensor signal cannot be received.

* Average values are displayed as .E instead of the measurement value when Elapsed Time exceeds approximately 1000 hours. Average speed is also displayed as .E instead of the measurement value when Trip Distance exceeds 10000 km [6200 mile].
Reset smart computer and start measurement again to enable average value measurement.

[➔ Saving measurement data \(reset operation\)](#)

Power-saving mode

Button lock function

If you have power sensors

Start measurement

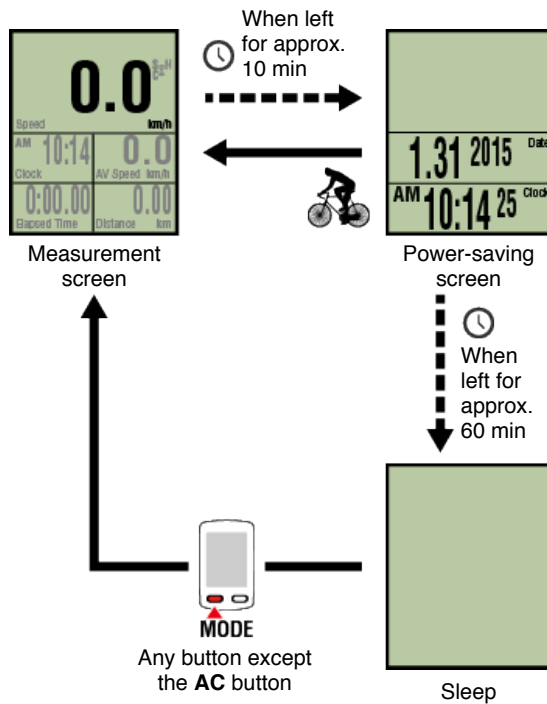
Switching measurement data display

Power-saving mode

Smart computer

If there is no sensor signal nor button operation for 10 minutes, the power-saving screen is activated. If such a state continues for a further hour, the sleep display is activated.

The power-saving screen returns to the measurement screen when the bicycle starts moving.



Button lock function

If you have power sensors

Start measurement

Switching measurement data display

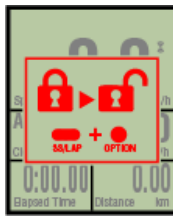
Power-saving mode

Button lock function

Smart computer

Pressing **SS/LAP** and **OPTION** simultaneously will lock the buttons, preventing accidental operation when the smart computer is stored in a pocket, etc.

Repeating the same operation will unlock the buttons.



Button lock



Lock/unlock buttons

SS/LAP + OPTION



If you have power sensors

Start measurement
Switching measurement data display
Power-saving mode
Button lock function
If you have power sensors

When a signal is received from a paired power sensor, power data is displayed as a value.

Smart computer

The power, average power, custom average power, maximum power, average lap power in real time, and power balance can be displayed on a smart computer.

- * Separate left and right power sensors are necessary for power balance measurement.
- * To display power data on the measurement screen, it is necessary to register functions (measurement data) by tapping  (MENU) > [Device] > [Smart computer name] > [Display Customization].
 - ➔ [Changing the measurement screen](#)
- * Tap  (MENU) > [Device] > [Smart computer name] > [Custom Average Power] to specify the calculated number of seconds for the custom average power.
 - ➔ [Device](#)
- * To increase precision, it is recommended to perform calibration before power measurement. Perform calibration using Cateye Cycling™, making sure to first connect a smartphone.
 - ➔ [1. Connecting smart computer and smartphone](#)
 - ➔ [2. Power sensor calibration](#)

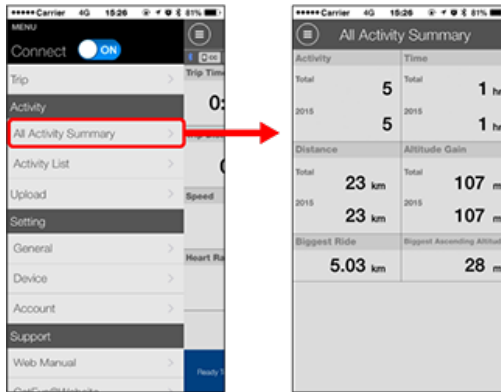
Usage Instructions

All activity summary

It is possible to check total values for all activities saved in Cateye Cycling™ and maximum values for individual trips.

Smartphone

1. Tap  (MENU) and then [All Activity Summary].



Activity list

Uploading

Usage Instructions

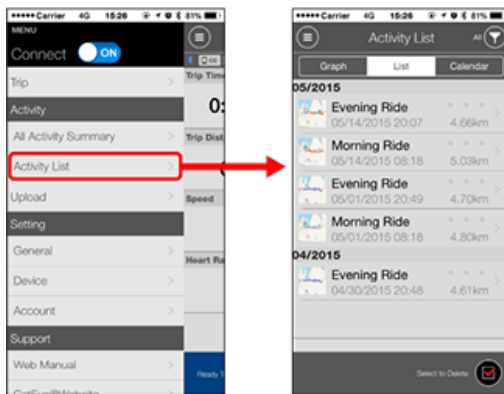
All activity summary

Activity list



It is possible to check individual activities (trip data and summary data collectively) saved in Cateye Cycling™.

Smartphone

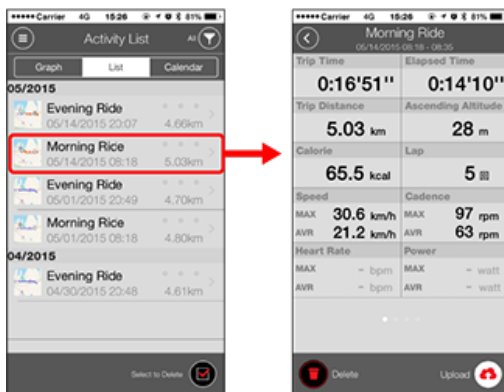
1. Tap  (MENU) and then [Activity List].



* The Activity List can be displayed in graph, list, or calendar format.

* Tapping  (Select to Delete) moves to the activity deletion screen.
Select the activities you want to delete and tap  (Delete).

2. Tap each activity to check details or upload/delete it.



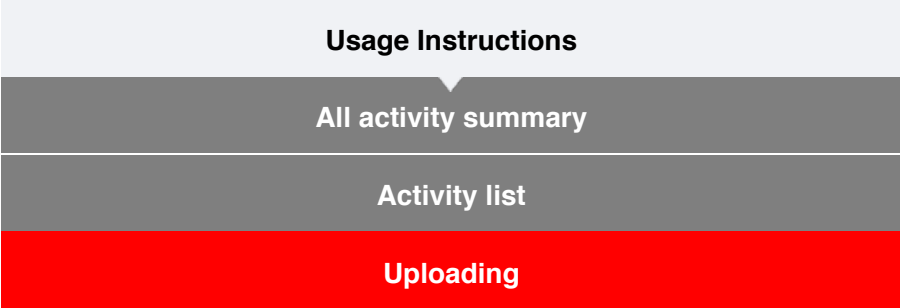
•  (Upload) :

Upload to service sites

•  (Delete) :


Delete activity

Uploading

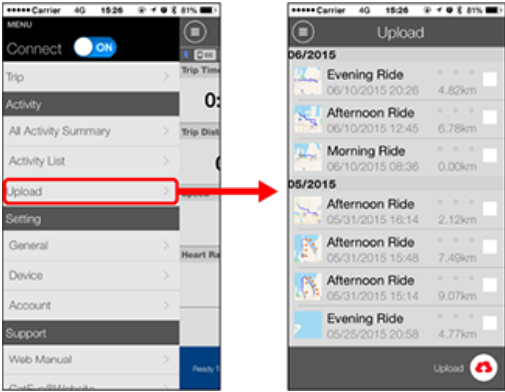


Multiple activities can be uploaded to service sites in one action.

Smartphone


1. Tap  (MENU) and then [Upload].

* Activities already uploaded to service sites are not displayed.



2. Select the activities you want to upload and tap  (Upload) to upload them to the specified sites.

* You must have an account with the relevant site to upload data.

* The upload destinations for Upload All are those sites turned on under  (MENU) > [Account].

 [Account](#)

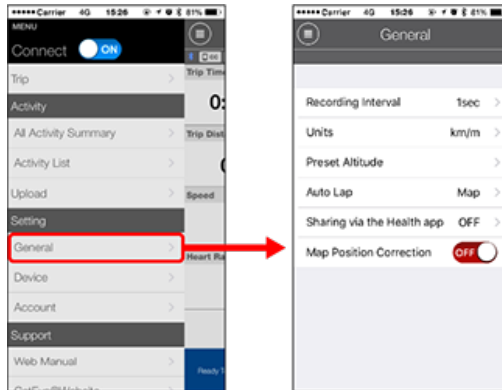
Usage Instructions

General

This section explains how to configure various measurement settings.

Smartphone

1. Tap (MENU) and then [General].



- **Recording Interval** **Mirror Mode measurement only**

Selects the interval at which the log is recorded.

- **Units**

Selects the measurement unit.

Important

If the unit is changed with the smart computer unconnected, the settings will be applied the next time the smart computer is connected.

- **Preset Altitude** **Mirror Mode measurement only**

Applies a preset to the altitude of a specified position such as your home.

Turning Preset Altitude ON will correct the altitude at the start point of the measurement, improving the reliability of the altitude measurement.

* The iPhone 6 and other smartphones with high-accuracy altitude measurement capabilities do not require an altitude preset.

- **Auto Lap** **Mirror Mode measurement only**

Selects which method—distance, time, or map—to use for automatic lap input.

* Designating a point on the map:

To Designate a point, press and hold on the desired location on the map.

- **Sharing via the Health app (iPhone Only)**

Sends measurement data to the iPhone's healthcare app.

- **Map Position Correction (iPhone Only)** **Mirror Mode measurement only**

[Map Position Correction] is a function for correcting map position offsets in China.

In countries other than China, turning [Map Position Correction] ON results in offset route positions being displayed in the activity list. Turning this function OFF corrects the offset positions.

Device

Account

Usage Instructions

General


Device

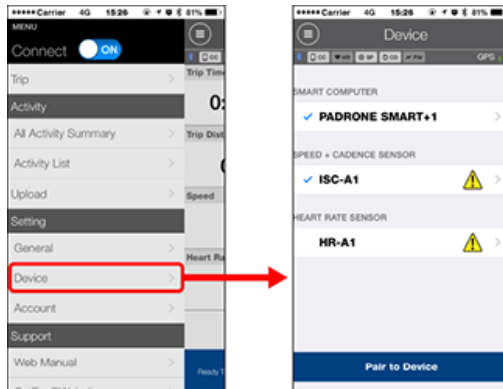
The following section explains how to pair a smart computer with a sensor and how to configure various settings.

Important

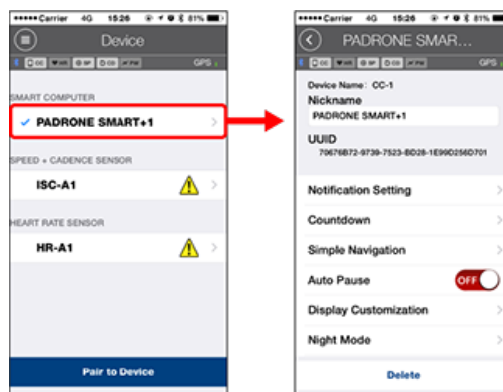
- Device settings are shared when smart computer is connected to your smartphone.
 - When using an iPhone, you cannot sync settings of commercial sensors. When measuring in Sensor Direct Mode, it is necessary to configure sensor settings separately via smart computer.
- ➔ 1. Switching to Sensor Direct Mode
 2. Pairing a smart computer with a sensor
 3. Tire circumference setting

Smartphone

1. Tap  (MENU) and then [Device].



Changing smart computer settings



- **Nickname**
Changes the name of the smart computer.
- **Notification Setting** (Mirror Mode measurement only)

Configures settings for incoming call, email, and SMS app notifications and smartphone remaining battery notification.

Important

! iPhone

Only incoming notifications for e-mail addresses registered through [Phone] and [Add Account] will be displayed.

When an incoming notification is received, the display will not show the app name or the name of the sender.

➔ [Configuring Incoming Notifications](#)

- **Countdown** Mirror Mode measurement only

Sets a distance or a time as a goal.

- **Simple Navigation** Mirror Mode measurement only

Designates a goal in simple navigation.

➔ [Designating a goal](#)

- **Auto Pause** Mirror Mode measurement only

This function automatically pauses measurement when the connection between smart computer and your smartphone is interrupted if you move away from the bicycle with your smartphone during measurement.

- **Display Customization**

Lets you select the measurement screens to add or delete in addition to the screen segments and functions (measurement data) to be displayed on each screen.

➔ [Changing the measurement screen](#)

- **Night Mode**

Configures when to start and end backlight illumination.

When Night Mode is ON, pressing any button on the smart computer during the specified time will turn the backlight on.

- **Sounds**

Lets you turn the operation sounds, alert sounds, and notification sounds on or off.

- **Compass** Mirror Mode measurement only

Lets you select whether to show or hide the compass on the measurement screen.

- **Odometer**

Lets you manually set total distance traveled.

* Use this function when you want to continue from the same distance after purchasing a new smart computer or when resetting smart computer.

- **Function Names**

Lets you select between [Abbreviated] or [Full] for displaying measurement data names on the measurement screen.

(Ex.) Abbreviated display for trip distance: DST

Full display for trip distance: Distance

- **Custom Average Power**

Sets the number of seconds for calculating average power to your preferences.

* Custom average power measurements require pairing with a power sensor.

- **Firmware Update**

Updates the smart computer firmware to the most recent version.

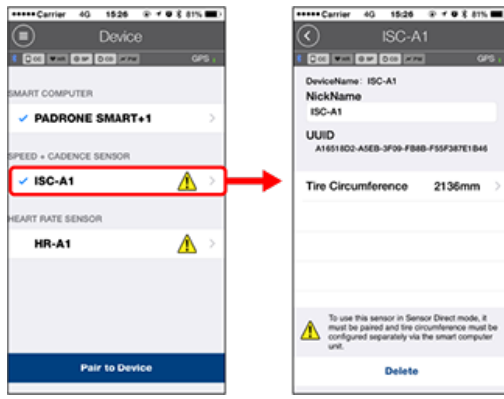
Changing sensor settings

Important

These settings can be configured even when your smartphone is not connected to smart computer.

If settings differ between devices, they will be overwritten with data from Cateye Cycling™ the next time the devices are connected.

* Information on commercial sensors paired with the smart computer remains as it is.



- **Nickname**

Changes the name of the sensor.

* Paired sensors are displayed with "A" or "C" after the sensor name.

A : Sensor paired with Cateye Cycling™

C: Sensor paired with a smart computer

- **Tire Circumference (only with a sensor capable of speed measurement)**

Set the tire circumference for a sensor capable of speed measurement.

Select the tire circumference according to the tire size written on the side of the tire.

[➔ Determining tire circumference](#)

* Default value: 2096 mm (700x23C)

* Requires to set tire circumference for each sensor.

* See the following for pairing with a smart computer or a sensor.

[➔ Pairing with smart computer](#)

[➔ Pairing with a sensor](#)

Account

Device

Configuring Incoming Notifications

Notifications from smartphone applications and the smartphone's remaining battery can be displayed on the smart computer.

Important

- Cateye Cycling notification settings are applied to applications enabled in the smartphone's notification settings.
- Email notifications are shown for e-mail accounts registered in the smartphone settings.


! iPhone

Only incoming notifications for e-mail addresses registered through [Phone] and [Add Account] will be displayed.

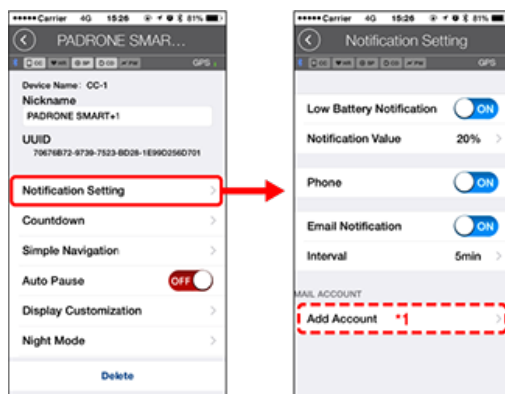
When an incoming notification is received, the display will not show the app name or the name of the sender.

Changing settings on an iPhone


Smartphone

Tap  (MENU) > [Device] > [Smart computer name], and then follow the procedure below.



1. Tap [Notification Setting].



• Low Battery Notification


When the smartphone battery reaches a specified amount,  100% (remaining smartphone battery) flashes on the smart computer.

• Phone / Email :

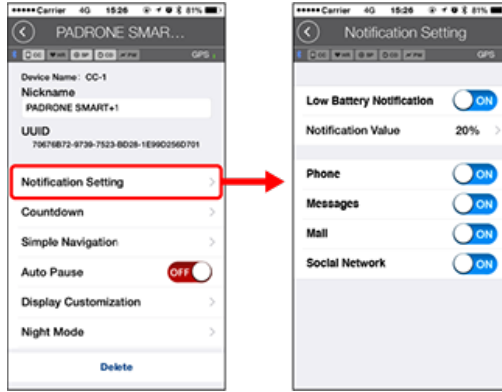
When a notification arrives, [Phone] or [Mail] flashes on the smart computer's screen, with an audible alarm. After the notification closes,  /  (incoming call/email notification icon) will flash.

*1: It is necessary to configure email account settings to receive incoming notification.


Smartphone

Tap  (MENU) > [Device] > [Smart computer name], and then follow the procedure below.

1. Tap [Notification Setting].



• Low Battery Notification

When the smartphone battery reaches a specified amount,  100% (remaining smartphone battery) flashes on the smart computer.

• Phone / Messages / Email / Social Network

When a notification arrives, [Application name] and [Contact name] (alphabetical), or [Phone number] or [Email address] flashes on the smart computer's screen, with an audible alarm.

BEEP! BEEP! BEEP!



* Contact name registered with non-alphabet characters will be displayed as "Other".

After the notification closes,  /  /  (incoming notification icon) and the notification count will flash.



* The incoming notification icons and count cannot be displayed when screen customization is set to display 8 screen segments.


* The incoming notification icons and count are reset when measurement is paused, reset, or finished.

Device

Designating a goal

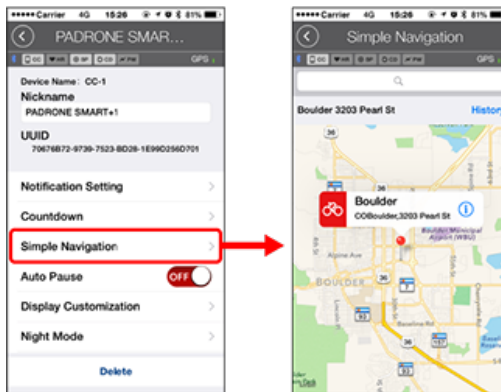
The following explains how to designate a goal in simple navigation.

Smartphone

Tap  (MENU) > [Device] > [Smart computer name], and then follow the procedure below.

1. Tap [Simple Navigation].

Under [Simple Navigation], there are four methods for designating a goal.



- **Enter the address:**
Enter an address in the search field.
- **Select from a map:**
Swipe the map to move the location, and long-press to confirm.
- **Select from an iPhone contact:**
Tap [History] > [Select from Contacts] to select a goal from the addresses of your registered contacts.
- **Select from history:**
Tap [History] to select a goal from the history list.

Device

Changing the measurement screen

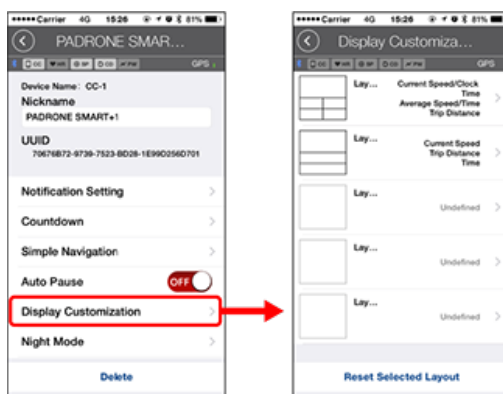
This section explains how to change the display of the measurement screen.

Smartphone

Tap  (MENU) > [Device] > [Smart computer name], and then follow the procedure below.

1. Tap [Display Customization].

Here, you can verify the current screen segments and functions (measurement data).

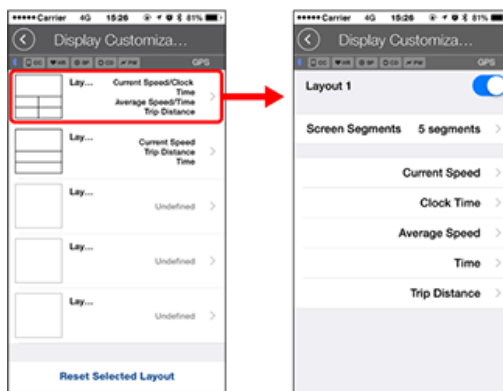


- **Changing the order of screens 1 through 5:**

Tap [Edit] and swipe the desired screen to change the order.

2. Tap a screen to change how it is displayed.

Select the measurement screens to show or hide and the screen segments and functions (measurement data) to be displayed.



- **Displaying/hiding the measurement screen**

If the screen display is set to ON, that measurement screen will be displayed.

If it's set to OFF, that screen will not be displayed.


- **Selecting screen segments:**

Tap [Screen Segments] to select between [None] and [8 segments].

* The simple navigation function cannot be displayed when [Screen Segments] is set to [7 segments] or [8 segments].

* The incoming notification icons and count cannot be displayed when [Screen Segments] is set to [8 segments].

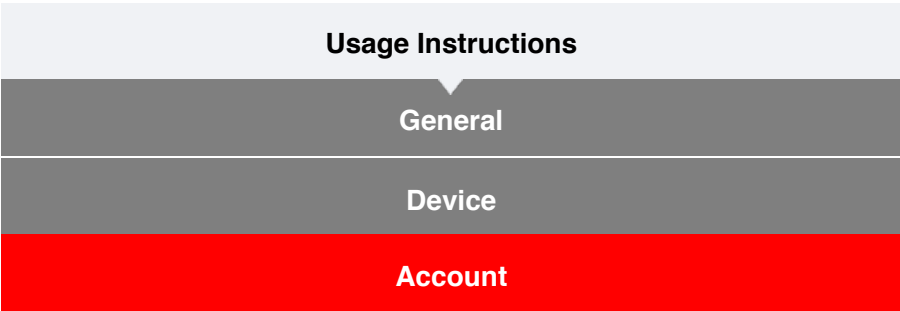
- **Selecting a function (measurement data):**

Tap [Function Names] or  to select a function.


- **Reordering functions:**

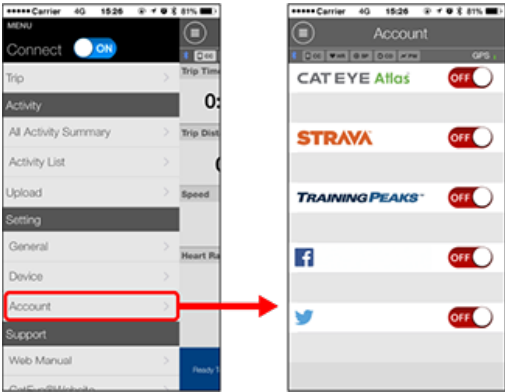
Tap [Edit] and swipe the desired function to another location to change the display position.

* Screen customization settings will be applied to both Mirror Mode and Sensor Direct Mode.



Set up the service sites and social networking services (SNSs) to upload your activities.

1. Tap  (MENU) and then [Account].



Adjust settings for the service sites below.

* You must have an account with the relevant site to upload data.

Service sites

- [CATEYE Atlas™](#)
- [STRAVA™](#)

* When entering an account, do not use [Log in using Google]. Instead, enter your email address to log in to STRAVA.

- [TRAINING PEAKS™](#)


SNS

- [Facebook™](#)
- [Twitter™](#)

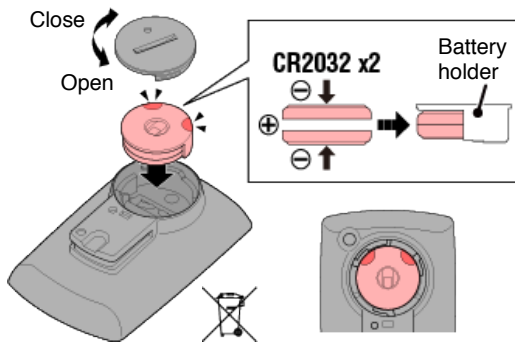
* When using an SNS, links to activities uploaded to Cateye Atlas™ are posted.

Battery replacement

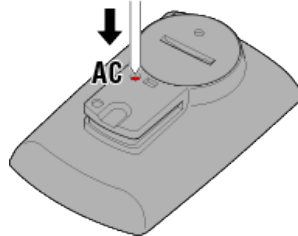
Smart computer

When  (battery icon) turns on, it is time to replace the battery.

1. Remove the battery cover and pull out the battery holder.
2. Insert two new lithium batteries (CR2032) into the battery holder, with the (+) sides facing each other.



3. After replacing the battery, press AC on the back of the computer.
(Restart operation)



• Optional sensors

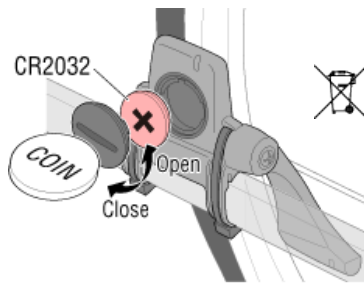
Speed (cadence) sensor (ISC-12)

Important

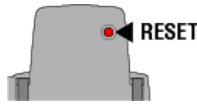
If using a CATEYE sensor, the values related to the sensor's battery replacement period start flashing to indicate that it is time to replace the battery.

If smart computer's current speed or cadence display starts flashing, it is time to replace the battery.

Install a new lithium battery (CR2032) so that the (+) side is visible and close the battery cover securely.



* After replacing the battery, always press **RESET** and check the position of the sensor relative to the magnet.

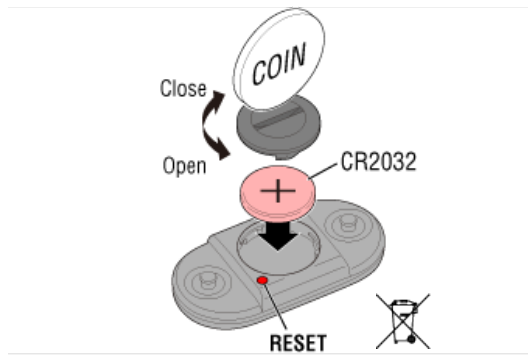


Heart rate sensor (HR-12)

Important

If using a CATEYE sensor, the values related to the sensor's battery replacement period start flashing to indicate that it is time to replace the battery.

If smart computer's heart rate display starts flashing, it is time to replace the battery. Install a new lithium battery (CR2032) so that the (+) side is visible and close the battery cover securely.



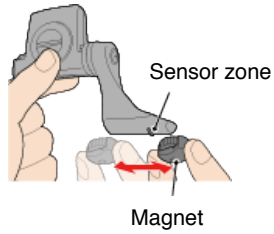
* After replacing the battery, always press **RESET**.

Activating the sensor

Activate the sensor via the following method:

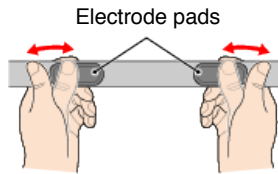
- **Speed sensor / Speed (cadence) sensor (ISC) / Cadence sensor**

Move the magnet through the sensor zone several times. (Within 3 mm)



- **Heart rate sensor**

Rub both electrode pads with thumbs to transmit heart rate signal.



- **Power sensor**

Refer to the power sensor instruction manual.

Determining tire circumference

Determine tire circumference (L) by referring to the tire size chart or by measuring the actual circumference of your bicycle tire.

Tire circumference reference table

* The tire size or ETRTO code is indicated on the side of the tire.

ETRTO	Tire size	L (mm)
47-203	12x1.75	935
54-203	12x1.95	940
40-254	14x1.50	1020
47-254	14x1.75	1055
40-305	16x1.50	1185
47-305	16x1.75	1195
54-305	16x2.00	1245
28-349	16x1-1/8	1290
37-349	16x1-3/8	1300
32-369	17x1-1/4 (369)	1340
40-355	18x1.50	1340
47-355	18x1.75	1350
32-406	20x1.25	1450
35-406	20x1.35	1460
40-406	20x1.50	1490
47-406	20x1.75	1515
50-406	20x1.95	1565
28-451	20x1-1/8	1545
37-451	20x1-3/8	1615
37-501	22x1-3/8	1770
40-501	22x1-1/2	1785
47-507	24x1.75	1890
50-507	24x2.00	1925
54-507	24x2.125	1965
25-520	24x1 (520)	1753
	24x3/4 Tubular	1785
28-540	24x1-1/8	1795
32-540	24x1-1/4	1905
25-559	26x1 (559)	1913
32-559	26x1.25	1950
37-559	26x1.40	2005
40-559	26x1.50	2010
47-559	26x1.75	2023
50-559	26x1.95	2050
54-559	26x2.10	2068
57-559	26x2.125	2070
58-559	26x2.35	2083

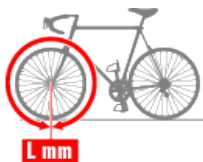
75-559	26x3.00	2170
28-590	26x1-1/8	1970
37-590	26x1-3/8	2068
37-584	26x1-1/2	2100
	650C Tubular 26x7/8	1920
20-571	650x20C	1938
23-571	650x23C	1944
25-571	650x25C 26x1 (571)	1952
40-590	650x38A	2125
40-584	650x38B	2105
25-630	27x1 (630)	2145
28-630	27x1-1/8	2155
32-630	27x1-1/4	2161
37-630	27x1-3/8	2169
40-584	27.5x1.50	2079
54-584	27.5x2.1	2148
57-584	27.5x2.25	2182
18-622	700x18C	2070
19-622	700x19C	2080
20-622	700x20C	2086
23-622	700x23C	2096
25-622	700x25C	2105
28-622	700x28C	2136
30-622	700x30C	2146
32-622	700x32C	2155
	700C Tubular	2130
35-622	700x35C	2168
38-622	700x38C	2180
40-622	700x40C	2200
42-622	700x42C	2224
44-622	700x44C	2235
45-622	700x45C	2242
47-622	700x47C	2268
54-622	29x2.1	2288
56-622	29x2.2	2298
60-622	29x2.3	2326

Measure actual tire circumference

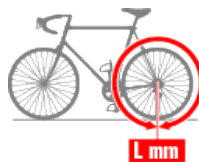
With tire air pressure adjusted appropriately, apply a load to the bicycle.

Using the valve, etc., as a marker, rotate the tire once and measure the distance traveled along the ground.

When using front
wheel for speed
measurement



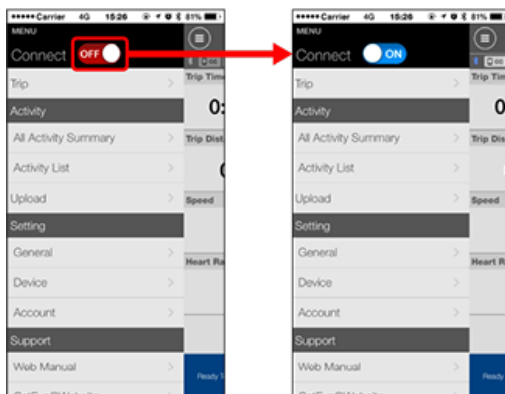
When using rear
wheel for speed
measurement



Connecting smart computer and smartphone

Smartphone

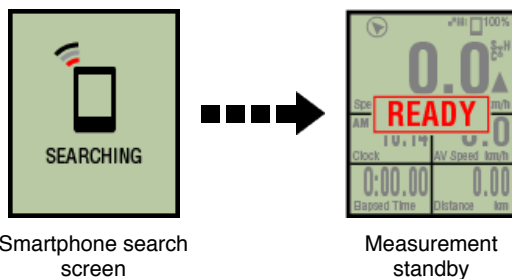
1. Launch Cateye Cycling™, and from  (MENU) turn on [Connect].



Smart computer

2. On the measurement screen, press **MODE** for 1 second to display the smartphone search screen and connect with your smartphone.

When smart computer connects to a smartphone, it switches to the measurement standby display.



Smartphone search screen

Measurement standby

* If the connection is made when Cateye Cycling™ is already measuring, [PAUSE] and measured values are displayed.

* The appearance of the smart computer screen depends on the state of Cateye Cycling™.

Smartphone connection is now complete.

Power sensor calibration

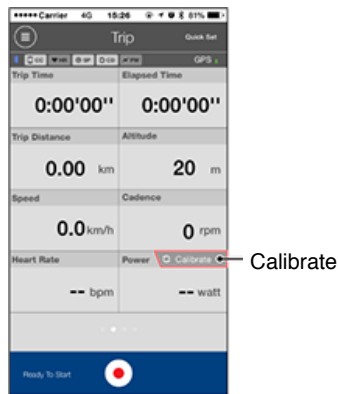
To display correct values, the power sensor needs to be calibrated appropriately. Calibrate the power sensor before using according to the power sensor instruction manual. If the smart computer displays any value other than 0 when the power sensor is in an unloaded state, follow the procedure below to return the smart computer power value to 0.

Caution

Always perform calibration without any power applied to parts to which the power sensor is attached (cranks, etc.)

Smartphone

While the smart computer is connected and measurement is stopped, tap [Calibrate] on the [Trip] screen.



The power value will return to 0 after 3 seconds.

Pairing with smart computer

Pair a smart computer.

Important


- Pairing is necessary to use a smart computer or a sensor.
- Do not pair sensors at a race venue or in similar locations where there are a lot of other users. Doing so may cause the smart computer to be paired with another device.

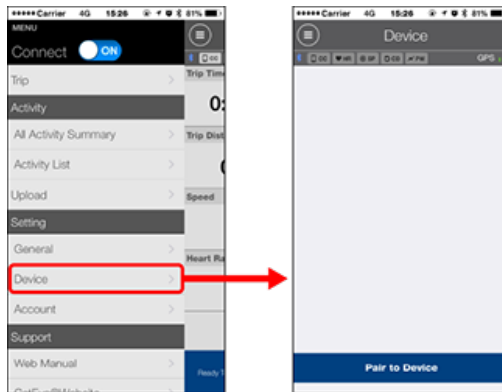
Smart computer

1. On the measurement screen, press **MODE** for 1 second to display the smartphone search screen.



Smartphone search screen

2. From  (MENU) at the top left of the screen, turn on [Connect] and tap [Device].



Tap [Pair to Device] to start pairing.

When Cateye Cycling™ detects a smart computer, the smart computer's name will be displayed on the screen, and pairing will be complete.

* To continue, tap [Smart computer name] to display the settings configuration screen for the various smart computer settings.

 [Device](#)

Smart computer pairing is now complete.

Pairing with a sensor

Smart computer can be used with sensors compatible with Bluetooth SMART. Pair it with optional accessories or commercial sensors as required.

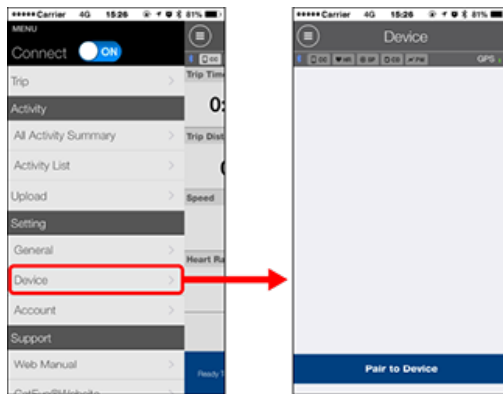
Important

- Pairing is necessary to use a smart computer or a sensor.
- When using an iPhone, you cannot sync settings of commercial sensors. When measuring in Sensor Direct Mode, it is necessary to configure sensor settings separately via smart computer.

- ➔ 1. Switching to Sensor Direct Mode
2. Pairing a smart computer with a sensor
3. Tire circumference setting

Smartphone

1. Verify that [Connect] is set to ON in the  (MENU), and then tap [Device].



Tap [Pair to Device] to start pairing.

2. Activate the sensor.

➔ Activating the sensor

When Cateye Cycling™ detects the sensor signal, a message is displayed on the smartphone.

Tap [Pair]. The synchronized sensor is displayed on the [Device] screen and pairing is completed.

* When pairing a sensor with Cateye Cycling™, an "A" is displayed after the sensor name.

* If you have paired a sensor capable of speed measurement, proceed to step 3.

3. Set the tire circumference for a sensor capable of speed measurement.

Tap [Device], and then tap [Sensor name] > [Tire Circumference] (the length of the outer circumference of the tire).

Select the tire circumference according to the tire size written on the side of the tire.

➔ Determining tire circumference

* Default value: 2096 mm (700x23c)

* Requires to set tire circumference for each sensor.

* You can also change sensor names and cancel pairing from this screen.

Sensor pairing is now complete.

* If you want to pair another sensor, repeat the same procedure again.

Important

Cadence, heart rate, and power data will not be displayed under the initial configuration. Change the measurement screen to be able to display measured values from paired sensors.

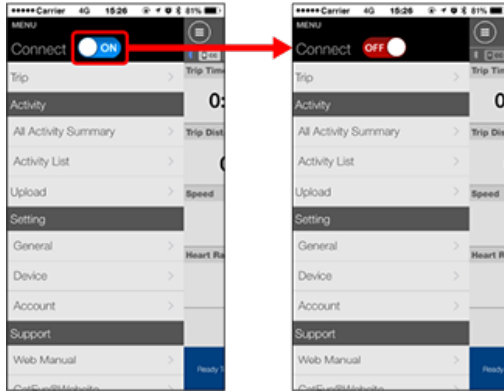
 [Changing the measurement screen](#)

Switching to Sensor Direct Mode

Switch from Mirror Mode to Sensor Direct Mode.

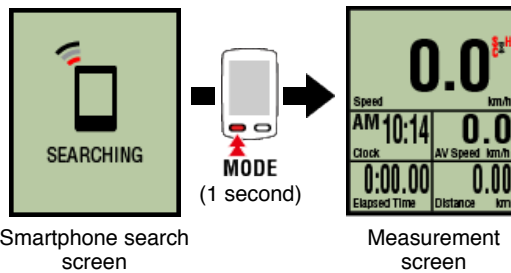
Smartphone

1. Close Cateye Cycling™ or from  (MENU), turn off [Connect].



Smart computer

2. From the smartphone search screen, press **MODE** for 1 second to switch to Sensor Direct Mode.



* Smart computer will search for a sensor instead of your smartphone. In this mode, the sensor icon flashes to indicate sensor reception status.

- **S** (Flash): When the speed signal is received
- **C** (Flash): When the cadence signal is received
- **S/C** (**S** and **C** flash simultaneously): When the speed/cadence (ISC) sensor signal is received
- **H** (Flash): When the heart rate signal is received
- **P** (Flash): When the power signal is received

Important

Sensor Direct Mode and Mirror Mode measure independently and data has no continuity.

Pairing a smart computer with a sensor

Tire circumference setting

Switching to Sensor Direct Mode

Pairing a smart computer with a sensor

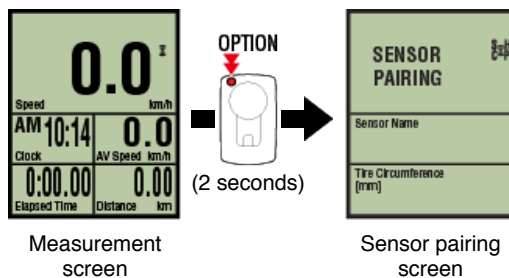
Pair a sensor that you want to use with smart computer.

Important

- Pairing (sensor ID synchronization) must be performed in order to use a sensor.
- Do not pair sensors at a race venue or in similar locations where there are a lot of other users. Doing so may cause the smart computer to be paired with another device.
- Pair all sensors that you intend to use.
- During pairing or when connected to a smartphone, if sensor information is stored in Cateye Cycling™, this information is written to the smart computer.

[➔ Pairing with a sensor](#)

1. From the measurement screen, press **OPTION** for 2 seconds to switch to the sensor pairing screen.

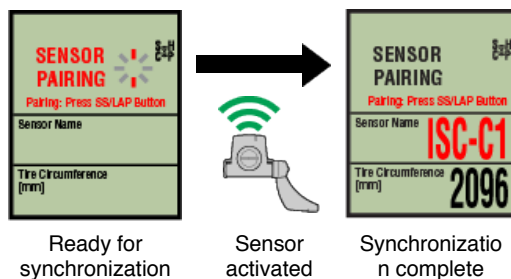


* When the sensor pairing screen is left on for 1 minute, the smart computer returns to the measurement screen.

2. Press **SS/LAP** to start pairing.



3. Activate the sensor that you want to pair.



[➔ Activating the sensor](#)

The name of the synchronized sensor is displayed and pairing is completed.

- **SP** : Speed sensor
- **ISC** : Speed/cadence sensor
- **CD** : Cadence sensor
- **HR** : Heart rate sensor

- **PW** : Power sensor

* When pairing a sensor with a smart computer, a "C" is displayed after the sensor name.

Important

When the smart computer displays [ID FULL] on the screen and returns to the sensor pairing screen, the maximum number of sensors have been paired.

Up to 9 separate sensor IDs can be paired with the smart computer.

If the maximum number of sensors have been paired, in the sensor pairing screen, press **OPTION** for 4 seconds to clear all pairings.

Then re-pair the required sensors.

* Pairing standby time is 5 minutes.

Activate the sensor within this time.

* If you want to pair another sensor, repeat steps 2 and 3.

4. Press **OPTION** to return to the measurement screen.



Pairing is now complete.

If you have paired a sensor capable of speed measurement, proceed with setting the tire circumference.

Tire circumference setting

Switching to Sensor Direct Mode

Pairing a smart computer with a sensor

Tire circumference setting

Set the tire circumference for a sensor capable of speed measurement.

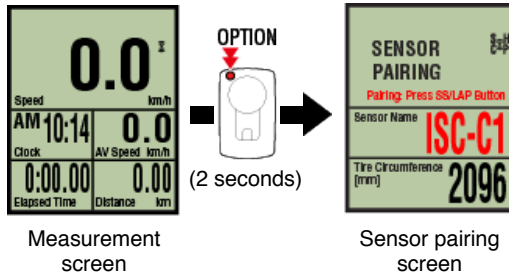
Important

- Pairing (sensor ID synchronization) must be performed first.

➔ [Pairing a smart computer with a sensor](#)

- Set tire circumference for each sensor.
The default value is 2096 mm (700x23c).

1. From the measurement screen, press **OPTION** for 2 seconds to switch to the sensor pairing screen.



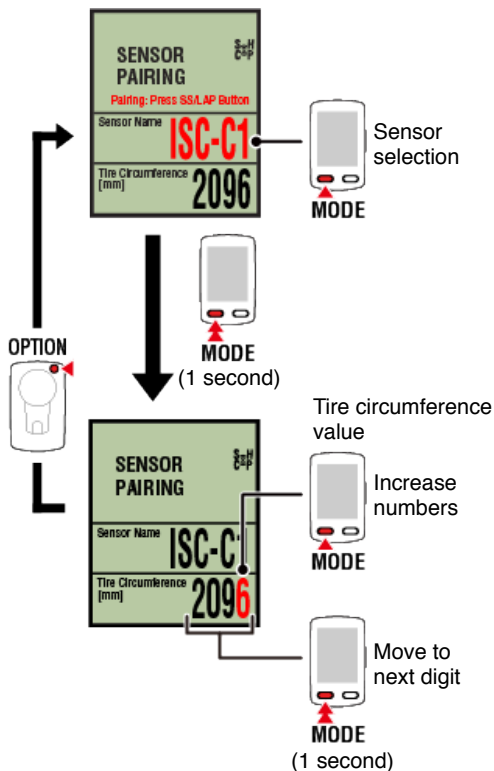
* When the sensor pairing screen is left on for 1 minute, the smart computer returns to the measurement screen.

2. Select the sensor you want to set, and enter the tire circumference.

Enter the circumference in mm of the tire (the length of the outer circumference of the tire) on which the sensor is installed.

(Setting range: 0100 – 3999 mm)

➔ [Determining tire circumference](#)



* Sensors that can be selected are those that have been paired with Cateye Cycling™ or a smart computer. The letter that appears after the sensor name indicates how the sensor was paired.

- **A** : Sensor paired with Cateye Cycling™
- **C** : Sensor paired with a smart computer

* Error is displayed if values outside the setting range are entered.

3. Press **OPTION** to confirm settings.



Pressing **OPTION** again returns to the measurement screen.

* If you have changed settings, always press **OPTION** to confirm changes.

This completes the tire circumference setting procedure.

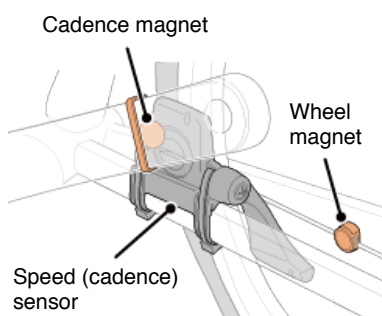
Mounting the speed (cadence) sensor (ISC-12)

The speed (cadence) sensor can be mounted either on the top or bottom of the chain stay.

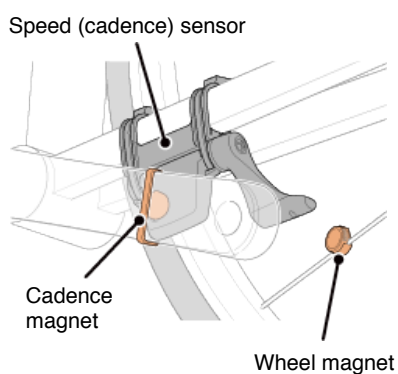
Caution

If the speed (cadence) sensor is mounted on the bottom of the chain stay rather than on the top, the adjustment range between the sensor and the magnet will be narrower.

• Mounting on top of chain stay



• Mounting on bottom of chain stay



* Mounting procedures give instructions for mounting on the top of the chain stay.

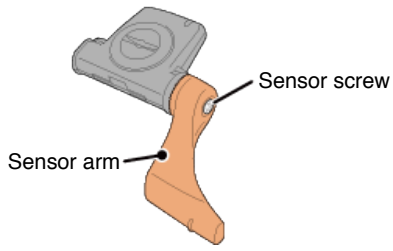
Watch video



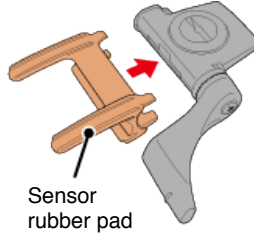
See illustrations

1. Temporarily attach the sensor to the left chain stay.

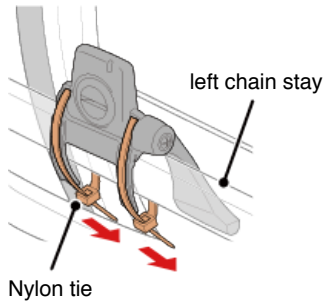
(1) Loosen the sensor screw using a Phillips screwdriver and check that the sensor arm moves.



(2) Attach the sensor rubber pad to the sensor.



(3) Refer to the illustration and temporarily attach the sensor to the left chain stay with nylon ties.

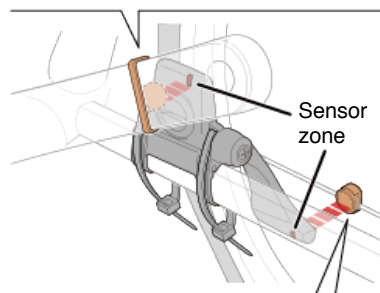
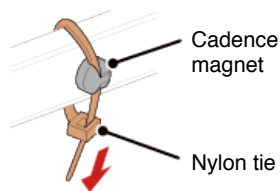


Caution

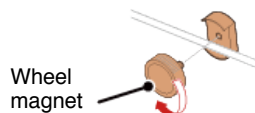
Do not fully tighten the nylon ties. Once the nylon ties are fully tightened they cannot be removed.

2. Temporarily attach the magnet.

Inside of the crank



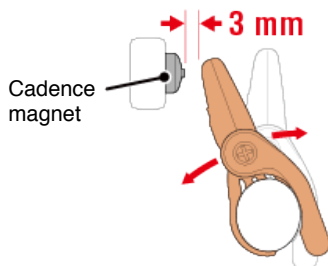
Spoke



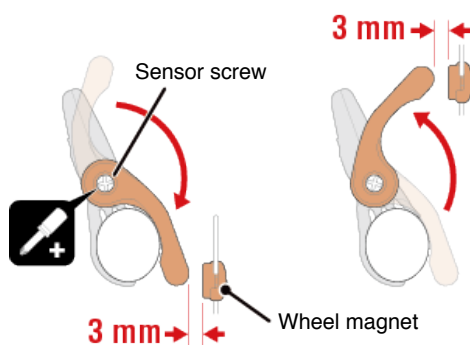
- (1) Using a nylon tie, temporarily attach the cadence magnet to the inside of the left crank arm so that it faces the cadence sensor zone.
 - (2) Rotate the sensor arm and temporarily attach the wheel magnet to a spoke facing the speed sensor zone.
- * If the sensor cannot be positioned so that both magnets (speed and cadence) pass through their respective sensor zones, reposition the sensor and the magnets so that each magnet passes through its sensor zone.

3. Adjust the gap between the sensor zone and the magnet.

- (1) Tilt the sensor so that the gap between the cadence magnet and the cadence sensor zone is approximately 3 mm, then fasten the sensor securely with nylon ties.



- (2) Rotate the sensor arm so that the gap between the wheel magnet and the speed sensor zone is approximately 3 mm, then tighten the sensor screw securely.



4. Secure all parts.

Tighten the sensor's nylon ties, the sensor screw, and the magnets, and check that they are not loose.

Trim off the excess nylon tie.

- * If using pedals with steel axles, the cadence magnet can be attached magnetically to the pedal axle. In this case, remove the adhesive tape from the magnet and do not use the nylon tie.

Wearing the heart rate sensor (HR-12)

Heart rate measurement is performed by wearing a heart rate sensor around the chest.

Before wearing the heart rate sensor

Warning

Never use this device if you use a pacemaker.

- To eliminate measurement errors, it is recommended to moisten the electrode pads with water or apply electrolyte cream to the pads.
- If you have sensitive skin, moisten the electrode pads with water and wear it over a thin shirt.
- Chest hair may interfere with measurement in some cases.

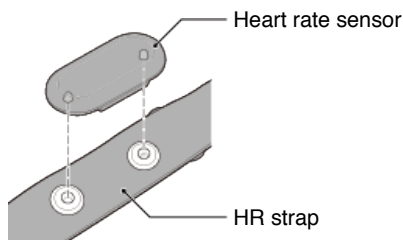
Watch video



See illustrations

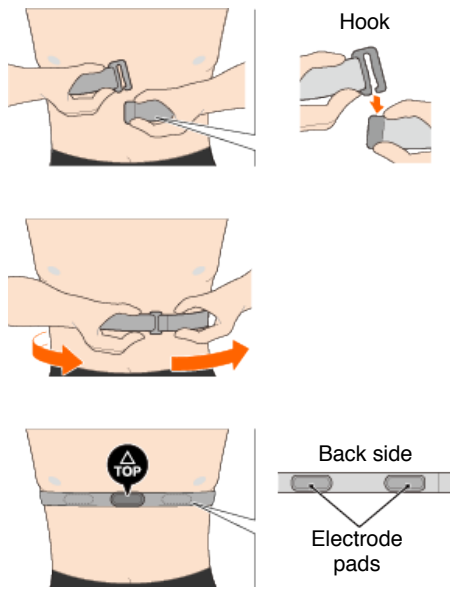
1. Attach the sensor to the HR strap.

Press until you hear a clicking sound.



2. Wear the HR strap by sliding the hook over the other end of the strap.

Wind the HR strap around your body and adjust the length to suit your chest (underbust). Overtightening the strap may cause discomfort during measurement.



- * Wear the heart rate sensor so that **TOP** faces up.
- * Ensure that the electrode pads are in close contact with your body.
- * If you have dry skin or are wearing the sensor over a shirt, measurement errors may result. In such cases, moisten the electrode pads with water.

Frequently Asked Questions

Cannot pair with an Android smartphone

Try the following methods if pairing cannot be performed using the procedure in “[Pairing with smart computer](#)”.

Smart computer

1. On the measurement screen, press **MODE** for 1 second to display the smartphone search screen.



Smartphone search screen

Smartphone


2. On the smartphone, tap **[Bluetooth]** under **[Settings]**.

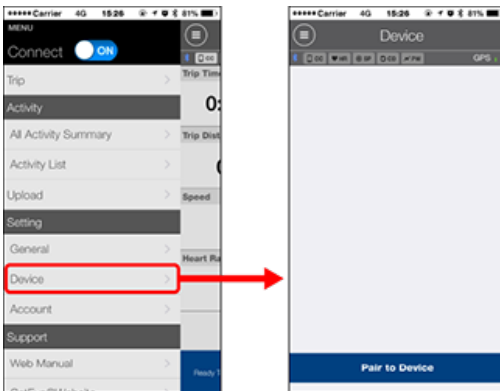
If [Bluetooth] is turned OFF, turn it ON.

[CA:##:##:##:##:##] will be displayed if the smart computer is detected.

Tapping will cause [CC-SC100B] to be displayed as the device name.

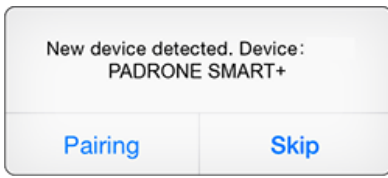
3. Launch **Cateye Cycling™**.

4. From  (MENU) at the top left of the screen, turn on **[Connect]** and tap **[Device]**.



Tap **[Pair to Device]** to start pairing.

When Cateye Cycling™ detects smart computer, a message is displayed on the smartphone.



Tap [Pairing] to complete pairing.

Abnormal display

General

Altitude

Simple navigation and compass

Heart rate

Power

Measurement does not work

In Mirror Mode

In Sensor Direct Mode

Cannot measure heart rate

Cannot measure power

Data cannot be reset


On the measurement screen, press **MODE** for 3 seconds.

Difference between "finishing a trip" and "completing measurement"

What does "finishing a trip" mean?

- "Finishing a trip" refers to resetting smart computer (by pressing **MODE** for 3 seconds). This action resets measurement values to 0 and changes the screen to the "ready" display. You can then start measuring your next trip.

What does "completing measurement" mean?

- "Completing measurement" refers to saving and uploading a trip or a series of trips from the save & upload screen in Cateye Cycling™. You can do this by tapping  (Flag) on the trips screen in Cateye Cycling™.


Data is not saved

Why is data sometimes not saved as summary data even after a reset operation?

- Measurements for trips of 0.1 km or shorter are not saved as summary data.

Data cannot be uploaded

Why can't I upload activities to a service site?


- Have you completed login settings for each service site? From Cateye Cycling™, tap  (MENU) > [Account], and then complete login settings by entering account information for each site.

Posting to Facebook from an iPhone is not possible

- Follow the procedure below to resolve the issue.
 1. On the iPhone, tap [Settings] > [Facebook].
 2. Under “Allow These Apps to Use Your Account”, switch “Cycling” off and then back on.

Why does my smartphone battery drain so quickly?

Have you been leaving [Connect] turned on in Cateye Cycling™ even when you are not performing measurement?

- It is recommended that you turn off [Connect] from  (MENU) to minimize smartphone battery drain.


Smart computer firmware cannot be updated

The firmware cannot be updated after "The update failed" is displayed while updating the smart computer's firmware.

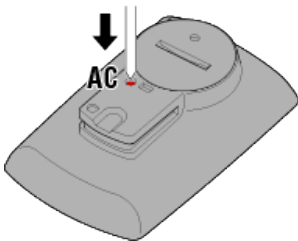
- The following procedure explains how to format the smart computer.

Caution

Formatting will delete all data and reset the smart computer to factory default settings. If the smart computer contains summary data measured in Sensor Direct Mode, import the data to the smartphone before doing format operation.

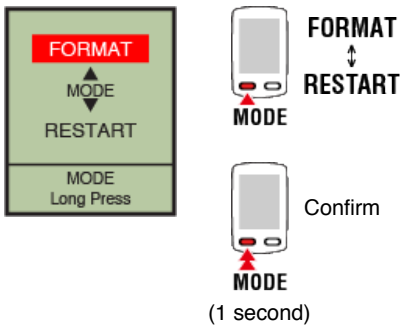
 [Importing summary data](#)

1. Press the AC button on the smart computer.



The initialization screen is displayed.

2. Press MODE once to cause [FORMAT] to blink, and then press MODE for 1 second.



Smart computer will be formatted and the display switches to the smartphone search screen.

Connect to the smartphone, and then try updating the firmware again.

! iPhone Why can't I add a mail account in Notification Setting?

For iCloud mail

Did you sign up for an iCloud mail account (@icloud.com)?

1. On the iPhone, tap [Settings] > [iCloud], and turn [Mail] ON.
Follow the on-screen directions to obtain a mail account.
2. In Cateye Cycling™, tap [Device] > [Smart computer name] > [Notification Setting] > [Add Account].
Enter your mail address and password.

Is two-step verification enabled for your Apple ID?

If two-step verification is enabled for your Apple ID, mail accounts cannot be added to Cateye Cycling™.

In a web browser, log in to My Apple ID and turn off two-step verification.

For Gmail

Authentication security for Gmail has been strengthened.

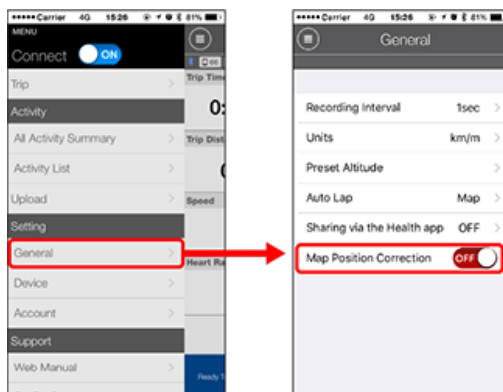
In a web browser, log in to Google, and go to [My Account] > [Sign-in & security].

Click [Connected apps & sites], and set [Allow less secure apps] to ON.

! iPhone An offset route is displayed in the Cateye Cycling activity list.

Is [Map Position Correction] turned ON?

- In Cateye Cycling, tap  (MENU) > [General].



If [Map Position Correction] is turned ON, turn it OFF.

Important

[Map Position Correction] is a function for correcting map position offsets in China. In countries other than China, turning [Map Position Correction] ON results in offset route positions being displayed in the activity list. Turning this function OFF corrects the offset positions.

! iPhone

After updating Cateye Cycling™ app, smart computer fails to reconnect to the app during the measurement.

Smart computer reconnects to my smartphone only when Cateye Cycling™ app is active (running in the foreground).

- Third-party sensors inhibit the connection. Delete the sensors with (⚠) from Cateye Cycling™ (☰) (MENU) > [Device], and then pair them again.

Smart computer turns off after displaying smartphone search screen.


- Press **MODE** button for 1 second to search the device and reconnect.
 - * Smart computer keeps measuring during this operation.

Frequently Asked Questions

Abnormal display : General

Measurements from a paired sensor are not displayed on the smart computer screen

Heart rate, cadence, and power data will not be displayed under the initial configuration of the measurement screen.

On Cateye Cycling™, tap  (MENU) > [Device] > [PADRONE SMART+] > [Display Customization] to change the measurement screen so that measured values from paired sensors can be displayed.

[➔ Changing the measurement screen](#)

Why is the display blank?

The battery is flat. Replace the battery with a new one.

[➔ Battery Replacement : Smart computer](#)

The screen is not displayed when the backlight is lit

The battery capacity has dropped due to low temperatures or some other reason. Replace the battery with a new one.

[➔ Battery Replacement : Smart computer](#)

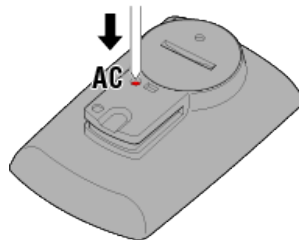
The display is behaving abnormally. How do I fix it?

The display may be abnormal if there is something that emits radio waves (such as railway tracks or a TV transmitter station) in the vicinity. Move away from the possible cause, reset smart computer (press **MODE** for 3 seconds), and start measurement again.

The screen is frozen. What should I do?

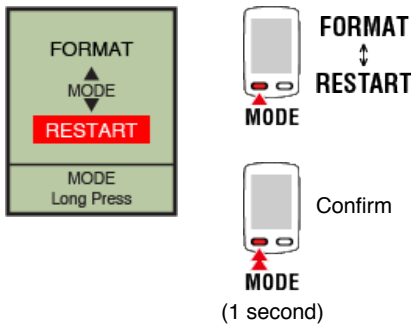
The following procedure explains how to restart the smart computer.

1. Press the AC button on the smart computer.



The initialization screen is displayed.

2. Press MODE once to cause [RESTART] to blink, and then press MODE for 1 second.



The smart computer will restart and switch to the smartphone search screen.

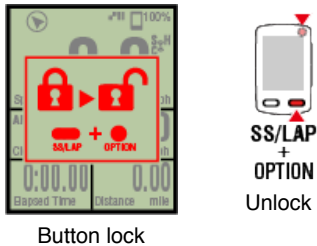
M MEMORY FULL is displayed on the screen

The smart computer's memory is full.

If you are using the smart computer linked to a smartphone, connect to Cateye Cycling™ and import summary data. This will clear the memory and the message will disappear.

Screen is locked

Press **SS/LAP** and **OPTION** at the same time to unlock.



Button lock

Current speed, cadence, and heart rate values are flashing

If using a CATEYE sensor, measurement values start flashing to indicate that there is little remaining battery power in the relevant sensor.

Replace the battery for the relevant sensor.

[➔ Battery replacement : Optional sensors](#)

Why are power values flashing on and off?

When using separate left and right power sensors, power values flash on and off to indicate that only signals from one sensor are being received.

Check the power sensor.

Why are speed values strange?

If you are not using a sensor that is capable of measuring speed, smart computer uses your smartphone's GPS for measurement, so depending on reception conditions (for example, if you are in a tunnel), measurement may be interrupted or smart computer may indicate values other than actual values.

Frequently Asked Questions

Abnormal display : Altitude

Why is there variation in measurement values for ascending altitude?

As altitude measurement relies on the smartphone's GPS function, it may be different from the actual altitude.

Frequently Asked Questions

Abnormal display: Simple navigation and compass

The compass or the direction to the goal is wrong

Because the compass and the direction to the goal rely on the smartphone's GPS function, the direction may be different from the actual direction.

Moreover, the direction is determined by the movement of a bike, so the actual direction may not be displayed when stopped.

Simple navigation cannot be displayed

Did you press and hold the **OPTION** on the back of the smart computer?

- After specifying the destination using Cateye Cycling™, press and hold the **OPTION** on the smart computer to display the simple navigation function.

 [Simple navigation function](#)


Is smart computer in **Sensor Direct Mode**?

- Simple navigation cannot be displayed in Sensor Direct Mode.
Switch to Mirror Mode to use simple navigation.

 [Connecting smart computer and smartphone](#)

Does the measurement screen show **7 or 8 screen segments**?

- Simple navigation is shown when the measurement screen has between 1 and 6 segments. Press **MODE** to change the screen or change the number of screen segments in screen customization.

* To configure the screen segment settings for the measurement screen, tap  (MENU) > [Device] > [Smart computer name] > [Display Customization].

 [Changing the measurement screen](#)

Frequently Asked Questions

Abnormal display : Heart rate

Why are heart rate readings still displayed even after I take off the sensor?

When using a sensor made by another company, heart rate may continue to be displayed for a long time after the sensor has been removed.

Heart rate display is unstable. What should I do?

The heart rate sensor may not be attached correctly.

- Refer to the heart rate sensor instruction manual and attach the heart rate sensor in the correct position.

 [Wearing the heart rate sensor](#)

- Ensure that the heart rate sensor is attached so that **TOP** is facing up.
- Try moving the electrode from the left to the right so that it sits over your heart. This may improve heart rate display in some cases.

Frequently Asked Questions

Abnormal display : Power

Power display is not accurate. How can I fix it?

Refer to the power sensor instruction manual to perform calibration.

- If the smart computer displays any value other than 0 when the power sensor is in an unloaded state, follow the procedure below to return the smart computer power value to 0.

* Use Cateye Cycling™ to reset the power value. When using the sensor in Sensor Direct mode, connect to the smartphone before performing the reset.

- ➔ 1. [Connecting smart computer and smartphone](#)
- ➔ 2. [Power sensor calibration](#)

Frequently Asked Questions

Measurement does not work : In Mirror Mode

Smart computer does not switch to Mirror Mode measurement screen. What should I do?

Have you installed Cateye Cycling™ in your smartphone?

- Install Cateye Cycling™.



If using an iPhone



If using an Android smartphone



* See [Cateye Cycling Recommended Devices](#) for the latest information about smartphones recommended for use with Cateye Cycling™.

Have you paired your smartphone with smart computer?

- If you do not pair smart computer via Cateye Cycling™, smart computer cannot perform Mirror Mode measurement.

[➔ Pairing with smart computer](#)

Is [Connect] set to [ON] in the Cateye Cycling™ menu on your smartphone?

- Set [Connect] to [ON] or close Cateye Cycling™.

Is smart computer in Sensor Direct Mode?

- Press **MODE** for 1 second.
Smart computer switches to the smartphone search screen and connects with your smartphone.

[➔ Connecting smart computer and smartphone](#)

Smart computer during measurement stays on smartphone search screen and does not reconnect to the app.



Smartphone search screen

Smart computer turns off after displaying smartphone search screen.

- Press **MODE** button for 1 second to search the device and reconnect.
 - * Smart computer keeps measuring during this operation.

Switch the smart computer to Sensor Direct Mode temporarily and then switch back to Mirror Mode.

- This may connect the smart computer with the smartphone again.
 - * Press **MODE** for 1 second to switch between Sensor Direct Mode and Mirror Mode.

< iPhone Only >

Smart computer reconnects to my smartphone only when Cateye Cycling™ app is active (running in the foreground).

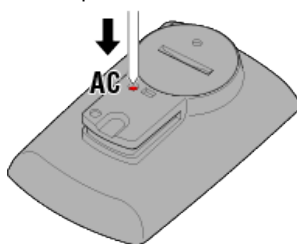
- Third-party sensors inhibit the connection. Delete the sensors with (⏏) from Cateye Cycling™ (MENU) > [Device], and then pair them again.

Cateye Cycling™ may have terminated abnormally.

- Start Cateye Cycling™.

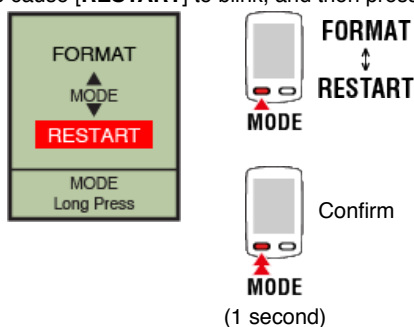
Restart the smart computer.

1. Press the **AC** button on the smart computer.



The initialization screen is displayed.

2. Press **MODE** once to cause [RESTART] to blink, and then press **MODE** for 1 second.



The smart computer will restart and switch to the smartphone s


If this does not resolve the issue, restart your smartphone.

Cannot connect to smartphone via the smart computer's smartphone search screen

Is [Connect] under (MENU) set to [ON] in Cateye Cycling™?


- Ensure that [Connect] is set to [ON].
 - If a connection cannot be established even when set to [ON], perform pairing with the smart computer again. Solutions will vary depending on the smartphone and model.

- **Padrone Smart users with iPhones**

Remove the smart computer registered under [Settings] > [Bluetooth] on the iPhone. Then remove the smart computer once under  (MENU) > [Device] in Cateye Cycling™, and perform pairing again.

[➔ Pairing with smart computer](#)


• **For Strada Smart users and Android smartphone users:**

Under  (MENU) > [Device] in Cateye Cycling™, remove the smart computer once and perform pairing again.

[➔ Pairing with smart computer](#)

The display says [READY], but measurement will not start. What should I do?

Press **SS/LAP** for 1 second to start measurement.

Tapping the  (Start Measurement) in Cateye Cycling™ has the same effect.



Measurement standby

[PAUSE] and measurement

Measurement is paused.

Press **SS/LAP** for 1 second to resume measurement.



Paused

Why can't I measure speed?

When using a speed (cadence) sensor (ISC-12), if the wheel magnet moves so that it is not facing the sensor zone, the computer registers the speed signal as 0 and measurement is not possible. (This is because the speed signal from the sensor has priority over GPS when measuring speed.)

Why is the sensor signal not being received?

Try the following solutions.

- Press the **RESET** button on any sensors that cannot be connected.

Have you paired the sensor?

- You must pair smart computer with your smartphone via Cateye Cycling™.

[➔ Pairing with a sensor](#)

Was the sensor paired using the smart computer?

- During pairing or when connected to a smartphone, if sensor information is stored in Cateye Cycling™, this information is written to the smart computer.

[➔ Pairing with a sensor](#)

Did you install Cateye Cycling™ app for the first time?

- The sensor information may not have been sent to Cateye Cycling™ app properly from smart computer when the app was installed for the first time.
Pair the sensor to Cateye Cycling™ app again.

[➔ Pairing with a sensor](#)

Are you using a Bluetooth Smart sensor?

- Smart computer can only receive signals from Bluetooth Smart sensors.

The sensor battery may be flat.

- Replace the battery with a new one.

[➔ Battery replacement : Optional sensors](#)

The magnet may not be in the correct position relative to the speed sensor or speed (cadence) sensor (ISC).

Refer to the sensor instruction manual and attach the sensor correctly.

[➔ Mounting the speed \(cadence\) sensor \(ISC-12\)](#)

Why can't I measure without a speed sensor?

You may have to wait a little longer after starting measurement.

- Your smartphone may take a while to acquire GPS in some cases.

Wait somewhere outdoors for a while before starting.

* The time it takes to acquire GPS will depend on your smartphone.

The location or weather may not be appropriate for acquiring a GPS signal.

- If your smartphone's GPS connection is lost, smart computer can no longer perform measurement.

* For information on how to acquire a GPS signal, refer to your smartphone instruction manual.

The smart computer shows a blank screen after leaving the bike and then coming back to it

When the smartphone moves away from the bicycle even for a short time, the smart computer may automatically enter sleep mode and show a blank screen.

Clicking smart computer will make it enter smartphone search mode, allowing you to reconnect to your smartphone.

If connection cannot be established from the smartphone search screen

- Switch the smart computer to Sensor Direct Mode temporarily and then switch back to Mirror Mode.
This may connect the smart computer with the smartphone again.

* Press **MODE** for 1 second to switch between Sensor Direct Mode and Mirror Mode.



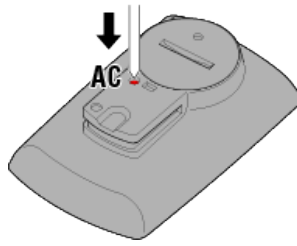
Smartphone search screen

Smart computer operation is abnormal.
What should I do?

Restart your smartphone.

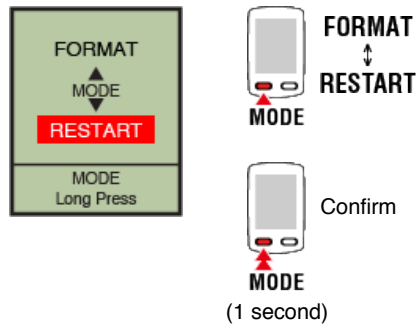
If the situation does not resolve the issue, restart the smart computer.

1. Press the AC button on the smart computer.



The initialization screen is displayed.

2. Press MODE once to cause [RESTART] to blink, and then press MODE for 1 second.



The smart computer will restart and switch to the smartphone search screen.

Connection to smartphone cannot be established after updating smart computer firmware

Unpair the smart computer from the [Device] screen in Cateye Cycling™, and then pair the smart computer again.

[➔ Pairing with smart computer](#)

If this does not resolve the issue, restart your smartphone.

Frequently Asked Questions

Measurement does not work : In Sensor Direct Mode

Why does smart computer not switch to the measurement screen?

Is the smartphone icon displayed on the entire screen?

- The smart computer is in Mirror Mode. Press **MODE** for 1 second to switch to Sensor Direct Mode.



Smartphone search screen

Sensor was disconnected during measurement. What should I do?

Try the following solutions.

- Switch the smart computer to Mirror Mode temporarily and then switch back to Sensor Direct Mode.
This may connect the sensor with the smart computer again.
 - * Press **MODE** for 1 second to switch between Sensor Direct Mode and Mirror Mode.
- Press the **RESET** button on any sensor that was disconnected.

Why is the sensor signal not being received?

Try the following solutions.

- Switch the smart computer to Mirror Mode temporarily and then switch back to Sensor Direct Mode.
This may connect the sensor with the smart computer again.
 - * Press **MODE** for 1 second to switch between Sensor Direct Mode and Mirror Mode.
- Press the **RESET** button on any sensors that cannot be connected.

Is [Connect] set to [ON] in the Cateye Cycling™ menu on your smartphone?

- Set [Connect] to [OFF] or close Cateye Cycling™.
-

Have you paired the sensor?

- You must pair smart computer with your smartphone via Cateye Cycling™.

[➔ Pairing with a sensor](#)

Was the sensor paired using the smart computer?

- During pairing or when connected to a smartphone, if sensor information is stored in Cateye Cycling™, this information is written to the smart computer.

[➔ Pairing with a sensor](#)

You may be using another smartphone app at the same time that can connect with Bluetooth sensors.

- Another Bluetooth device may be connected with your smartphone. Bluetooth sensors are only able to connect with a single device at a time. Stop using the other app or change its settings so that it does not connect to Bluetooth sensors.

You may be using an iPhone with a commercial sensor.

- Sensors made by another company must be paired separately with smart computer. The same applies to tire circumference for sensors capable of measuring speed.

➔ [Pairing with a sensor](#)

➔ [Tire circumference setting](#)

Are you using a Bluetooth Smart sensor?

- Smart computer can only receive signals from Bluetooth Smart sensors.

The sensor battery may be flat.

- Replace the battery with a new one.

➔ [Battery replacement : Optional sensors](#)

The magnet may not be in the correct position relative to the speed sensor or speed (cadence) sensor (ISC).

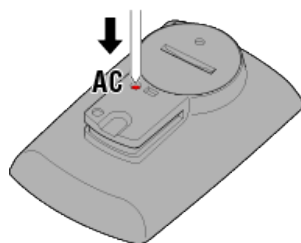
- Refer to the sensor instruction manual and attach the sensor correctly.

➔ [Mounting the speed \(cadence\) sensor \(ISC-12\)](#)

Smart computer operation is abnormal.
What should I do?

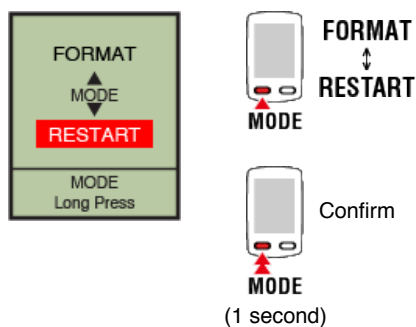
The following procedure explains how to restart the smart computer.

1. Press the AC button on the smart computer.



The initialization screen is displayed.

2. Press MODE once to cause [RESTART] to blink, and then press MODE for 1 second.



The smart computer will restart and switch to the smartphone search screen.

Frequently Asked Questions

Measurement does not work : Cannot measure heart rate

Why isn't the [H] icon flashing?

Have you paired the sensor?

- The sensor must be paired with Cateye Cycling™ or with smart computer.

[➔ Pairing with a sensor](#)

The electrode pad may have slipped out of position.

- Check that the electrode pad is still in close contact with your body.

Your skin may be dry.

- Wet the electrode pad a little.

The electrode pad may have deteriorated or become damaged due to prolonged usage.

- If this is the case, replace the attachment belt with a new one.

Frequently Asked Questions

Measurement does not work : Cannot measure power

Why isn't the [P] icon flashing?

Have you paired the sensor?

- The sensor must be paired with Cateye Cycling™ or with smart computer.

[➔ Pairing with a sensor](#)

The power sensor may not be attached correctly.

- Refer to the power sensor instruction manual and attach the power sensor correctly.

Handling and Support


Warning / Caution

Smart computer / Optional sensors

Warning!!!

- Do not concentrate on smart computer or your smartphone while riding. Always ride safely.
- Mount the bracket, sensor, and other components securely, and check them periodically to ensure that they are not loose.
- If a battery is swallowed accidentally, consult a doctor immediately.

Caution!

- Do not leave smart computer in direct sunlight for a long period of time.
 - Never disassemble smart computer.
 - Do not drop smart computer. Doing so may result in damage or personal injury.
 - Always install the bracket band dial by hand. Using a tool or other object to tighten the dial may crush the screw thread.
 - When cleaning the smart computer and accessories, do not use thinners, benzene, or alcohol.
 - Risk of explosion if battery is replaced by an incorrect type. Dispose of used batteries according to local regulations.
- 
- The LCD screen may be distorted when viewed through sunglasses with polarized lens.

Bluetooth Smart

Interference occurs in the following places and/or environments, which may result in an incorrect measurement.

- Near TVs, PCs, radios, or motors or in cars or trains.
- Near railroad crossings, along railway tracks, around television transmitting stations and radar bases, etc.
- When used together with other wireless devices (including other Bluetooth products) or some particular battery lights.

Cateye Cycling™

Smart computer can be used with the Cateye Cycling™ smartphone app for measurement and settings.

Downloading and using applications involves communication charges. It is therefore recommended to use Wi-Fi.

Maintenance

If smart computer unit or accessories become dirty, clean with a soft cloth moistened with mild detergent, and then wipe with a dry cloth.

Never apply paint thinner, benzene or alcohol; damage will result.

Standard accessories / Optional accessories

Standard accessories

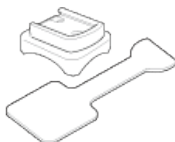
1602194
Bracket kit



1600280N
Bracket band



1602193
Bracket



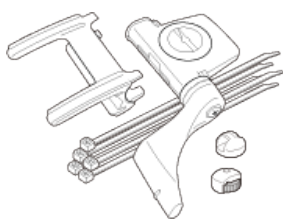
1665150
Lithium battery (CR2032)



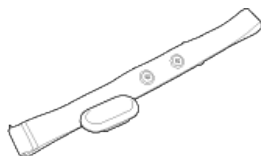
Optional accessories

The Bluetooth word mark and logos are owned by the Bluetooth SIG, Inc. and any use of such marks by CATEYE Co., Ltd. is under license. Other trademarks and trade names are those of their respective owners.

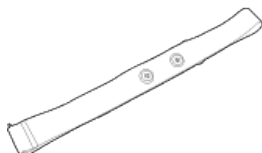
1603970
Speed sensor
(ISC-12)



1603980
Heart rate sensor (HR-12)



1603595
HR strap



1604100
Out-front bracket



1699691N
Wheel magnet



1699766
Cadence magnet



Specifications

Measurement functions

Measured data

Measuring range

Current speed	0.0(4.0)~105.9 km/h [0.0(3.0)~65.9 mph]
Maximum speed	0.0(4.0)~105.9 km/h [0.0(3.0)~65.9 mph]
Average speed	0.0~105.9 km/h [0.0~65.9 mph]
* The minimum speed measured via smartphone GPS is 0.0 (3.0) km/h [0.0 (2.0) mph].	
Trip distance	0.00~999999 km[mile]
Total distance	0.00~999999 km[mile]
Countdown distance	9999.99~0.00 km[mile]
Elapsed time	0:00.00~999:59
Trip time (total time including pause time)	0:00.00~999:59
Countdown time	999:59~0:00.00
Clock time	AM1:00.00~PM12.59.59 [0:00.00~23:59.59]
Date	2015.1.1~2099.12.31
Cadence (*1)	0(20)~299 rpm
Maximum cadence (*1)	0(20)~299 rpm
Average cadence (*1)	0~299 rpm
Heart rate (*1)	0(30)~299 bpm
Maximum heart rate (*1)	0(30)~299 bpm
Average heart rate (*1)	0~299 bpm
Power (*1)	0~1999 w
Maximum power (*1)	0~1999 w
Average power (*1)	0~1999 w
Custom average power (*1)	0~1999 w
Power balance (*2)	L=0~100% R=100~0% (R=100%-L)
Altitude	-500~99999 m[ft]
Ascending altitude	0~999999 m[ft]
Total altitude	0~99999 x1000m[ft]
Slope angle (*3)	-99 ~ +99 %
Maximum slope (*3)	-99 ~ +99 %
Average slope (*3)	-99 ~ +99 %
Calorie consumption	0~999999 kcal
Lap number	1 ~999
Split time	0:00.00~999:59
Lap timer (lap in real-time)	0:00.00~999:59
Lap trip distance in real-time	0.00~999999 km[mile]
Lap average speed in real-time	0.0~105.9 km/h [0.0~65.9 mph]

Lap average cadence in real-time (*1)	0~299 rpm
---------------------------------------	-----------

Lap average heart rate in real-time (*1)	0~299 bpm
--	-----------

Lap average power in real-time (*1)	0~1999 w
-------------------------------------	----------

*1 Heart rate, cadence, and power measurements require pairing with each sensor.

*2 Requires separate left and right power sensors.

*3 Requires a smartphone with a built-in pressure sensor.

Batteries used/battery life

• Smart computer

Lithium battery (CR2032) x2 / Approximately 4 months
(When ISC-12 and HR-12 are paired and used for one hour a day.)

• Optional accessories

• Heart rate sensor (HR-12):

Lithium battery (CR2032) x1 / Approximately 5 months
(If used for 1 hour a day.)

• Speed sensor (ISC-12):

Lithium battery (CR2032) x1 / Approximately 5 months
(If used for 1 hour a day.)

* It may be shortened significantly when backlight is used frequently.

* As pre-installed battery is for monitor use, battery life may be shorter than that indicated above.

* Battery life may be reduced depending on the number of sensors paired and usage conditions.

Controller

Microcomputer (Crystal controlled oscillator)

Display

Liquid crystal display (LCD)

Current speed and cadence detection

Non-contact magnetic sensor (ISC-12)

* Current speed can also be measured via smartphone GPS.

Transmission/reception

Bluetooth SMART

Signal range

Approx. 30 m (The range will vary depending on weather and surroundings.)

Speed sensor tire circumference range

0100 to 3,999 mm

(Default value: 2096 mm)

Operating temperature range

0°C to 40°C

* Display visibility may deteriorate if used outside operating temperature range.

Dimensions/weight

• Smart computer

2-29/32" x 1-13/16" x 25/32" (74 x 46 x 20 mm) / 1.41 oz (40 g)

• Optional accessories

• Heart rate sensor (HR-12):

1-7/32" x 2-29/64" x 29/64" (31 x 62.5 x 11.8 mm) / 0.59 oz (16.6 g)

• Speed sensor (ISC-12):

2-49/64" x 3-25/64" x 59/64"
(70.4 x 86.3 x 23.5 mm) / 0.68 oz (19.2 g)
(With arm pointing down)

* Specifications and design are subject to change without notice.

Product warranty

2-year guarantee

- **Padrone Smart + unit**
- **ISC-12 Speed/cadence sensor**
- **HR-12 Heart rate sensor**
(Accessories and battery consumption excluded)

CatEye cycle computers are warranted to be free of defects from materials and workmanship for a period of two years from original purchase. If the product fails to work due to normal use, CatEye will repair or replace the defect at no charge. Service must be performed by CatEye or an authorized retailer. To return the product, pack it carefully and enclose the warranty certificate (proof of purchase) with instruction for repair. Please write or type your name and address clearly on the warranty certificate. Insurance, handling and transportation charges to CatEye shall be borne by person desiring service. For UK and REPUBLIC OF IRELAND consumers, please return to the place of purchase. This does not affect your statutory rights.

CATEYE CO., LTD.

2-8-25, Kuwazu, Higashi Sumiyoshi-ku, Osaka 546-0041 Japan

Attn: CATEYE Customer Service Section

Phone : (06)6719-6863

Fax : (06)6719-6033

E-mail : support@cateye.co.jp

URL : <http://www.cateye.com>

[For US Customers]

CATEYE AMERICA, INC.

2825 Wilderness Place Suite 1200, Boulder CO 80301-5494 USA

Phone : 303.443.4595

Toll Free : 800.5.CATEYE

Fax : 303.473.0006

E-mail : service@cateye.com

Legal Notices

Frequency Band: 2.4 GHz

Radiated Power: -2.6 dBm

Hereby, CATEYE Co., Ltd. declares that the radio equipment type CC-SC100B is in compliance with Directive 2014/53/EU. The full text of the EU declaration of conformity is available at the following internet address:

cateye.com/doc

Changes or modifications not expressly approved by the party responsible for compliance could void the user's authority to operate the equipment.

NOTE:

This equipment has been tested and found to comply with the limits for a Class B digital device, pursuant to part 15 of the FCC Rules. These limits are designed to provide reasonable protection against harmful interference in a residential installation. This equipment generates, uses and can radiate radio frequency energy and, if not installed and used in accordance with the instructions, may cause harmful interference to radio communications. However, there is no guarantee that interference will not occur in a particular installation. If this equipment does cause harmful interference to radio or television reception, which can be determined by turning the equipment off and on, the user is encouraged to try to correct the interference by one or more of the following measures:

- Reorient or relocate the receiving antenna.
- Increase the separation between the equipment and receiver.
- Connect the equipment into an outlet on a circuit different from that to which the receiver is connected.
- Consult the dealer or an experienced radio/TV technician for help.

Under Industry Canada regulations, this radio transmitter may only operate using an antenna of a type and maximum (or lesser) gain approved for the transmitter by Industry Canada. To reduce potential radio interference to other users, the antenna type and its gain should be so chosen that the equivalent isotropically radiated power (e.i.r.p) is not more than that necessary for successful communication.

Conformément à la réglementation d'Industrie Canada, le présent émetteur radio peut fonctionner avec une antenne d'un type d'un gain maximal (ou inférieur) approuvé pour l'émetteur par Industrie Canada. Dans le but de réduire les risques de brouillage radioélectrique à l'intention des autres utilisateurs, il faut choisir le type d'antenne et son gain de sorte que la puissance isotrope rayonnée équivalente (p.i.r.e) ne dépasse pas l'intensité nécessaire à l'établissement d'une communication satisfaisante.

This device complies with Industry Canada licence-exempt RSS standard(s).

Operation is subject to the following two conditions:

- (1) this device may not cause interference, and
- (2) this device must accept any interference, including interference that may cause undesired operation of the device.

Le présent appareil est conforme aux CNR d'Industrie Canada applicables aux appareils radio exempts de licence. L'exploitation est autorisée aux deux conditions suivantes:

- (1) l'appareil ne doit pas produire de brouillage, et

(2) l'utilisateur de l'appareil doit accepter tout brouillage radioélectrique subi, même si le brouillage est susceptible d'en compromettre le fonctionnement.

CAN ICES-3 (B) / NMB-3 (B)