



CATEYE STEALTH 10

CC-GL10

Quick Start

Click the button and follow the instructions.

Thank you for purchasing our cyclocomputer CATEYE STEALTH 10.

This Quick Start Manual explains how to set up the computer and how to install the unit on your bicycle.

Please set up the unit according to the specified procedure, then it will be ready for use as a cyclocomputer.



Before use, read the instruction manual that comes with the product thoroughly to the end to understand the functions of this unit, and to use it safely in a correct manner.

This PDF contains a movie file.

When you click on the movie screen, a message regarding security appears. Click the “**Trust in the text**” or “**Play**” button to close the message.

Click the screen again to play the movie.



CATEYE STEALTH 10

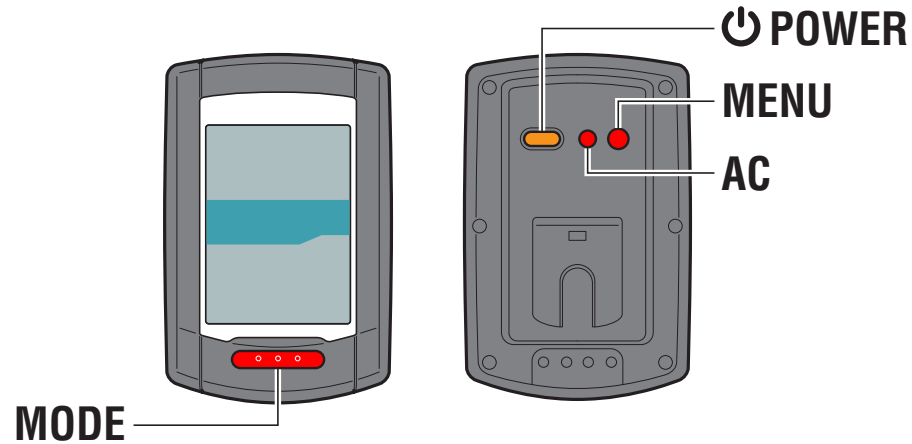
Quick Start Manual

[Contents](#)

Click on the item to view.

Operation of buttons

Set up the computer by operating the buttons as follows.
Check the button position before you start setting up.





CATEYE STEALTH 10

Quick Start Manual

Setting up the computer

Power ON

Formatting operation

Setting the speed unit

Setting the time zone

Setting the daylight saving time

Setting the clock display format

GPS search screen
(Setup completed)



Power ON

Pressing and holding the  button on the back of the computer for 2 seconds turns on the power, and the screen lights up.

Power ON



 **POWER**
(Press and hold)



CATEYE STEALTH 10

Quick Start Manual

Setting up the computer

Power ON

Formatting operation

Setting the speed unit

Setting the time zone

Setting the daylight saving time

Setting the clock display format

GPS search screen
(Setup completed)

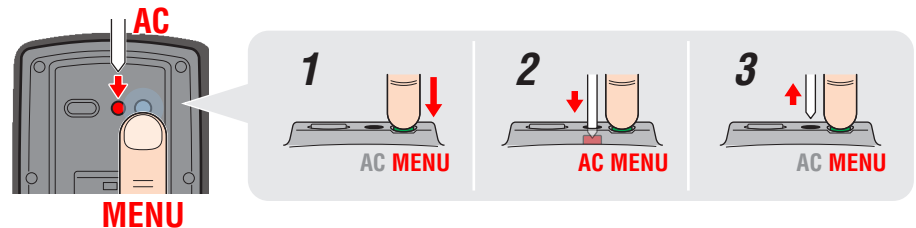


All screen items light up

Formatting operation

Press the **MENU** button on the back of the computer and the **AC** button simultaneously.

After all screen items light up, the display will be changed to the speed unit setting screen, and setup will start.



* Press and hold the **MENU** button for 3 seconds after releasing the **AC** button.



CATEYE STEALTH 10

Quick Start Manual

Setting up the computer

Power ON

Formatting operation

Setting the speed unit

Setting the time zone

Setting the daylight saving time

Setting the clock display format

GPS search screen
(Setup completed)



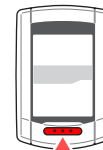
Setting the speed unit

Setting the speed unit

When the **MODE** button is pressed, either “**km/h**” or “**m/h (mile)**” is selected for the speed unit display. Select the display of your choice.

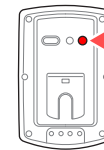
Press the **MENU** button to go to the next step “Selecting the time zone”.

km/h ↔ m/h (mph)



MODE

To the next step



MENU



CATEYE STEALTH 10

Quick Start Manual

Setting up the computer

Power ON

Formatting operation

Setting the speed unit

Setting the time zone

Setting the daylight saving time

Setting the clock display format

GPS search screen
(Setup completed)



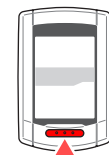
Setting the time zone

Setting the time zone

Select the code for the city nearest from your current location, while viewing the “Time zone list”.

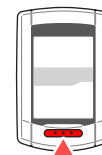
When the **MODE** button is pressed, the city code changes. After selecting the appropriate city code, press and hold the **MODE** button to go to the next step “Setting the daylight saving time”.

Switching the display



MODE

To the next step



MODE

(Press and hold)



CATEYE STEALTH 10

Quick Start Manual

Setting up the computer

Power ON

Formatting operation

Setting the speed unit

Setting the time zone

Setting the daylight saving time

Setting the clock display format

GPS search screen
(Setup completed)



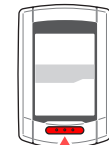
Setting the daylight saving time

Setting the daylight saving time

Change **ON/OFF** according to the period of daylight saving time, when you are on Daylight Saving Time.

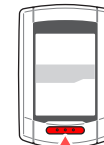
Press and hold the **MODE** button to go to the next step “Setting the clock display format”.

OFF ↔ ON



MODE

To the next step



MODE

(Press and hold)



CATEYE STEALTH 10

Quick Start Manual

Setting up the computer

Power ON

Formatting operation

Setting the speed unit

Setting the time zone

Setting the daylight saving time

Setting the clock display format

GPS search screen
(Setup completed)



Setting the clock display format

Setting the clock display format

When the **MODE** button is pressed, either “12h” or “24h” is selected for the clock display format. Select the display format of your choice.

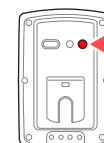
Press the **MENU** button to change to the GPS search screen.

12h ↔ 24h



MODE

Setting completed
To the GPS search screen



MENU



CATEYE STEALTH 10

Quick Start Manual

Setting up the computer

Power ON

Formatting operation

Setting the speed unit

Setting the time zone

Setting the daylight saving time

Setting the clock display format

GPS search screen
(Setup completed)



GPS search screen

Now, setup of the computer is completed.

When the bracket is not attached to your bicycle, return to Contents, click on “How to attach the bracket (movie formant)”, and then attach it according to the instructions.

Receiving the GPS signal or pressing the **MODE** button changes to the measurement screen.

* Date and clock are acquired from GPS signal; therefore, it is not necessary to enter them.

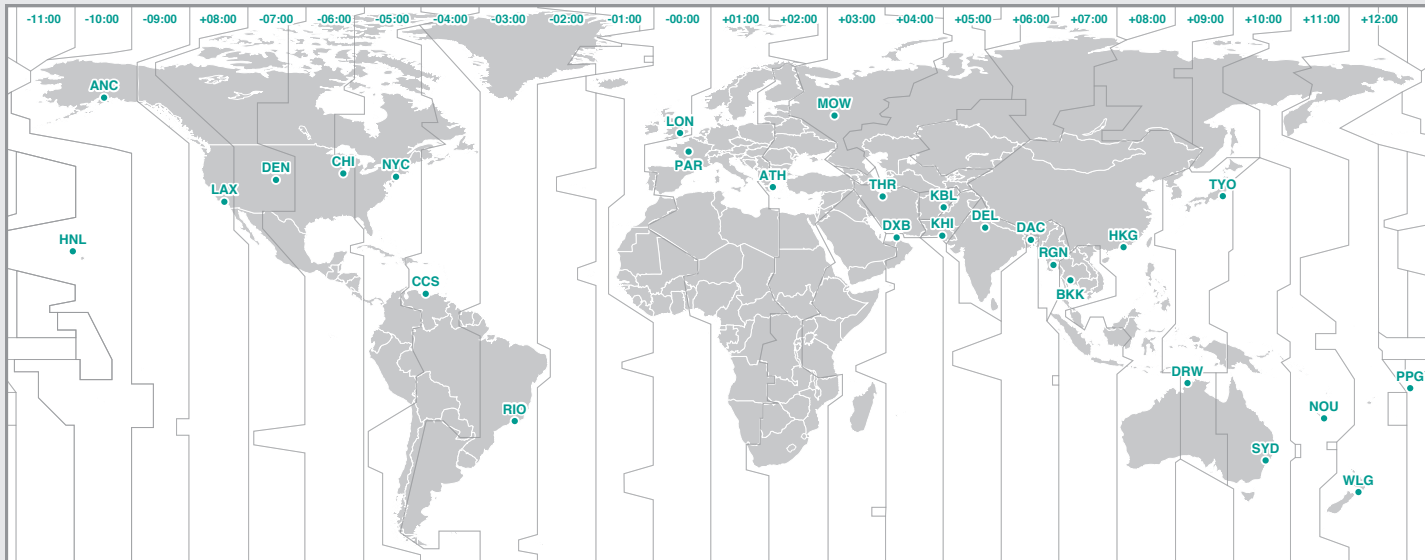


CATEYE STEALTH 10

Quick Start Manual

Setting up the computer

Time zone list



City code	City name	Time difference
LON	London	0
PAR	Paris	+1
ATH	Athens	+2
MOW	Moscow	+3
THR	Tehran	+3.5
DXB	Dubai	+4
KBL	Kabul	+4.5
KHI	Karachi	+5
DEL	Delhi	+5.5
DAC	Dhaka	+6
RGN	Yangon	+6.5
BKK	Bangkok	+7
HKG	Hong Kong	+8
TYO	Tokyo	+9
DRW	Darwin	+9.5
SYD	Sydney	+10
NOU	Noumea	+11
WLG	Wellington	+12
PPG	Pago Pago	-11
HNL	Honolulu	-10
ANC	Anchorage	-9
LAX	Los Angeles	-8
DEN	Denver	-7
CHI	Chicago	-6
NYC	New York	-5
CCS	Caracas	-4
RIO	Rio de Janeiro	-3



CATEYE STEALTH 10

Quick Start Manual

How to attach the bracket

How to attach the bracket

[FlexTight™]

Click on the screen to play the movie.

What is CATEYE Sync™

CATEYE Sync™ is a software application for PC, which mediates between this unit, your PC and the website.

- The trip data recorded with this unit can be loaded into your PC, and be uploaded to the website.
- The settings of this unit can be changed using your PC.

What is CATEYE Atlas™

CATEYE Atlas™ is a website where you can view the trips measured using this unit or INOU.

- The trip (measurement data) loaded using CATEYE Sync™ can be viewed on a map and a graph.
- By storing trips, you can use CATEYE Atlas™ as a database of your cycling life.
- You can disclose your trips to your friends or the public.



CATEYE STEALTH 10

Quick Start Manual

CATEYE Sync™ / CATEYE Atlas™

Click on the item to view.



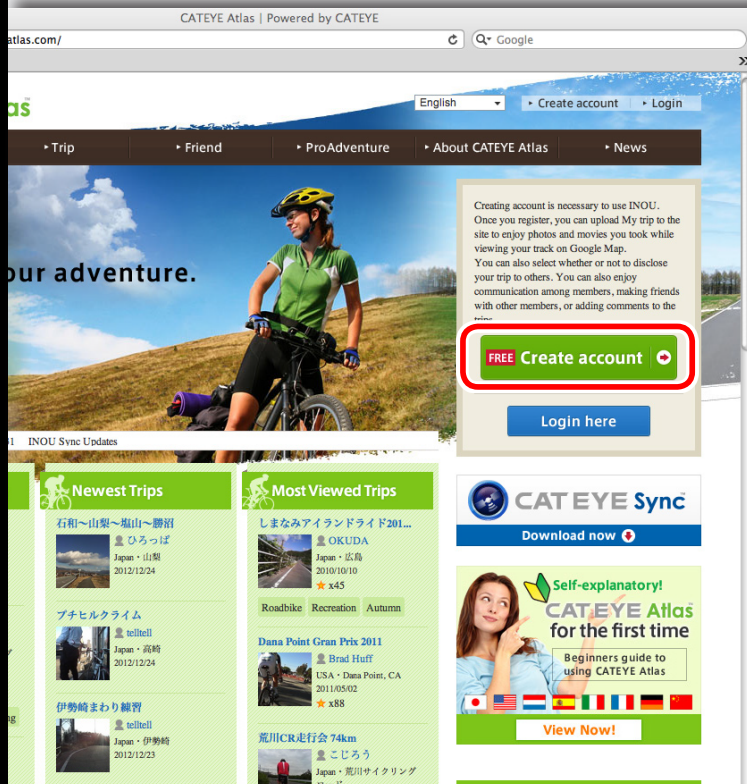
CATEYE STEALTH 10 Quick Start Manual

Setup of your PC

Membership
registration to
CATEYE Atlas™(1/3)

Installing
CATEYE Sync™

Setting
CATEYE Sync™



Membership registration to CATEYE Atlas™(1/3)

Start the browser to access to CATEYE Atlas™

- When you do not have an account:

Click on 

- When you have an account:

Membership registration is not required. Go to the next step “Installing CATEYE Sync™”.

- * You can use the same account when using CATEYE INOU and having registered membership.



CATEYE STEALTH 10 Quick Start Manual

Setup of your PC

Membership
registration to
CATEYE Atlas™(2/3)

Installing
CATEYE Sync™

Setting
CATEYE Sync™

Membership registration to CATEYE Atlas™ (2/3)

- 1 Confirm the Terms of Service, and then click on

Go to confirmation screen

- 2 Enter your e-mail address, and then click on **[Submit]**.

E-mail address

Submit

- 3 Open the e-mail arrived, and then click on the URL to enter the registration form.

Access the following URL, and proceed to the membership registration.

https://www.cateyeatlas.com/regist/entry?crypt_key=22487c4444cefe78fe25217bade717f3

Terms of service

1 Confirming the Terms of Service

Article 1 (Purpose)

1. These Terms and Conditions for Use of CATEYE Atlas (hereinafter referred to merely as "these Terms") shall apply to CATEYE CO.,LTD. (hereinafter referred to as "the Company") and you as the user of CATEYE Atlas (hereinafter referred to merely as "the User") in connection with the use of CATEYE

Interim membership registration

Send E-mail address → Issue registration form URL → Registration Form → Confirm → Completed

Enter your e-mail address.

The registration URL will be sent to the e-mail address entered.

2 Entering your e-mail address

E-mail address

Submit

No e-mail confirmation is received? It is reported after submitting from various sites and e-mail accounts.
Try with different e-mail address if no e-mail confirmation has been received.

3

E-mail arrived from
CATEYE Atlas™

Welcome to CATEYE Atlas

Access the following URL, and proceed to the membership registration.
https://www.cateyeatlas.com/regist/entry?crypt_key=22487c4444cefe78fe25217bade717f3

* This URL will be expired after 24 hours.

* When you have no idea about this E-mail, your E-mail address may have been entered by mistake. Please delete this E-mail.
* You cannot reply to this E-mail.



CATEYE STEALTH 10 Quick Start Manual

Setup of your PC

Membership
registration to
CATEYE Atlas™(3/3)

Installing
CATEYE Sync™

Setting
CATEYE Sync™

Membership registration to CATEYE Atlas™ (3/3)

- 4 Enter the required information, and then click on

Go to confirmation screen

* Be sure to enter the required items.

- 5 Confirm the registration, and then click on

Create my account

Now, your membership registration is completed.

After your membership registration is completed, go to the next step “Installing CATEYE Sync™”.

Terms of service

Send E-mail address > Issue registration form URL > **Registration Form** > Confirm > Completed

4 Enter the required information, and then click "Go to confirmation screen."

4 Entering the registration form

Screen name **Required** * Up to 100 characters

E-mail address **Required**

Password **Required** * 4 to 16 one-byte alphanumeric characters

Profile image **Optional** no file selected

Gender **Required** Male Female Privacy setting :

Registration form

Send E-mail address > Issue registration form URL > **5 Confirming the registration** > Completed

Confirm that the following information is correct. If correct, press the "Create my account" button. Otherwise, press the "Back" button to change.

Screen name **Required**

E-mail address **Required**

Password **Required**



CATEYE STEALTH 10 Quick Start Manual

Setup of your PC

Membership
registration to
CATEYE Atlas™

Installing
CATEYE Sync™
(1/2)

Setting
CATEYE Sync™

Installing CATEYE Sync™ (1/2)

- 1 Click on the banner of CATEYE Sync™ from the top page of CATEYE Atlas™.



The download page will open.

CATEYE Atlas | Powered by CATEYE

English | Create account | Login

Trip | Friend | ProAdventure | About CATEYE Atlas | News

ur adventure.

Creating account is necessary to use INOU. Once you register, you can upload My trip to the site to enjoy photos and movies you took while viewing your track on Google Map. You can also select whether or not to disclose your trip to others. You can also enjoy communication among members, making friends with other members, or adding comments to the trips.

FREE Create account

Login here

INOU Sync Updates

Newest Trips

石和～山梨～嵐山～勝沼
● ひろつば
Japan · 山梨
2012/12/24

ブチヘルクライム
● telhell
Japan · 高崎
2012/12/24

伊勢崎まわり練習
● telhell
Japan · 伊勢崎
2012/12/23

Most Viewed Trips

しまなみアイランドライド201...
● OKUDA
Japan · 広島
2010/10/10
★x45
Roadbike Recreation Autumn

Dana Point Gran Prix 2011
● Brnd Huff
USA · Dana Point, CA
2011/05/02
★x88

荒川CR走行会 74km
● こじろう
Japan · 荒川サイクリング
ロード

Self-explanatory!
CATEYE Atlas
for the first time
Beginners guide to
using CATEYE Atlas

View Now!



CATEYE STEALTH 10 Quick Start Manual

Setup of your PC

Membership
registration to
CATEYE Atlas™

Installing
CATEYE Sync™
(2/2)

Setting
CATEYE Sync™

CATEYE Atlas | Powered by CATEYE

om/app/

Q Google

CATEYE Sync

load

SD card

site to enjoy photos and movies you took while viewing your track on Google Map. You can also select whether or not to disclose your trip to others. You can also enjoy communication among members, making friends with other members, or adding comments to the trips.

FREE Create account

Login here

CAT EYE Sync

Download now

Self-explanatory!
CATEYE Atlas
for the first time

Beginners guide to using CATEYE Atlas

View Now!

everyone Check Tweets!

2 Download for Windows version

for Windows Download

for Mac Download

2 Download for Mac version

Installing CATEYE Sync™ (2/2)

- 2 Click the **[Download]** button for Windows version or Mac version according to your PC (OS).



CATEYE Sync™ will start being downloaded.

- 3 Double-click on the execution file downloaded. Install CATEYE Sync™ according to the instruction displayed on the screen. After CATEYE Sync™ is installed, go to the next step “Setting CATEYE Sync™”.



CATEYE STEALTH 10 Quick Start Manual

Setup of your PC

Membership
registration to
CATEYE Atlas™

Installing
CATEYE Sync™

Setting
CATEYE Sync™
(1/2)

Setting CATEYE Sync™(1/2)



1 CATEYE Sync™ icon

1 Start CATEYE Sync™.

Double-click the shortcut [**CATEYE Sync™**] to start CATEYE Sync™.



2 Starting CATEYE Sync™

2 Click on [**Q series / STEALTH**] .

The menu screen appears.





CATEYE STEALTH 10 Quick Start Manual

Setup of your PC

Membership
registration to
CATEYE Atlas™

Installing
CATEYE Sync™

Setting
CATEYE Sync™
(2/2)

Setting CATEYE Sync™(2/2)

- 3 Click on **[Settings]**.

The setting screen appears.

- 4 Click on **[Login setting]** and enter your e-mail address and password.

Enter correctly the registered e-mail address and password.

- 5 Click on **[Setting]**.

Login setting of CATEYE Sync™ is completed.

Now, setup of the computer is completed.

Return to the contents of CATEYE Sync™/Atlas™ and see “Uploading, editing and sharing the trip” and “Changing the computer configuration”.

3 Click on **[Setting]**

4 Enter your e-mail address and password

5 Setting completed

Account Setting

Erase data Read Apply

share your adventure.
CATEYE Atlas

CATEYE
©CATEYE CO.,LTD. ALL RIGHTS RESERVED.



CATEYE STEALTH 10

Quick Start Manual

Uploading the trip

* The site screen in the video is showing a trip recorded with the Stealth 50 for an example.

Uploading the trip

Click on the screen to play the movie.



CATEYE STEALTH 10

Quick Start Manual

Editing and sharing the trip

* The site screen in the video is showing a trip recorded with the Stealth 50 for an example.

Editing and sharing the trip

Click on the screen to play the movie.



CATEYE STEALTH 10

Quick Start Manual

Changing the computer configuration

Changing the computer configuration

Click on the screen to play the movie.