



INTRODUCTION

Before using the light, please read this manual and the attached "NiMH Batteries" thoroughly, and keep them for future reference.

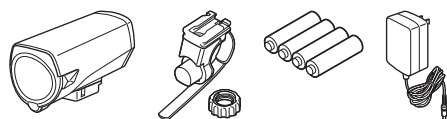
FOR SAFE OPERATION

- Before your trip, please make sure the light is firmly mounted to the bracket, it lights up, and the light is not blocked by baggage, etc.
- Do not place it within children's reach.
- In preparation for unexpected battery shutoff, we recommend you carry a spare battery.
- Mount the light unit more than 7 cm away from the wireless meter. When it is mounted too close, the transmission may be affected adversely.
- This product is water-resistant under normal daily use and can be used in the rain. However, do not intentionally submerge it in water.
- If the light unit or parts become dirty with mud, etc., clean with a soft cloth which is moistened with mild soap. Never apply paint thinner, benzine or alcohol; damage will result.

Before Initial Use

This unit is shipped with a small charge to check the light. Be sure to charge it before use, according to the instructions "How to charge".

COMPONENTS



Light unit
FlexTight™ bracket (H-34N)
Rechargeable battery x 4
Battery charger
(Various forms according to the specifications)

SPECIFICATIONS

Light sourceHigh-intensity white LED x 1
BatteryAA Ni-MH 2.2Ah (GP220AAH) rechargeable battery x 4, or AA alkaline battery x 4
Battery chargerCHA-2.2AH-4.8V (Only the rechargeable batteries supplied can be used.)
Operating time (Alkaline battery)
.....Hi : Approx. 5 hours (Approx. 2 hours),
.....Low : Approx. 15 hours (Approx. 9 hours),
.....Flash : Approx. 60 hours (Approx. 30 hours)
Standard charging time...Approx. 5-7 hours
Temperature range...Charging : 41°F - 104°F (5°C - 40°C),
.....Operating : 14°F - 104°F (-10°C - 40°C)
Recharge/discharge number of times
.....About 300 times (until the rated capacity drops to 50%)
Dimensions/weight...4-1/2" x 2-13/64" x 2-3/32" (114 x 56 x 53 mm) / 8 oz (227 g) (Including rechargeable batteries supplied)
*The specifications and design are subject to change without notice.

LIMITED WARRANTY

2-year Warranty: Light unit / Battery charger (Deterioration of the battery is excluded.)

CatEye products are warranted to be free of defects from materials and workmanship for a period of 2 years from original purchase. If the product fails to work during normal use, CatEye will repair or replace the defect at no charge. Service must be performed by CatEye or an authorized retailer. To return the product, pack it carefully and enclose the warranty certificate (proof of purchase) with instruction for repair. Please write or type your name and address clearly on the warranty certificate. Insurance, handling and transportation charges to CatEye shall be borne by person desiring service. For UK and REPUBLIC OF IRELAND consumers, please return to the place of purchase. This does not affect your statutory rights.

CATEYE CO., LTD.

2-8-25, Kuwazu, Higashi Sumiyoshi-ku, Osaka 546-0041 Japan
Attn: CATEYE Customer Service
Phone : (06)6719-6863
Fax : (06)6719-6033
E-mail : support@cateye.co.jp
URL : http://www.cateye.com

[For US Customers]

CATEYE AMERICA, INC.
2825 Wilderness Place Suite 1200,
Boulder CO80301-5494 USA
Phone : 303.443.4595
Toll Free : 800.5CATEYE
Fax : 303.473.0006
E-mail : service@cateye.com

SPARE PARTS

5338827N



FlexTight™
bracket
(H-34N)



CHA-2.2AH-4.8V

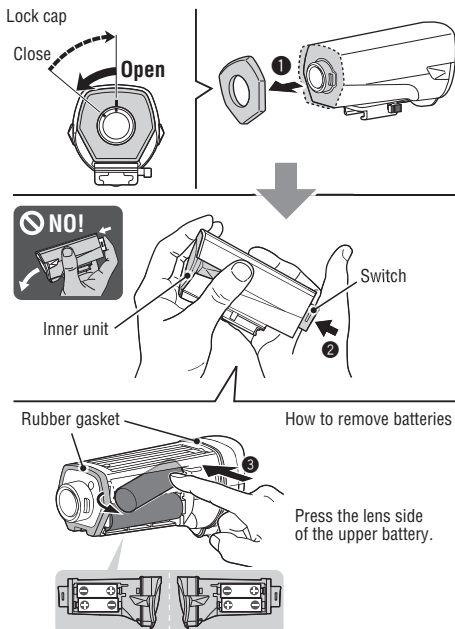
UL : 5336760
UK : 5336761
EC : 5336762
AS : 5336763

5341891



Special nickel-hydride rechargeable battery x 4 (Ni-MH 2.2Ah GP220AAH)

HOW TO REPLACE BATTERY



AA alkaline batteries can be used for this unit.

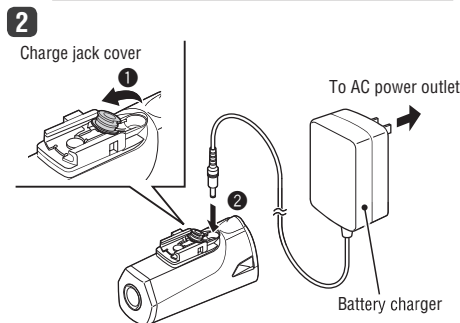
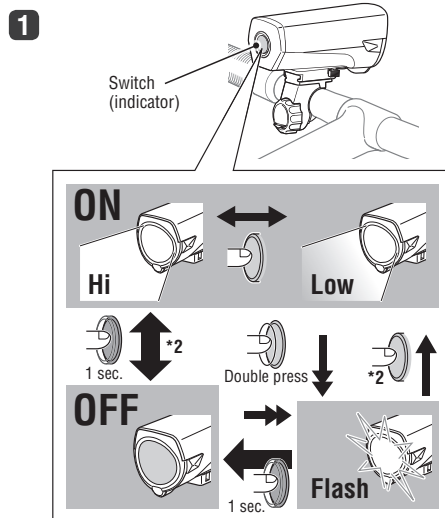
- 1 Turn the lock cap on the back of the light counterclockwise to remove.
- 2 Press the switch slowly, and pull out the inner unit from the front.
- 3 Install the lower battery first. Remove the upper battery first by pressing the arrowed point as shown.
- 4 After replacement, check that the two rubber gaskets for the inner unit are in place, place it into the body, and fix it with the lock cap.

DANGER!! Dry batteries (primary battery) cannot be charged.

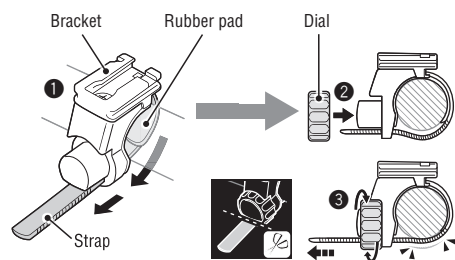
CAUTION!!

- To pull out the inner unit from the light, be sure to hold the lens. Otherwise, the inner unit may fall out and become damaged.
- Do not use a dry battery (primary battery) together with a rechargeable battery. Do not use a new battery in combination with an old battery.
- Be sure to install batteries in the correct direction.
- Install the two rubber gaskets correctly to maintain waterproof features.
- Remove and store batteries when you will not use the light for a long period of time. Otherwise, batteries may leak liquid, which may result in failure.

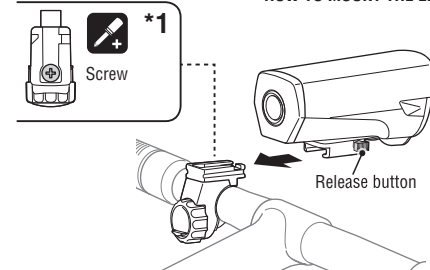
HOW TO USE



HOW TO MOUNT



HOW TO MOUNT THE LIGHT



- 1 Wind the bracket strap around the handlebar, and put the strap through the opening.
- 2 Screw the dial into the bracket to secure it temporarily. * Insert the light unit to the bracket until it clicks, and adjust the beam angle. (Refer to "HOW TO MOUNT THE LIGHT")
- 3 Securely tighten the dial, and cut off any excess bracket strap. * To remove the light unit, pull it out forward while pressing the button. * To re-adjust the beam angle, loosen the dial enough to move the bracket, and securely tighten it after adjustment.

CAUTION!!

- Be sure to tighten the dial by hand. When you tighten it too hard with a tool, the screw thread may be stripped.
- Check the dial and screw (*) on the bracket periodically, and use them without any loosening.
- Round off the cut edge of the bracket strap to prevent injury.

1 Switch operation (switching the lighting mode)

The ON/OFF and lighting modes are selected using a switch.

Switch operation	Standard operating time (For alkaline batteries)
ON ↔ OFF : Long press	Hi : Approx. 5 hours (Approx. 2 hours)
Hi ↔ Low : Single press	Low : Approx. 15 hours (Approx. 9 hours)
Flash : Quick double press (Flash even from OFF)	Flash : Approx. 60 hours (Approx. 30 hours)

*2 When returning from Flash to ON (Hi or Low), it returns to the ON mode used previously.

Remaining battery capacity

When the switch (indicator) lights up, the remaining battery level is low. Charge or replace the battery as soon as possible.

2 How to charge

DANGER!!

- Do not to charge when dry batteries are installed.
- Be sure to use CatEye rechargeable battery and battery charger. The battery charger is indoor use only.
- Commercially available rechargeable batteries should be charged with a compatible battery charger.

- 1 Open the charge jack cover at the back of the light unit to connect the battery charger plug.
- 2 Plug the battery charger to an AC outlet. When the switch (indicator) lights up, charging starts. * When the switch flashes, it indicates a charge error. Disconnect the plug, and reconnect it.
- 3 When the switch lights off, charging is completed. Remove the plug, and close the charge jack cover.

Switch (indicator) state	Standard charging time
ON : Charging OFF : Charging is completed	Approx. 5-7 hours
Flash : Charge error	

* Charging and lighting times are approximate values, and will vary by environmental and user conditions.