



RECHARGEABLE HEADLIGHT

Nano Shot

HL-EL620RC



ENG



Copyright© 2012 CATEYE Co., Ltd. EL620RC-120521 3

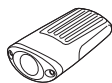
Before using the light, please read this manual and the attached "Lithium-ion Batteries" thoroughly, and keep them for future reference.

CAUTION!

- Before your trip, please make sure the light is firmly mounted to the bracket, it lights up, and the light is not blocked by baggage, etc.
- Do not place it within children's reach.
- In preparation for unexpected battery shutdown, we recommend you carry a spare light.
- Mount the light unit more than 7 cm away from the wireless meter. When it is mounted too close, the transmission may be affected adversely.
- This product is water-resistant under normal daily use and can be used in the rain. However, do not intentionally submerge it in water.
- If the light unit or parts become dirty with mud, etc., clean with a soft cloth which is moistened with mild soap. Never apply paint thinner, benzene or alcohol; damage will result.
- Remove the used battery and bring it with the connector covered with an insulation tape to the store supporting rechargeable battery recycling.

1 Before Initial Use

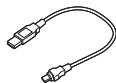
This unit is shipped with a small charge to check the light. Be sure to charge it before use, according to the instructions "HOW TO CHARGE".



Light unit



FlexTight™ bracket (H-34N)



USB cable

1 HOW TO CHARGE

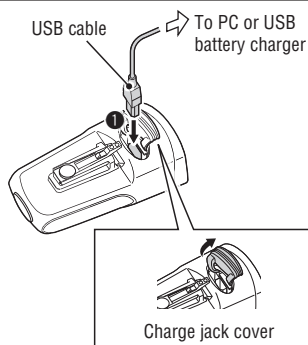
- 1 Remove the charging jack cover on the back of the light, and connect the light unit and your PC, or a commercial USB battery charger with the USB cable. The switch lights up, and charging starts.

* When your PC is in sleep state, the unit cannot be charged.

* With USB1.0, it takes time to charge.

- 2 When the switch lights off, charging is completed. Remove the USB cable, and install the charging jack cover.

* Charging and lighting times are approximate values, and will vary by environmental and user conditions.



Switch (indicator) state	Standard charging time (For USB2.0)
ON : Charging	Approx. 3.5 hours
OFF : Charging is completed	

2 HOW TO MOUNT

- 1 Wind the bracket strap around the handlebar, and put the strap through the opening.

- 2 Screw the dial into the bracket to secure it temporarily.

* Insert the light unit to the bracket until it clicks, and adjust the beam angle. (Refer to "HOW TO MOUNT THE LIGHT")

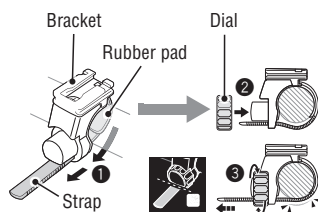
- 3 Securely tighten the dial, and cut off any excess bracket strap.

* To remove the light unit, pull out it forward while pressing the button.

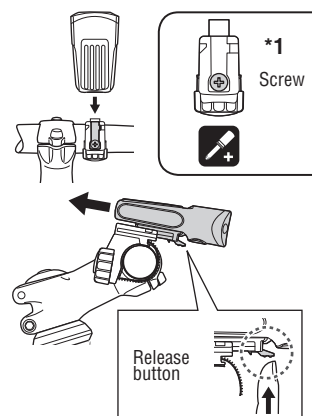
* To re-adjust the beam angle, loosen the dial enough to move the bracket, and securely tighten it after adjustment.

CAUTION!:

- Be sure to tighten the dial by hand. When you tighten it too hard with a tool, the screw thread may be stripped.
- Check the dial and screw (*1) on the bracket periodically, and use them without any loosening.
- Round off the cut edge of the bracket strap to prevent injury.



HOW TO MOUNT THE LIGHT

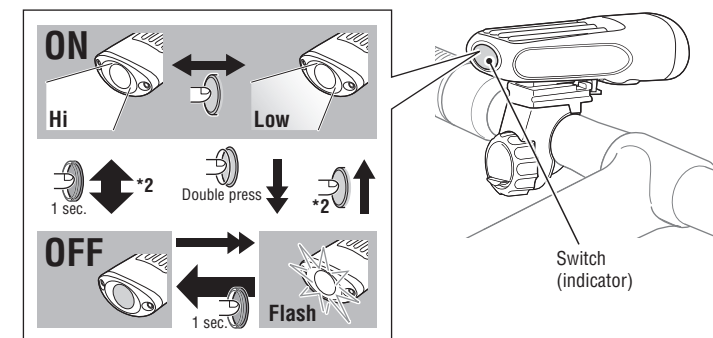


3 HOW TO USE

Switch operation (switching the lighting mode)

The ON/OFF and lighting modes are selected using a switch.

Switch operation	Standard operating time
ON ↔ OFF : Long press	Hi : Approx. 1.5 hours
Hi ↔ Low : Single press	Low : Approx. 3 hours
Flash : Quick double press (Flash even from OFF)	Flash : Approx. 12 hours



*2 When returning from ON to OFF, or Flash to ON (Hi or Low), it returns to the lighting mode used previously.

Remaining battery capacity

When the switch (indicator) lights up, the remaining battery level is low. Please charge as soon as possible.

HOW TO REPLACE THE BATTERY

When the operating time decreases significantly, the battery life is close to an end. Please contact CatEye local distributor listed on our website www.cateye.com or CatEye for replacing battery.

CAUTION!: The light unit is a precision device. Never disassemble it.

SPECIFICATIONS

Light source	High-intensity white LED x 1
Battery	Li-ion 3.7V 1110mAh
Charge	Mini USB plug
Operating time	Hi : Approx. 1.5 hours
	Low : Approx. 3 hours
	Flash : Approx. 12 hours
Standard charging time	Approx. 3.5 hours (USB2.0)
Temperature range	Charging : 41°F – 104°F (5°C – 40°C)
	Operating : 14°F – 104°F (-10°C – 40°C)
Recharge/discharge number of times	About 300 times (until the rated capacity drops to 70%)
Dimensions/weight	3-25/64" x 1-31/32" x 1-17/64" (86 x 50 x 32 mm) / 2.8 oz (80 g) (Including rechargeable batteries supplied)

* The specifications and design are subject to change without notice.

LIMITED WARRANTY

2-year Warranty: Light unit only (Deterioration of the battery is excluded.)

CatEye products are warranted to be free of defects from materials and workmanship for a period of 2 years from original purchase. If the product fails to work during normal use, CatEye will repair or replace the defect at no charge. Service must be performed by CatEye or an authorized retailer. To return the product, pack it carefully and enclose the warranty certificate (proof of purchase) with instruction for repair. Please write or type your name and address clearly on the warranty certificate. Insurance, handling and transportation charges to CatEye shall be borne by person desiring service. For UK and REPUBLIC OF IRELAND consumers, please return to the place of purchase. This does not affect your statutory rights.

Please register your CatEye product on the website.

<http://www.cateye.com/en/support/regist/>

CAT EYE CO., LTD.

2-8-25, Kuwazu, Higashi Sumiyoshi-ku,
Osaka 546-0041 Japan
Attn: CATEYE Customer Service Section
Phone : (06)6719-6863
Fax : (06)6719-6033
E-mail : support@cateye.co.jp
URL : <http://www.cateye.com>

[For US Customers]

CATEYE AMERICA, INC.
2825 Wilderness Place Suite 1200,
Boulder CO80301-5494 USA
Phone : 303.443.4595
Toll Free : 800.5CATEYE
Fax : 303.473.0006
E-mail : service@cateye.com

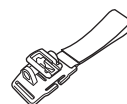
SPARE PARTS

5338827N
FlexTight™ bracket (H-34N)



OPTION PARTS

5341831N
Helmet mount



DISPOSE BATTERY

