



# CATEYE

## VELO WIRELESS

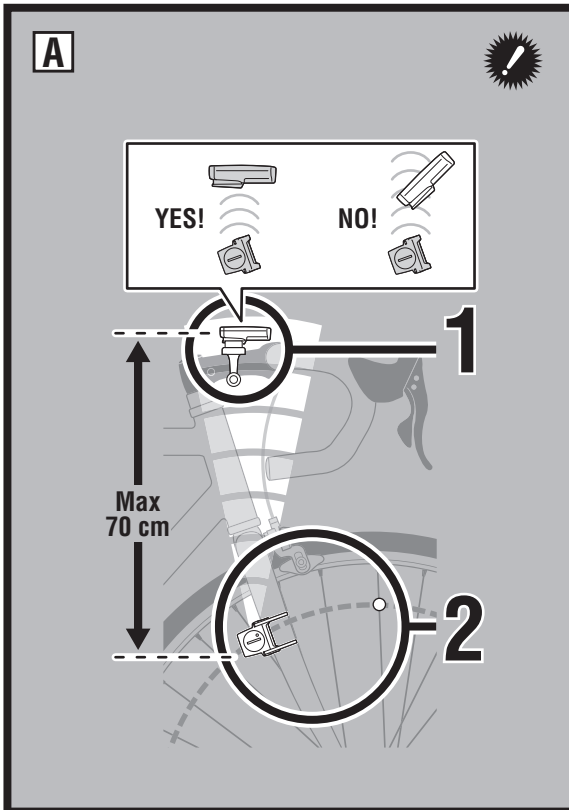
### CYCLOCOMPUTER CC-VT200W

#### Owner's Manual

U.S. Pat. Nos. 5236759/5308419/6957926 Pat./Design Pat. Pending  
 Copyright© 2010 CATEYE Co., Ltd.  
 CCVT20W-100210 066600900 2

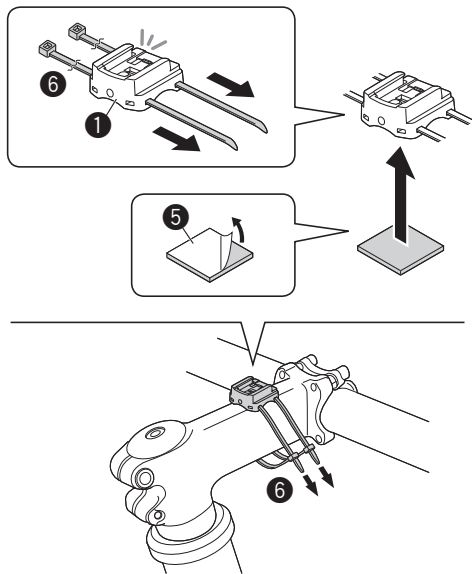


## INSTALL

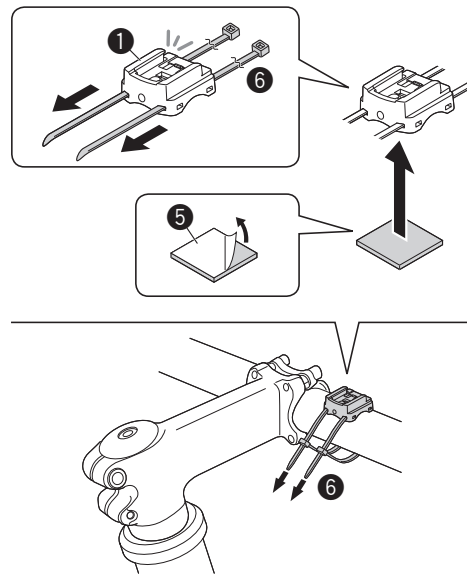


## 1 Bracket

[Stem]

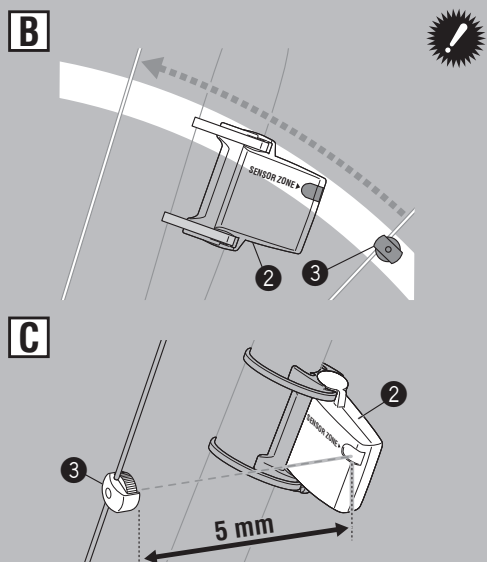
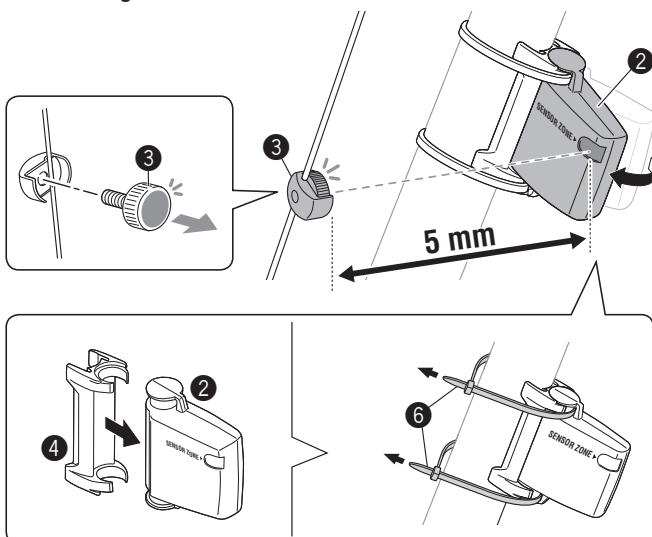


## [Handlebar]



or

## 2 Sensor/Magnet

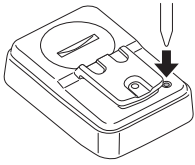


HU

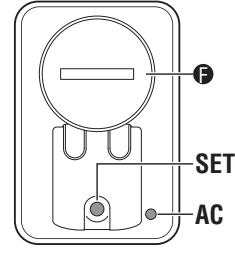
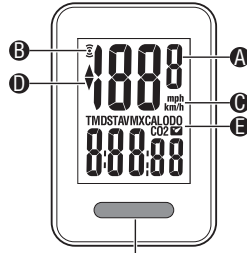
CC-VT200W VELO WIRELESS

# SETTING

## 1 | All Clear



TM = 0  
DST = 0  
AV = 0  
MX = 0  
ODO = 0  
 = 0



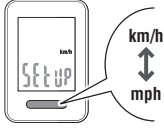
MODE

- A Pillanatnyi sebesség
- B Jel fogadása az érzékelőről ikon
- C Sebesség mértékegysége km/h mph
- D Tempó nyíl ▲▼

- E Üzem mód-választás
  - F Elemtartó rekesz fedele
- \* Részleteket ld. „Szerkezeti egységek neve” c. részben.

## 2 | Select km/h or mph

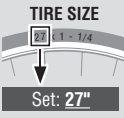
Set: km/h



Register the setting

## 3 | Tire Size

[Quick setting size]



Set: 27"

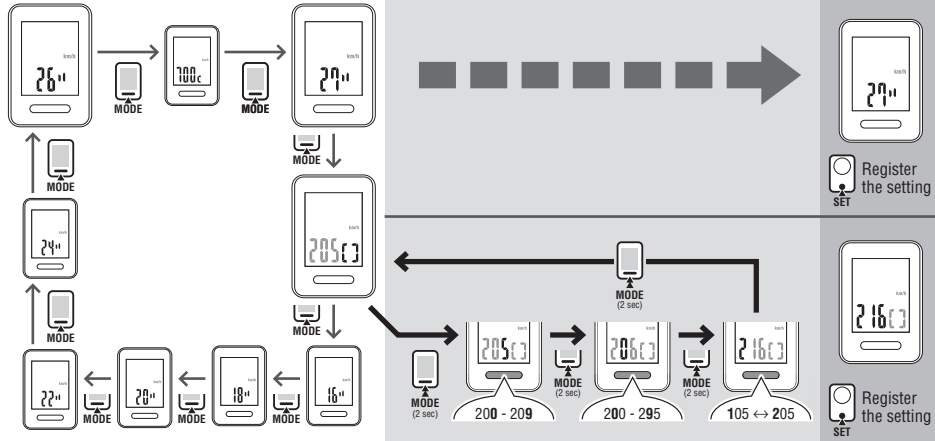
or

[Detailed setting size]



ETRT0	Tire size	L (cm)
28-630	27x1-1/8	216
32-630	27x1-1/4	216
37-630	27x1-3/8	217
41-630	27x1-1/2	217
46-630	27x1-3/4	217
51-630	27x2	217
56-630	27x2-1/8	217
61-630	27x2-1/4	217
66-630	27x2-1/2	217
71-630	27x2-3/4	217
76-630	27x3	217
81-630	27x3-1/8	217
86-630	27x3-1/4	217
91-630	27x3-1/2	217
96-630	27x3-3/4	217
101-630	27x4	217

Set: 216

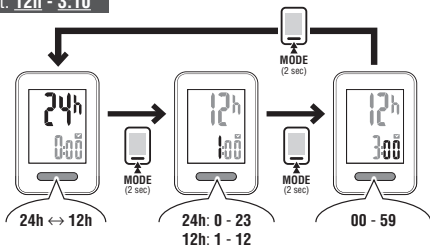


Register the setting

Register the setting

## 4 | Clock Setting

Set: 12h - 3:10

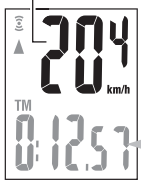


Register the setting (Finish)

# OPERATION FLOW

### Current Speed

0.0(4.0) - 105.9 km/h  
[0.0(3.0) - 65.9 mph]



TM 0:12:57  
TM 0:00.00 - 9:59.59

DST 1.23  
DST 0.00 - 999.99 km [mile]

AV 14.6  
AV \*1 0.0 - 105.9 km/h  
[0.0 - 65.9 mph]

MX 30.1  
MX 0.0(4.0) - 105.9 km/h  
[0.0(3.0) - 65.9 mph]

ODO 12345  
ODO 0 - 99999 km [mile]

15:38  
0:00 - 23:59  
[1:00 - 12:59]

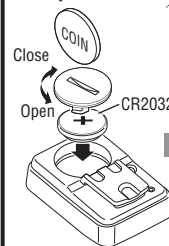
### Data Reset



TM = 0  
DST = 0  
AV = 0  
MX = 0

### Battery

#### Computer



SETTING  
1. All clear

#### Sensor

