



# CATEYE STEALTH 10

## CC-GL10

### Quick Start

---

Click the button and follow the instructions.

Thank you for purchasing our cyclocomputer CATEYE STEALTH 10.

This Quick Start Manual explains how to set up the computer and how to install the unit on your bicycle.

Please set up the unit according to the specified procedure, then it will be ready for use as a cyclocomputer.



**Before use, read the instruction manual that comes with the product thoroughly to the end to understand the functions of this unit, and to use it safely in a correct manner.**

This PDF contains a movie file.

When you click on the movie screen, a message regarding security appears. Click the “**Trust in the text**” or “**Play**” button to close the message.

Click the screen again to play the movie.



# CATEYE STEALTH 10

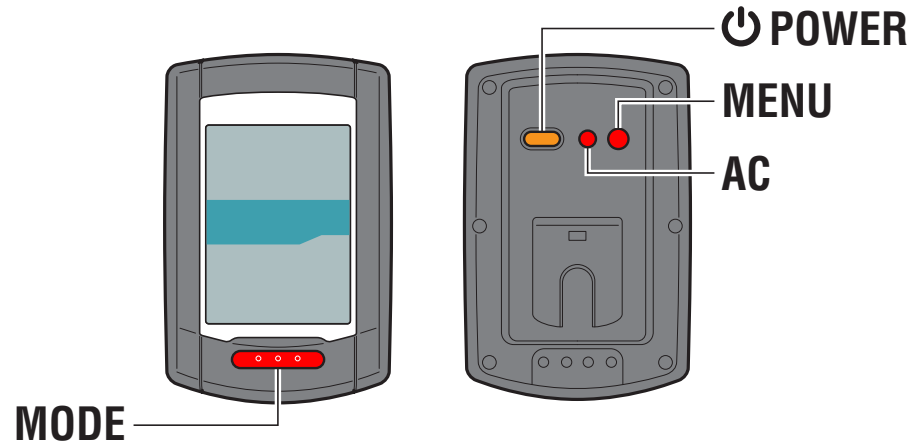
## Quick Start Manual

[Contents](#)

Click on the item to view.

# Operation of buttons

Set up the computer by operating the buttons as follows.  
Check the button position before you start setting up.





# CATEYE STEALTH 10

## Quick Start Manual

### Setting up the computer

#### Power ON

Formatting operation

Setting the speed unit

Setting the time zone

Setting the daylight saving time

Setting the clock display format

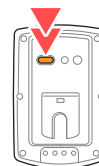
GPS search screen  
(Setup completed)



#### Power ON

Pressing and holding the  button on the back of the computer for 2 seconds turns on the power, and the screen lights up.

#### Power ON



 **POWER**

(Press and hold)



# CATEYE STEALTH 10

## Quick Start Manual

## Setting up the computer

Power ON

Formatting operation

Setting the speed unit

Setting the time zone

Setting the daylight saving time

Setting the clock display format

GPS search screen  
(Setup completed)

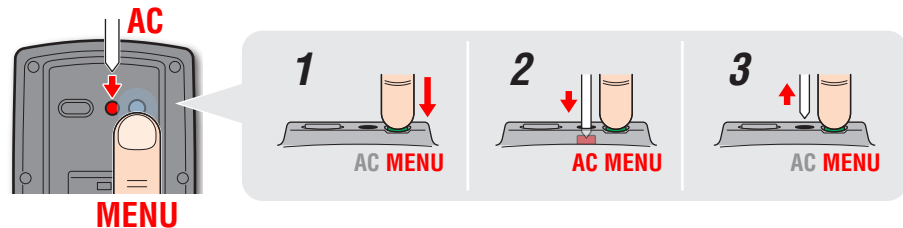


All screen items light up

### Formatting operation

Press the **MENU** button on the back of the computer and the **AC** button simultaneously.

After all screen items light up, the display will be changed to the speed unit setting screen, and setup will start.



\* Press and hold the **MENU** button for 3 seconds after releasing the **AC** button.



# CATEYE STEALTH 10

## Quick Start Manual

### Setting up the computer

Power ON

Formatting operation

Setting the speed unit

Setting the time zone

Setting the daylight saving time

Setting the clock display format

GPS search screen  
(Setup completed)



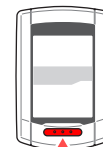
Setting the speed unit

### Setting the speed unit

When the **MODE** button is pressed, either “**km/h**” or “**m/h (mile)**” is selected for the speed unit display. Select the display of your choice.

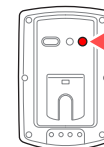
Press the **MENU** button to go to the next step “Selecting the time zone”.

km/h ↔ m/h (mph)



**MODE**

To the next step



**MENU**



# CATEYE STEALTH 10

## Quick Start Manual

## Setting up the computer

Power ON

Formatting operation

Setting the speed unit

Setting the time zone

Setting the daylight saving time

Setting the clock display format

GPS search screen  
(Setup completed)



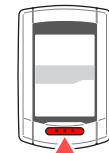
Setting the time zone

### Setting the time zone

Select the code for the city nearest from your current location, while viewing the “Time zone list”.

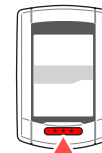
When the **MODE** button is pressed, the city code changes. After selecting the appropriate city code, press and hold the **MODE** button to go to the next step “Setting the daylight saving time”.

Switching the display



**MODE**

To the next step



**MODE**

(Press and hold)



# CATEYE STEALTH 10

## Quick Start Manual

### Setting up the computer

Power ON

Formatting operation

Setting the speed unit

Setting the time zone

Setting the daylight saving time

Setting the clock display format

GPS search screen  
(Setup completed)



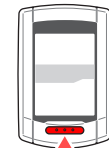
Setting the daylight saving time

### Setting the daylight saving time

Change **ON/OFF** according to the period of daylight saving time, when you are on Daylight Saving Time.

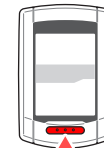
Press and hold the **MODE** button to go to the next step “Setting the clock display format”.

OFF ↔ ON



**MODE**

To the next step



**MODE**

(Press and hold)



# CATEYE STEALTH 10

## Quick Start Manual

### Setting up the computer

Power ON

Formatting operation

Setting the speed unit

Setting the time zone

Setting the daylight saving time

Setting the clock display format

GPS search screen  
(Setup completed)



Setting the clock display format

### Setting the clock display format

When the **MODE** button is pressed, either “12h” or “24h” is selected for the clock display format. Select the display format of your choice.

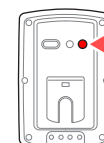
Press the **MENU** button to change to the GPS search screen.

12h ↔ 24h



**MODE**

Setting completed  
To the GPS search screen



**MENU**



# CATEYE STEALTH 10

## Quick Start Manual

### Setting up the computer

Power ON

Formatting operation

Setting the speed unit

Setting the time zone

Setting the daylight saving time

Setting the clock display format

GPS search screen  
(Setup completed)



GPS search screen

Now, setup of the computer is completed.

When the bracket is not attached to your bicycle, return to Contents, click on “How to attach the bracket (movie format)”, and then attach it according to the instructions.

Receiving the GPS signal or pressing the **MODE** button changes to the measurement screen.

\* Date and clock are acquired from GPS signal; therefore, it is not necessary to enter them.

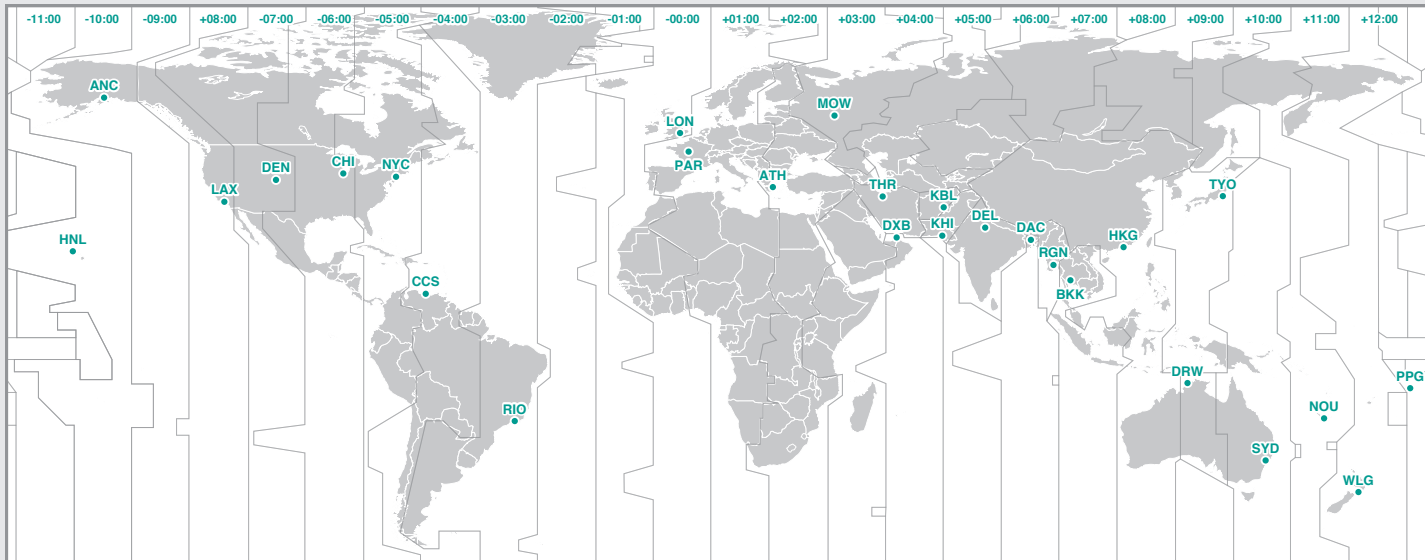


# CATEYE STEALTH 10

## Quick Start Manual

### Setting up the computer

### Time zone list



City code	City name	Time difference
LON	London	0
PAR	Paris	+1
ATH	Athens	+2
MOW	Moscow	+3
THR	Tehran	+3.5
DXB	Dubai	+4
KBL	Kabul	+4.5
KHI	Karachi	+5
DEL	Delhi	+5.5
DAC	Dhaka	+6
RGN	Yangon	+6.5
BKK	Bangkok	+7
HKG	Hong Kong	+8
TYO	Tokyo	+9
DRW	Darwin	+9.5
SYD	Sydney	+10
NOU	Noumea	+11
WLG	Wellington	+12
PPG	Pago Pago	-11
HNL	Honolulu	-10
ANC	Anchorage	-9
LAX	Los Angeles	-8
DEN	Denver	-7
CHI	Chicago	-6
NYC	New York	-5
CCS	Caracas	-4
RIO	Rio de Janeiro	-3



# CATEYE STEALTH 10

## Quick Start Manual

How to attach the bracket

### How to attach the bracket

[FlexTight™]

Click on the screen to play the movie.

## **What is CATEYE Sync™**

CATEYE Sync™ is a software application for PC, which mediates between this unit, your PC and the website.

- The trip data recorded with this unit can be loaded into your PC, and be uploaded to the website.
- The settings of this unit can be changed using your PC.

## **What is CATEYE Atlas™**

CATEYE Atlas™ is a website where you can view the trips measured using this unit or INOU.

- The trip (measurement data) loaded using CATEYE Sync™ can be viewed on a map and a graph.
- By storing trips, you can use CATEYE Atlas™ as a database of your cycling life.
- You can disclose your trips to your friends or the public.



# CATEYE STEALTH 10

## Quick Start Manual

CATEYE Sync™ / CATEYE Atlas™

Click on the item to view.



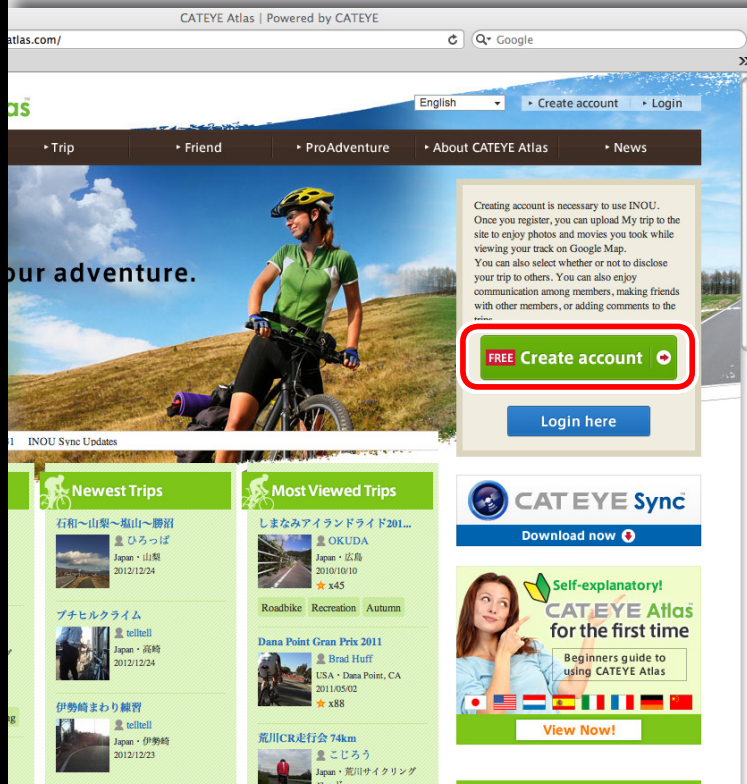
# CATEYE STEALTH 10 Quick Start Manual

## Setup of your PC

Membership  
registration to  
CATEYE Atlas™(1/3)

Installing  
CATEYE Sync™

Setting  
CATEYE Sync™



### Membership registration to CATEYE Atlas™(1/3)

Start the browser to access to CATEYE Atlas™

- When you do not have an account:

Click on 

- When you have an account:

Membership registration is not required. Go to the next step “Installing CATEYE Sync™”.

- \* You can use the same account when using CATEYE INOU and having registered membership.



# CATEYE STEALTH 10 Quick Start Manual

## Setup of your PC

Membership  
registration to  
CATEYE Atlas™(2/3)

Installing  
CATEYE Sync™

Setting  
CATEYE Sync™

## Membership registration to CATEYE Atlas™ (2/3)

- 1 Confirm the Terms of Service, and then click on

Go to confirmation screen

- 2 Enter your e-mail address, and then click on **[Submit]**.

E-mail address

Submit

- 3 Open the e-mail arrived, and then click on the URL to enter the registration form.

Access the following URL, and proceed to the membership registration.

[https://www.cateyeatlas.com/regist/entry?crypt\\_key=22487c4444cefe78fe25217bade717f3](https://www.cateyeatlas.com/regist/entry?crypt_key=22487c4444cefe78fe25217bade717f3)

Terms of service

1 Confirming the Terms of Service

Article 1 (Purpose)  
1. These Terms and Conditions for Use of CATEYE Atlas (hereinafter referred to merely as "these Terms") shall apply to CATEYE CO., LTD. (hereinafter referred to as "the Company") and you as the user of CATEYE Atlas (hereinafter referred to merely as "the User") in connection with the use of CATEYE Atlas.

Interim membership registration

Send E-mail address → Issue registration form URL → Registration Form → Confirm → Completed

Enter your e-mail address.  
The registration form URL will be sent to the e-mail address entered.

2 Entering your e-mail address

E-mail address  Submit

no email confirmation is received. A login attempt will be reported after submitting from various sites from our accounts.  
Try with different e-mail address. If an account if no email confirmation has been received.

3 E-mail arrived from CATEYE Atlas™

Welcome to CATEYE Atlas — Inbox

From: CATEYEAtlas <info@cateyeatlas.com>  
Subject: Welcome to CATEYE Atlas  
Date: 2012年12月24日 16:25:46JST  
To: [redacted]

Welcome to CATEYE Atlas

This is CATEYE Atlas e-mail address.  
Access the following URL, and proceed to the membership registration.  
[https://www.cateyeatlas.com/regist/entry?crypt\\_key=22487c4444cefe78fe25217bade717f3](https://www.cateyeatlas.com/regist/entry?crypt_key=22487c4444cefe78fe25217bade717f3)  
This URL will be expired after 24 hours.

\* When you have no idea about this E-mail, your E-mail address may have been entered by mistake. Please delete this E-mail.  
\* You cannot reply to this E-mail.



# CATEYE STEALTH 10

## Quick Start Manual

## Setup of your PC

Membership  
registration to  
CATEYE Atlas™(3/3)

Installing  
CATEYE Sync™

Setting  
CATEYE Sync™

### Membership registration to CATEYE Atlas™ (3/3)

- 4 Enter the required information, and then click on

**Go to confirmation screen**

\* Be sure to enter the required items.

- 5 Confirm the registration, and then click on

**Create my account**

Now, your membership registration is completed.

After your membership registration is completed, go to the next step “Installing CATEYE Sync™”.

#### Terms of service

Send E-mail address > Issue registration form URL > **Registration Form** > Confirm > Completed

- 4 Enter the required information, and then click on “Go to confirmation screen.”

4 Entering the registration form

Screen name	Required	<input type="text"/>	* Up to 100 characters
E-mail address	Required	<input type="text"/>	
Password	Required	<input type="password"/>	* 4 to 16 one-byte alphanumeric characters
Profile image	Optional	<input type="button" value="Choose File"/>	no file selected
Gender	Required	<input type="radio"/> Male <input type="radio"/> Female	
Privacy setting		<input type="button" value="Public"/>	

#### Registration form

Send E-mail address > Issue registration form URL > **5 Confirming the registration** > Completed

Confirm that the following information is correct. If correct, press the “Create my account” button. Otherwise, press the “Back” button to change.

Screen name	Required	<input type="text"/>	
E-mail address	Required	<input type="text"/>	
Password	Required	<input type="password"/>	



# CATEYE STEALTH 10 Quick Start Manual

## Setup of your PC

Membership  
registration to  
CATEYE Atlas™

Installing  
CATEYE Sync™  
(1/2)

Setting  
CATEYE Sync™

The screenshot shows the CATEYE Atlas website interface. At the top, there's a navigation bar with 'English', 'Create account', and 'Login' options. Below that, a large banner image of a cyclist is displayed. A registration prompt box is overlaid on the right side of the banner, containing the text: 'Creating account is necessary to use INOU. Once you register, you can upload My trip to the site to enjoy photos and movies you took while viewing your track on Google Map. You can also select whether or not to disclose your trip to others. You can also enjoy communication among members, making friends with other members, or adding comments to the trips.' Below this text are two buttons: 'FREE Create account' and 'Login here'. Below the banner, there are two columns of trip listings under 'Newest Trips' and 'Most Viewed Trips'. A 'CATEYE Sync' download button is highlighted with a red box. At the bottom, there's a 'Self-explanatory! CATEYE Atlas for the first time' banner with a 'View Now!' button.

## Installing CATEYE Sync™ (1/2)

- 1 Click on the banner of CATEYE Sync™ from the top page of CATEYE Atlas™.



The download page will open.



# CATEYE STEALTH 10 Quick Start Manual

## Setup of your PC

Membership  
registration to  
CATEYE Atlas™

Installing  
CATEYE Sync™  
(2/2)

Setting  
CATEYE Sync™

CATEYE Atlas | Powered by CATEYE

om/app/

Q Google

CATEYE Sync

load

SD card

site to enjoy photos and movies you took while viewing your track on Google Map. You can also select whether or not to disclose your trip to others. You can also enjoy communication among members, making friends with other members, or adding comments to the trips.

FREE Create account

Login here

CAT EYE Sync

Download now

Self-explanatory!  
CATEYE Atlas  
for the first time

Beginners guide to using CATEYE Atlas

View Now!

everyone Check Tweets!

2 Download for Windows version

for Windows Download

for Mac Download

2 Download for Mac version

## Installing CATEYE Sync™ (2/2)

- 2 Click the **[Download]** button for Windows version or Mac version according to your PC (OS).



CATEYE Sync™ will start being downloaded.

- 3 Double-click on the execution file downloaded. Install CATEYE Sync™ according to the instruction displayed on the screen. After CATEYE Sync™ is installed, go to the next step “Setting CATEYE Sync™”.



# CATEYE STEALTH 10 Quick Start Manual

## Setup of your PC

Membership  
registration to  
CATEYE Atlas™

Installing  
CATEYE Sync™

Setting  
CATEYE Sync™  
(1/2)

## Setting CATEYE Sync™(1/2)



1 CATEYE Sync™ icon

1 Start CATEYE Sync™.

Double-click the shortcut [**CATEYE Sync™**] to start CATEYE Sync™.



2 Starting CATEYE Sync™

2 Click on [**Q series / STEALTH**] .

The menu screen appears.





# CATEYE STEALTH 10 Quick Start Manual

## Setup of your PC

Membership  
registration to  
CATEYE Atlas™

Installing  
CATEYE Sync™

Setting  
CATEYE Sync™  
(2/2)

### Setting CATEYE Sync™(2/2)

- 3 Click on **[Settings]**.

The setting screen appears.

- 4 Click on **[Login setting]** and enter your e-mail address and password.

Enter correctly the registered e-mail address and password.

- 5 Click on **[Setting]**.

Login setting of CATEYE Sync™ is completed.

Now, setup of the computer is completed.

Return to the contents of CATEYE Sync™/Atlas™ and see “Uploading, editing and sharing the trip” and “Changing the computer configuration”.

3 Click on **[Setting]**

4 Enter your e-mail address and password

5 Setting completed

share your adventure.  
**CATEYE Atlas**

**CATEYE**  
©CATEYE CO.,LTD. ALL RIGHTS RESERVED.



# CATEYE STEALTH 10

## Quick Start Manual

### Uploading the trip

\* The site screen in the video is showing a trip recorded with the Stealth 50 for an example.

## Uploading the trip

Click on the screen to play the movie.



# CATEYE STEALTH 10

## Quick Start Manual

### Editing and sharing the trip

\* The site screen in the video is showing a trip recorded with the Stealth 50 for an example.

## Editing and sharing the trip

Click on the screen to play the movie.



# CATEYE STEALTH 10

## Quick Start Manual

Changing the computer configuration

### Changing the computer configuration

Click on the screen to play the movie.