



CATEYE

VELO WIRELESS +

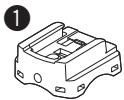
CYCLOCOMPUTER CC-VT210W

Owner's Manual

U.S. Pat. Nos. 5236759/5308419/6957926 Pat./Design Pat. Pending
 Copyright© 2011 CATEYE Co., Ltd.
 CCVT21W-110930 066600910 3



INSTALL



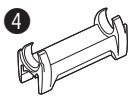
Support



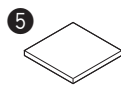
Capteur



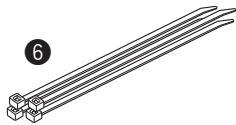
Aimant



Cale en caoutchouc du capteur

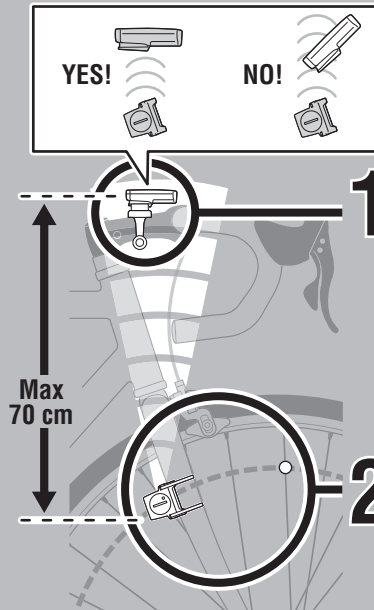


Bande adhésive, double-face



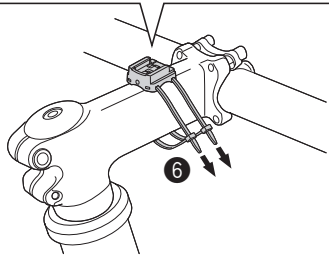
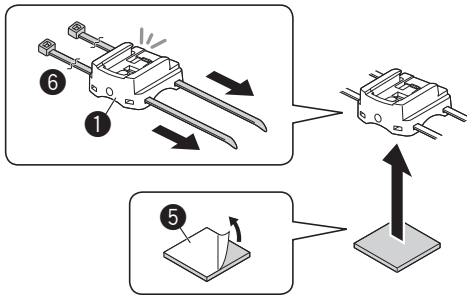
Attaches en nylon (x4)

A

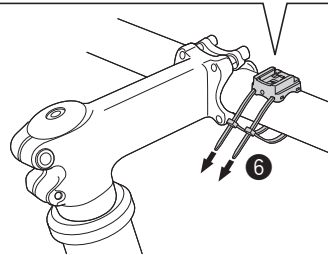
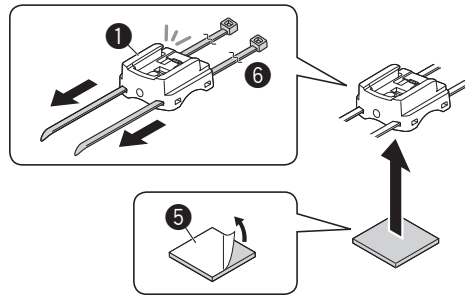


1 Bracket

[Stem]

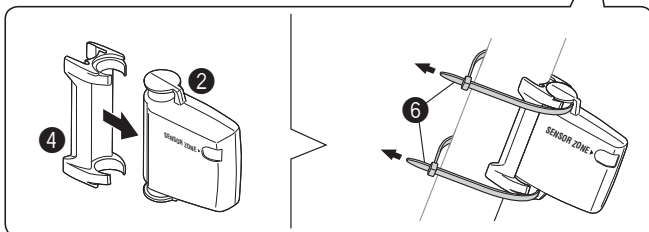
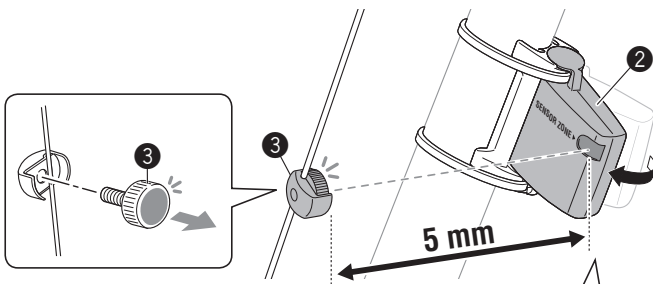


[Handlebar]

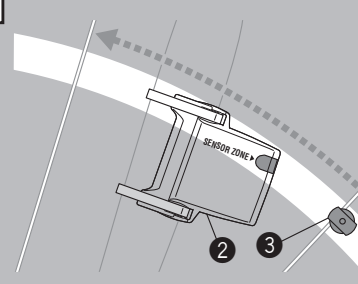


or

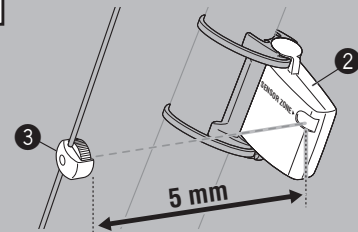
2 Sensor/Magnet



B



C

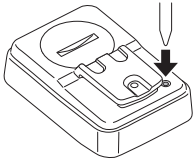


FR

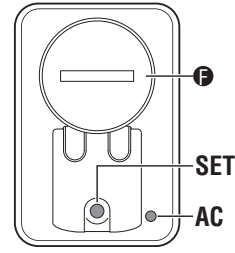
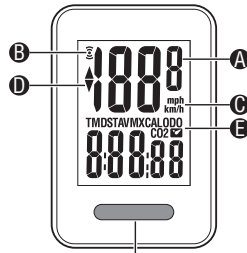
CC-VT210W VELO WIRELESS +

SETTING

1 | All Clear



TM = 0
 DST = 0
 AV = 0
 MX = 0
 CAL = 0
 CO2 = 0
 ODO = 0
 = 0



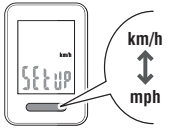
MODE

- A Vitesse actuelle
- B Icône de réception de signal du capteur
- C Unité de vitesse km/h mph
- D Flèche d'allure ▲▼

- E Mode sélectionné
 - F Couvercle du compartiment de la pile
- * Se référer à "Noms des éléments" pour plus de détails.

2 | Select km/h or mph

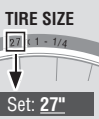
Set: km/h



Register the setting SET

3 | Tire Size

[Quick setting size]



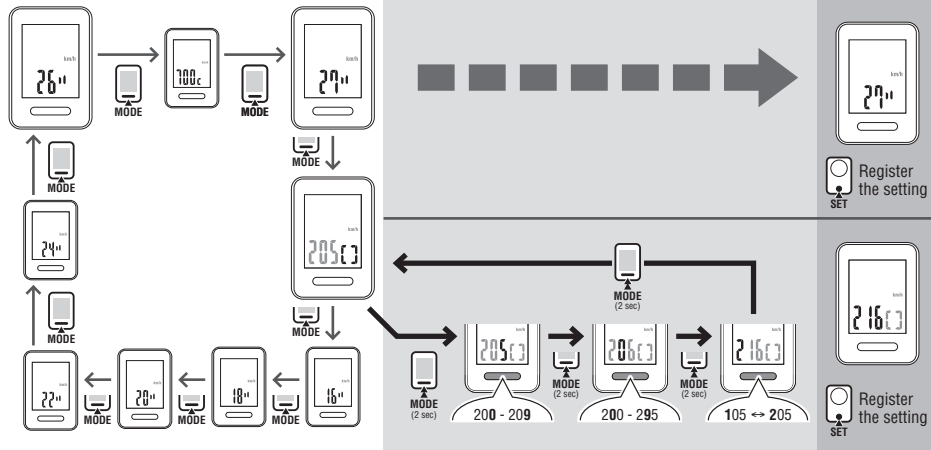
Set: 27"

or

[Detailed setting size]

| ETRTO | Tire size | L (cm) |
|--------|-----------|--------|
| 28-630 | 27x1-1/8 | 216 |
| 32-630 | 27x1-1/4 | 216 |
| 37-630 | 27x1-3/8 | 217 |
| 18-622 | 700x18C | 207 |

Set: 216

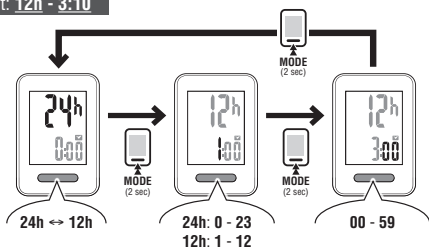


Register the setting SET

Register the setting SET

4 | Clock Setting

Set: 12h - 3:10

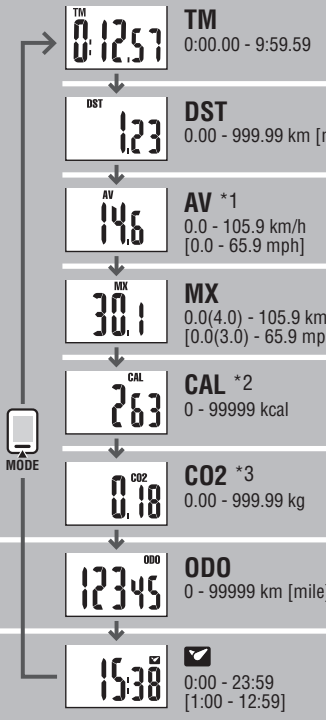


Register the setting (Finish) SET

OPERATION FLOW

Current Speed

0.0(4.0) - 105.9 km/h
 [0.0(3.0) - 65.9 mph]



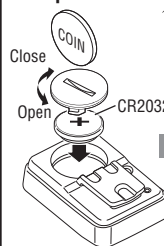
Data Reset



TM = 0
 DST = 0
 AV = 0
 MX = 0
 CAL = 0
 CO2 = 0

Battery

Computer



SETTING
 1.All clear

Sensor

