



RECHARGEABLE HEADLIGHT

ENG

VOLT300™

HL-EL460RC
Manual



Before using the light, please read this manual and the attached "Lithium-ion Batteries" thoroughly, and keep them for future reference.

Design Pat. Pending
Copyright© 2013 CATEYE Co., Ltd.
EL460RC-130612 4



⚠ CAUTION!

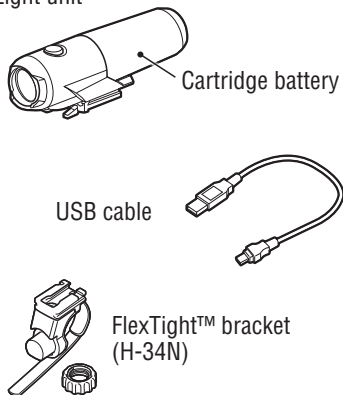
- Before your trip, please make sure the light is firmly mounted to the bracket and it lights up.
- Do not place it within children's reach.
- In preparation for unexpected battery shutoff, we recommend you carry a spare cartridge battery and light.
- Mounting the light unit too close to a wireless computer may adversely affect the reading of the computer.
- This product is water-resistant under normal daily use and can be used in the rain. However, do not intentionally submerge it in water.

- If the light unit or parts become dirty with mud, etc., clean with a soft cloth which is moistened with mild soap. Never apply paint thinner, benzene or alcohol; damage will result.
- Dispose of used cartridge batteries appropriately according to local regulations.

ⓘ Before Initial Use

This unit is shipped with a small charge to check the light. Be sure to charge it before use, according to the instructions "HOW TO CHARGE".

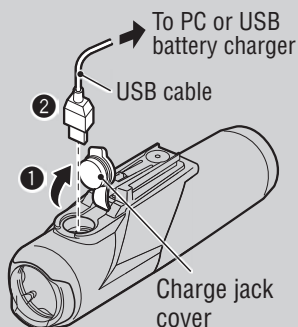
Light unit



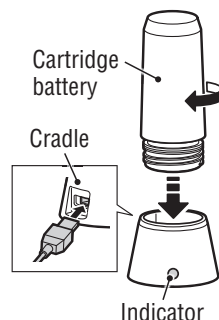
1 HOW TO CHARGE

Standard charging time

Approx. 6 h (USB 2.0)



Charging on the cradle



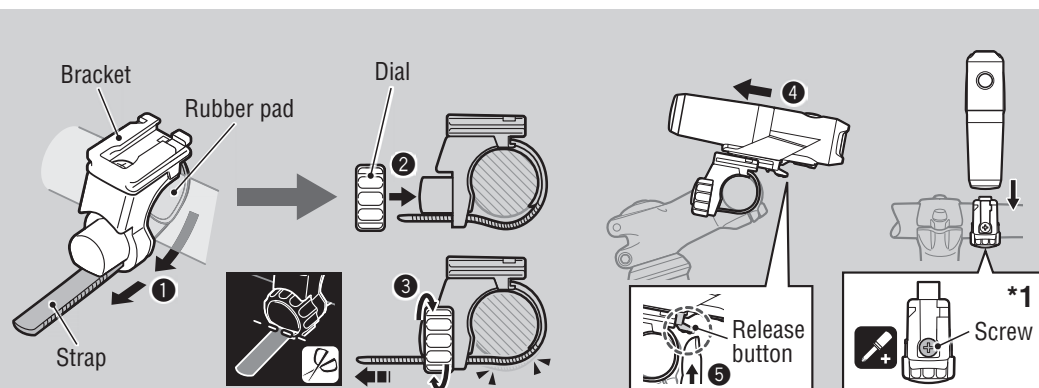
1. Connect the light unit to your PC or a commercial USB battery charger using the USB cable. (Fig 1 ① - ②) The switch or the indicator on the cradle lights up, and charging starts.

Indicator light: On	Charging
Indicator light: Off	Charging is completed

 - * When your PC is in sleep state, the unit cannot be charged.
 - * We recommend using 500+mA (USB2.0) USB battery charger.
2. After charging is completed, remove the USB cable, and install the charge jack cover.

- * Charging and lighting times are approximate values, and will vary by environmental and user conditions.
- * The cartridge battery can be fast-charged by using the optional charging cradle (about 3 hours of charging time). Use a 1A or higher USB charging adapter when charging by the cradle.

2 HOW TO MOUNT



1. Mount the bracket to the handlebar. (Fig 2 ① - ③)
 2. Insert the light unit into the bracket until it clicks, and adjust the beam angle. (④)
 3. To remove the light unit, pull out it forward while pressing down on the release button (⑤).
- * To re-adjust the beam angle, loosen the dial enough to move the bracket, and firmly tighten it after adjustment.
 - * The light can be mounted under the handlebar.

CAUTION!:

- Be sure to tighten the dial by hand. When you tighten it too hard with a tool, the screw thread may be stripped.
- Check the dial and screw (*1) on the bracket periodically, and use them without any loosening.
- Round off the cut edge of the bracket strap to prevent injury.

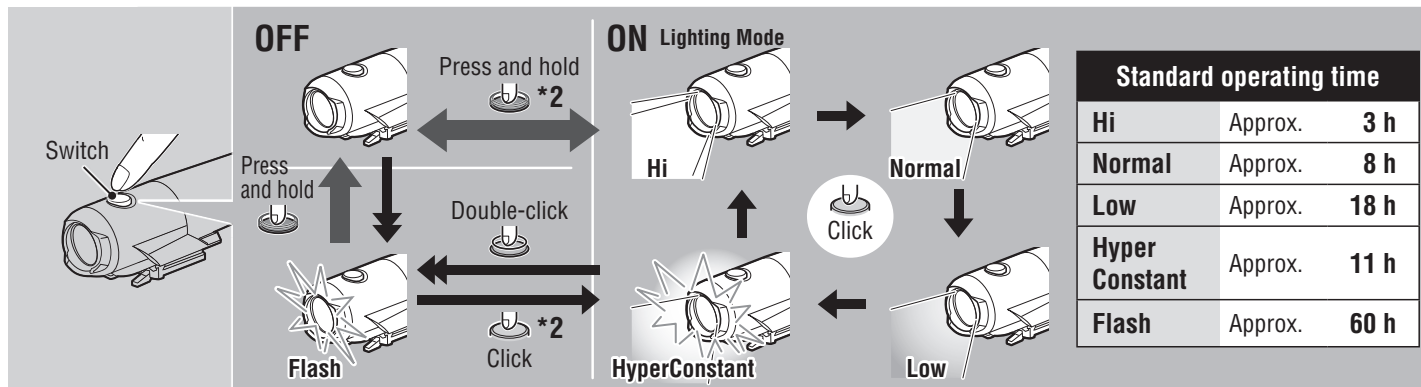
3 SWITCH OPERATION (SWITCHING THE LIGHTING MODE)

The ON/OFF and lighting modes are selected using a switch.

*2 When you turn the light on, it lights up in the last lighting mode you used. (Mode memory function)

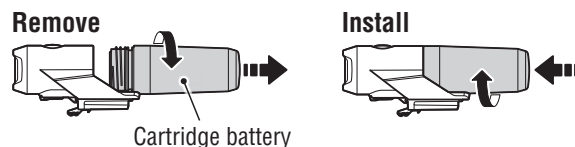
Remaining battery capacity

When the switch (indicator) lights up, the remaining battery power is 20% or less. Please charge as soon as possible.



4 HOW TO REPLACE THE CARTRIDGE BATTERY

Turn the cartridge battery counterclockwise to remove from the unit. To install, screw the cartridge battery into the light unit until it clicks.



CAUTION!:

- When the operating time decreases significantly, the battery life is close to an end. Replace the cartridge battery with a new one.
- When you store the cartridge battery alone, be sure to install the cap. Otherwise, damage or a fire may be caused by short circuit.

SPECIFICATIONS

Light source	High-intensity white LED x 1
Cartridge battery	Li-ion 3.6v 2200 mAh
Charge	Micro USB plug
Operating time	Hi : Approx. 3 hours
	Normal : Approx. 8 hours
	Low : Approx. 18 hours
	HyperConstant : Approx. 11 hours
	Flash : Approx. 60 hours
*Average runtime at 20°C.	
Standard charging time	Approx. 6 hours (USB2.0)
Temperature range	Charging : 41°F – 104°F (5°C – 40°C)
	Operating : 14°F – 104°F (-10°C – 40°C)
Recharge/discharge number of times	About 300 times (until the rated capacity drops to 70%)
Dimensions/weight	4-25/64" x 1-7/32" x 1-1/2" (111.5 x 31 x 38 mm) / 4.2 oz (120 g) (Including the cartridge battery)

*The specifications and design are subject to change without notice.

LIMITED WARRANTY

2-year Warranty: Light unit only
(Deterioration of the cartridge battery is out of warranty)

CatEye products are warranted to be free of defects from materials and workmanship for a period of 2 years from original purchase. If the product fails to work during normal use, CatEye will repair or replace the defect at no charge. Service must be performed by CatEye or an authorized retailer. To return the product, pack it carefully and enclose the warranty certificate (proof of purchase) with instruction for repair. Please write or type your name and address clearly on the warranty certificate. Insurance, handling and transportation charges to CatEye shall be borne by person desiring service. For UK and REPUBLIC OF IRELAND consumers, please return to the place of purchase. This does not affect your statutory rights.

Please register your CatEye product on the website.
<http://www.cateye.com/en/support/regist/>

CATEYE CO., LTD.

2-8-25, Kuwazu, Higashi Sumiyoshi-ku,
Osaka 546-0041 Japan
Attn: CATEYE Customer Service Section
Phone: (06)6719-6863
Fax: (06)6719-6033
E-mail: support@cateye.co.jp
URL: <http://www.cateye.com>

[For US Customers]

CATEYE AMERICA, INC.
2825 Wilderness Place Suite 1200,
Boulder CO80301-5494 USA
Phone: 303.443.4595
Toll Free: 800.5CATEYE
Fax: 303.473.0006
E-mail: service@cateye.com

SPARE/OPTIONAL PARTS

5338827N

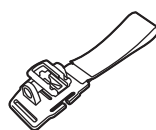
FlexTight™ bracket



(H-34N)

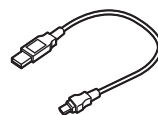
5341831N

Helmet mount



5342730

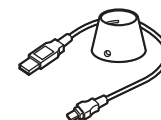
USB cable



(Micro USB)

5342720

Fast charging cradle
(USB cable attached)



(CRA-001)

Cartridge battery

(Li-ion3.6v 2200mAh : BA-2.2)

5342710 Black

5342711 White

5342712 Silver

